



**MONDO**

[WWW.MONDOUSA.COM](http://WWW.MONDOUSA.COM)

email address:  
mondo@mondousa.com



**Mondo America Inc.**  
2655 Francis Hughes  
Laval QC, Canada H7L 3S8  
Tel.: 450 967 5800  
Fax: 450 663 7927  
1 800 663 8138

**Mondo U.S.A. Inc.**  
1 800 361 3747

Northwest  
Washington

Southwest  
Texas

Southeast  
South Carolina

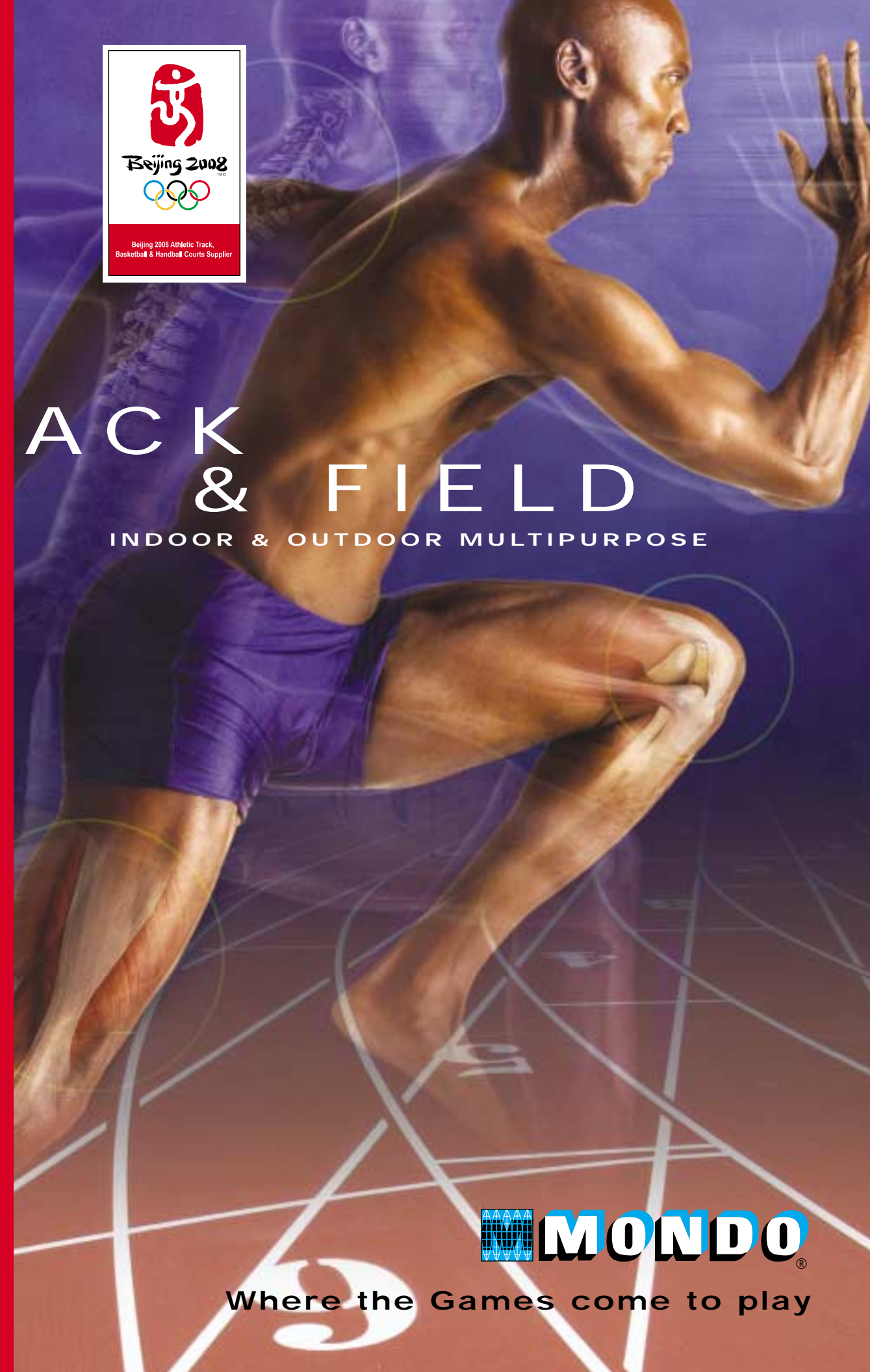
Northeast  
Pennsylvania

PRINTED IN CANADA - APRIL 2008



# TRACK & FIELD

INDOOR & OUTDOOR MULTIPURPOSE



**MONDO**

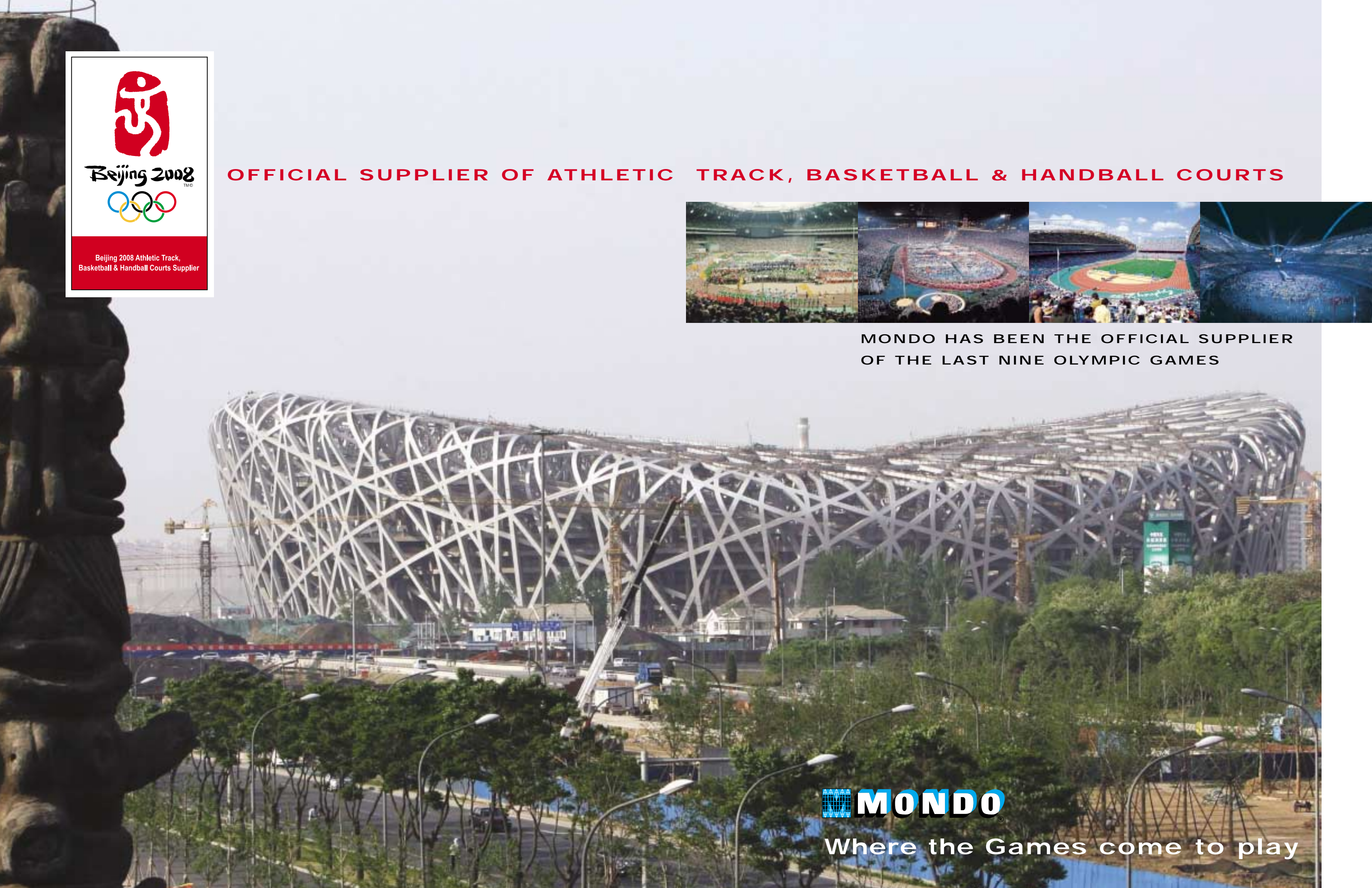
Where the Games come to play



**OFFICIAL SUPPLIER OF ATHLETIC TRACK, BASKETBALL & HANDBALL COURTS**



**MONDO HAS BEEN THE OFFICIAL SUPPLIER OF THE LAST NINE OLYMPIC GAMES**



**Where the Games come to play**

## RESEARCH

In 1980 Mondo's research laboratory began collaborating with the world's top biomechanical research laboratories to develop its next generation track system. Among those laboratories are: University of Zurich • University of Rome • Harvard University • Institute of Biomechanics of Valencia (IBV) • Human Performance Laboratory of Calgary (HPL)

In 2007 a new research, conducted by Mondo's engineers team with researchers from Pavia University, led to a completely innovative approach to engineer the latest Track & Field surface with a new texture and a high-performance hexagonal backing layer.

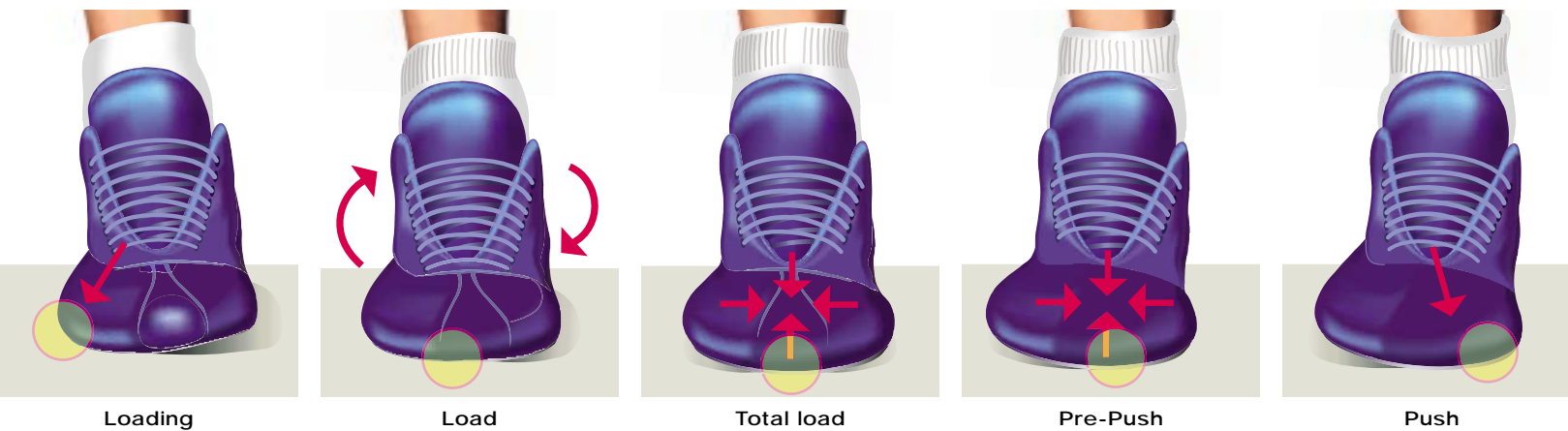
# RESEARCH &

### GOAL

Improve Athletic Performance • Comfort & Safety  
Goals that traditionally have worked against each other. The higher degree of comfort experienced on a track typically equated to a reduction in athletic performance. Mondo wanted to achieve improvement in both.

### ROLLING OF THE FOOT

Rolling of the foot between the 5<sup>th</sup> metatarsus (outside portion of the foot) and the 1<sup>st</sup> metatarsus (inside portion of the foot) takes a nominal but measurable amount of time to perform.



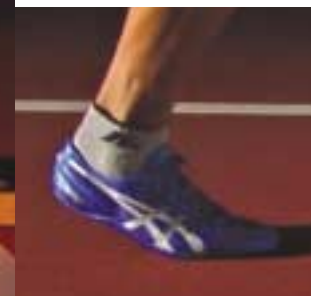
Our research enabled us to develop a track & field system that will reduce this time interval (make it faster) while supporting the foot movement.

We believe that a reduction of the single intervals of the motor execution would result in faster race times.

# DEVELOPMENT

### FORCES AT PLAY

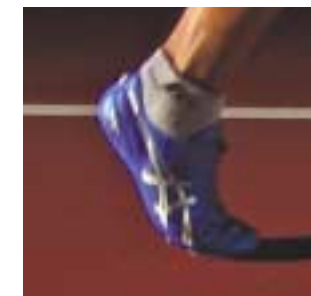
Observing the athlete from a lateral perspective shows that during running the foot loads itself without the heel touching the ground.



Step 1



Step 2



Step 3

During this biomechanical movement, the track can play an important role, both from a protective standpoint by maintaining the physical integrity of the athlete, and from a performance standpoint by allowing the maximum amount of force to be transformed into energy for running movements.

### RESEARCH PROTOCOL

Gathering the information.



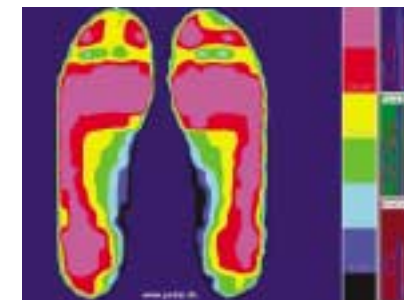
Protocol 1 • OptoJump

Optical instruments imbedded into two bars at both sides of a running lane measure contact time and flight time providing detailed analysis of an athlete's performance.



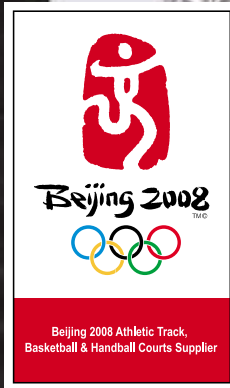
Protocol 2 • Rolling of the foot

Accelerometers at the ankles and in-shoe insoles with sensors under the 1st and 5th metatarsus measure flight time, contact time, frequency of contacts and rolling time between the 5<sup>th</sup> and the 1<sup>st</sup> metatarsus.



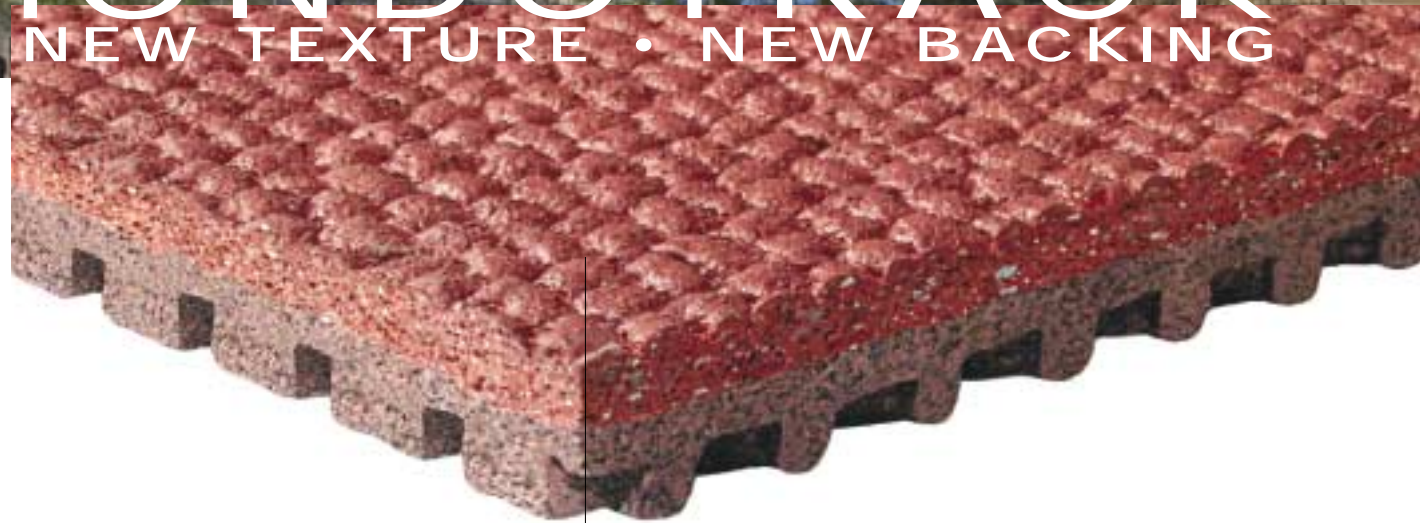
Protocol 3 • Novell Pedar insoles

In-shoe insoles with sensors spaced across the planar foot monitor pressure distribution, local loads between the foot and the shoe, and, allow the evaluation of the area of contact of the foot.



# MONDOTRACK

NEW TEXTURE • NEW BACKING



## NEW TEXTURE

Mondo's new surface embossing results from careful analyses of numerous patterns including biomimicry (patterns occurring in nature), geometric and technological. The new MondoTrack texture and tessellation pattern (no overlapping shapes or gaps) is the best solution for functionality, performance and comfort.

### Optimal traction and greater contact area

The irregular size and shape of the tessellation pattern has been designed to provide the best traction between the track and shoe spikes and for a greater contact area than other track systems. This improves athletes' grip and performance.

### Easy to clean

### Greater water flow efficiency in rainy conditions

Ensures optimal traction in all weather conditions for excellent athletic performance and maximum safety.

### Harmonious aesthetic design

The irregular tessellation design provides more harmonious aesthetics than recurring or systematic patterns, which can have dissonant or jarring effects.

## MONDOTRACK SX

TRAINING AND COMPETITION TRACK



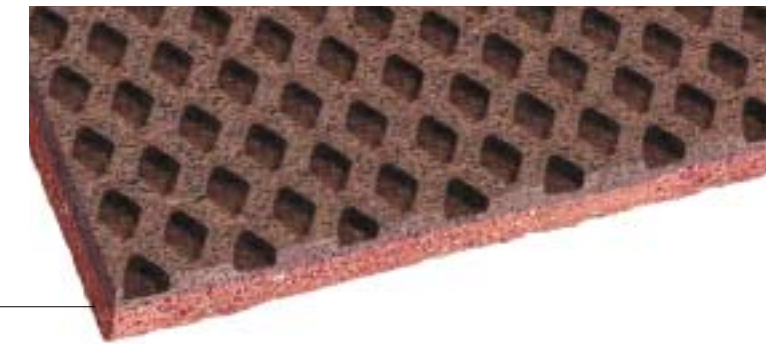
## NEW HEXAGON BACKING

The directional compression of the honeycomb backing makes the track more elastic and responsive, improving the athlete's performance. The elongated honeycomb is structurally strong and provides improved lateral support and, therefore, better control during the rolling movement of the foot.

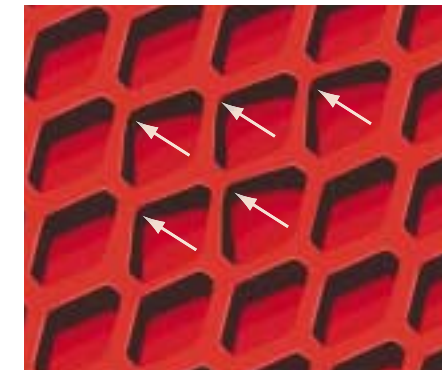
## MONDOTRACK FTX

PREMIUM CUSTOM MADE TRACK

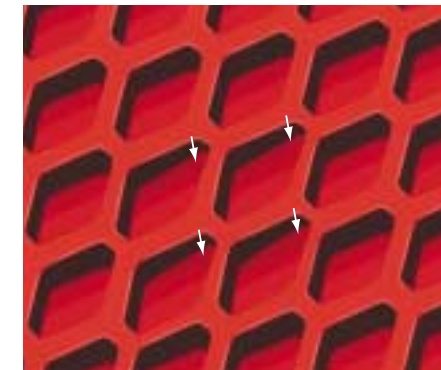
Same construction as Mondotrack SX with a special formula backing that's the same color as the surface.



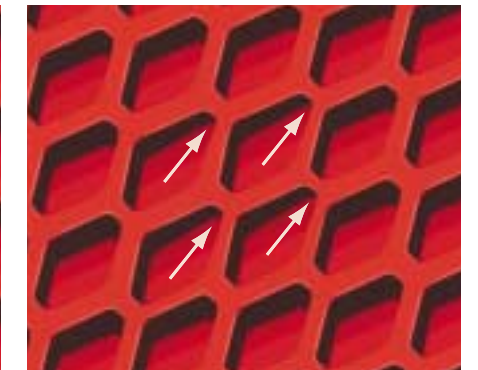
## DEFORMING GEOMETRIES



Lateral response = Control



Vertical compression = Comfort



Running direction response = Performance

## PERFORMANCE

While running, athletes exert a force equal to two to four times their weight on the 5<sup>th</sup> metatarsus. During each step, the force gained and not dissipated transitions from the 5<sup>th</sup> metatarsus to the 1<sup>st</sup> metatarsus faster with the new MondoTrack than with existing track products. This helps support the effort of the lower leg muscles, increasing athletes' comfort and enabling runners to achieve faster times.

## SUMMARY

Its newly designed texture, backing geometry and formulation have improved:

### SAFETY AND COMFORT

- Greater shock absorption
- Greater vertical deformation
- Lower pressure on the foot

### ATHLETIC PERFORMANCE

- Greater contact area
- Better lateral support of the foot
- Higher energy return

All of which has increased the speed of the rolling movement of the foot between the 5<sup>th</sup> and 1<sup>st</sup> metatarsus, athletes' flight time and length of step leading to increased performance. We believe that these improvements can translate into faster race times.

# MONDOTRACK FTX



## ARIZONA STATE UNIVERSITY

"We are excited they are putting in the new Mondo surface that will be in Beijing. We were able to do some things with the infield configuration to take advantage of the prevailing winds in the discus throw. We take great pride in having a balanced program. We are extremely strong in the throwing events, and this surface will give our athletes the chance to obtain marks that meet the "A" standard for the Olympic Games. We look forward to giving our student-athletes one of the top facilities in the nation for training and competitions."

*Greg Kraft  
Head Track and Field Coach*

"I think this is an absolutely exciting moment for the ASU track and field program. As our program continues to advance, this is a major step in establishing Arizona State as one of the premier programs in the nation. We will be able to continue the rich history and tradition of Sun Devil track and field because of the addition of such a quality competition surface from Mondo."

*Don Bocchi  
Senior Associate Athletic Director*



# WOMEN'S 1500M 3:57.71 WR

## PALAU VELÓDROMO LUIS PUIG

12<sup>TH</sup> IAAF WORLD INDOOR CHAMPIONSHIPS  
VALENCIA 2008

WOMEN'S 1500M - FINAL:  
**YELENA SOBOLEVA**  
3:57.71 WORLD RECORD

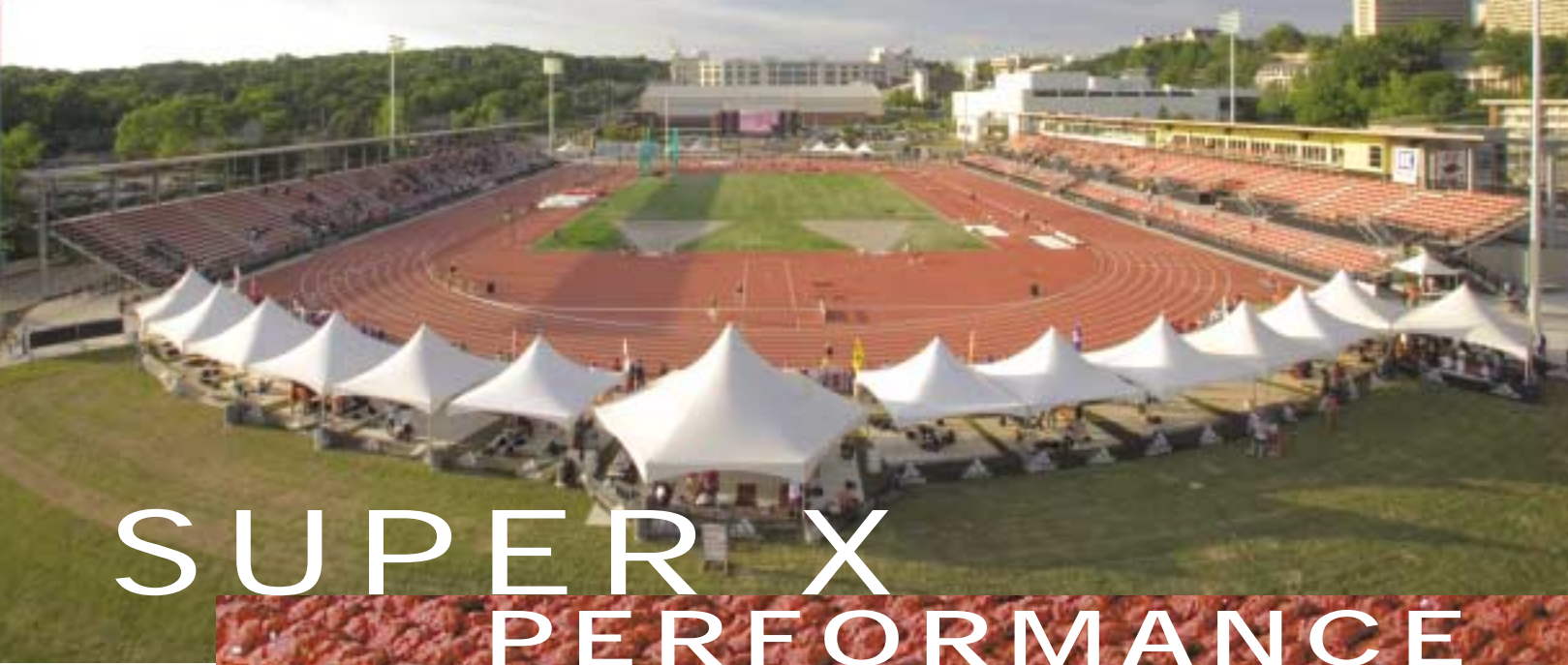
7 CONTINENTAL RECORDS

9 NATIONAL RECORDS

12 PERSONAL BESTS

22 SEASON BESTS





# SUPER X PERFORMANCE



## EMBOSSED TEXTURED FINISH

- No coating or granules
- Extremely maintenance friendly  
On a regular basis, normal rainfall carries away the surface dirt
- No resurfacing is required  
No top coating to wear through or granules to wear off
- Performs in all conditions
- Channels water away
- Provides great traction in wet conditions
- UV stable

## MOLDED AND VULCANIZED TOP LAYER

Vulcanizing natural rubber makes a strong material even stronger. Mondo's vulcanized track surface provides maximum elasticity and unparalleled durability. Surface deterioration is minimal throughout the long life of the track.

## Technically superior construction

Firm, non-slip surface with enough cushion to allow the foot to move as it needs. The consistent, factory embossed surface texture provides a great usable surface contact area.

## GEOMETRICALLY MOLDED AND VULCANIZED BOTTOM LAYER



Home to the most successful program in NCAA history, John McDonnell Field has been transformed into one of the top outdoor track and field facilities in the nation. Named for legendary head coach John McDonnell, the winner of 42 NCAA national championships, the facility is the first IAAF Class I certified track on a collegiate campus.

The state-of-the-art competition areas include a nine-lane Mondo track, a grass infield as well as a full hammer cage and multiple throw areas. The pole vault and jumping pits are reversible and contain two sets of runways to accommodate multiple events. Stadium capacity currently is 7,000, but it could reach 10,000 with additional construction.



## JOHN MC DONNELL FIELD UNIVERSITY OF ARKANSAS

Radius	36.5 m (119.72')
Lane width	1.22 m (4')
Coefficient of friction	.85
Force reduction	39 %
Vertical deformation	1.45 mm

"The state-of-the-art outdoor track complex was constructed in record time and has provided us with an excellent outdoor venue. The Mondo track has given us a comfortable for athletic training. The surface is very consistent and we have had no injuries due to the surface. This track, like our indoor track, has also proven to be a very fast track. It is great to have a track that serves for both training and competition."

*John McDonnell  
Head Track and Field Coach*



**GEORGIA TECH**

"Prior to the 1996 Olympic Games (Georgia Tech was the site of the Olympic Village), we were allowed to choose any surface we desired for the Griffin Track. After much debate, we decided to go with a Mondo surface. Mondo was our choice. **We have had minimal foot and lower leg issues since its installation in 1996.** I do not believe there is a better training/competition surface in the world today."

*Grover Hinsdale  
Head Men's Track & Field Coach*

UNIVERSITY OF FLORIDA

GEORGIA TECH

**UNIVERSITY OF FLORIDA**

"After extensive research on the many surfaces available, I came to the conclusion that Mondo was the best surface for our men's track & field program.

The majority of our teams' time is spent training on the track with sprints being a major portion of our program. I felt we needed a surface that would be ideal for constant training and that would hold up over time to all uses: from athletics, students and local youth clubs. The new Mondo surface has been better than I thought possible! **Training was a major concern in selecting a surface, and we have not had to adjust our training regimen in any way, nor have we had any injuries that can be related to the track.** Our athletes love training on the surface. I am also excited about hosting competitions as I expect that we will see many great performances on this surface"

*Michael D. Holloway  
Head Men's Track & Field Coach*

**DRAKE UNIVERSITY**

"When it came to making a decision about which surface we were going to have installed in Drake Stadium, we considered many factors.

Performance, consistency, customer service and company history were a few of the factors that were evaluated. **Mondo was clearly the right choice for the Home of the Drake Relays as many records have fallen since installation.**"

*Mark Kostek  
Associate Athletics Director*

DRAKE UNIVERSITY



BRIGHAM YOUNG UNIVERSITY



CALSTATE UNIVERSITY • SACRAMENTO



UNIVERSITY OF MISSISSIPPI



# FIELDHOUSES



## BIOMECHANICAL PROPERTIES

By being able to fine tune the manufacturing process, Mondo is able to meet your facilities' specific needs.

- Coefficient of friction
- Shock absorption
- Energy return

## VERSATILITY

Excellent multifunctional surface for:

Recreational and varsity athletics

- Tennis • Basketball
- Volleyball • Lacrosse
- Baseball • Soccer

Public activities

- Tradeshows • Social events
- Concerts

## DURABILITY

More than 20-year life expectancy

Low life-cycle costs

No coatings to apply

Stain resistant

Easy to repair

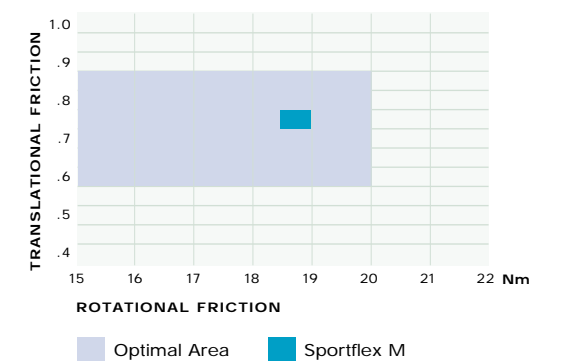
Anti-bacterial and anti-microbial

Withstands tables, chairs and large bleachers

## SPORTFLEX M



## FRICTION CHARACTERISTICS



Mondo's indoor track systems are another example of our commitment to R&D and state-of-the-art engineering. Years of research, testing and installation experience have determined optimum banking and construction techniques for almost any indoor configuration.

Features include:

- Perfectly uniform surface and performance in all lanes
- Controlled deflection when running
- Correct banking on turns
- Used in the most important international competitions to help set countless world records
- Color application and line marking executed by Mondo's expert technicians in accordance with IAAF standards

# SPECIALTY TRACKS

## PERMANENT BANKED TRACK

Custom designed tracks to suit both the customer's building and budget

- Portable or permanent field event areas and equipment

## BANKED PORTABLE TRACK

- Standard 200 meter 6 lane demountable indoor track, or custom design
- Includes safety zones on the inside edge and protection barriers on the curves
- Portable field event areas and equipment
- Modular frame made of galvanized steel trusses
- Unique locking feature allows easy assembly & dismantle
- Sized and packaged to reduce storage space



VIRGINIA TECH



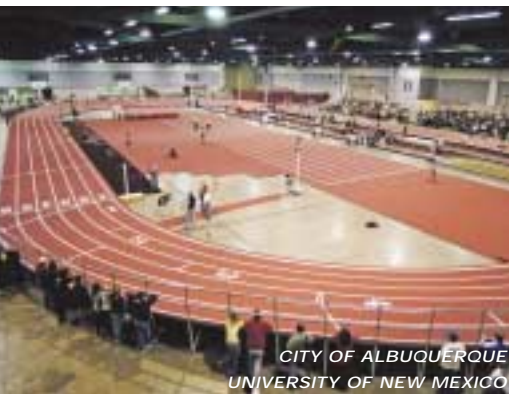
REGGIE LEWIS CENTER



UNIVERSITY OF ARKANSAS



NEW YORK ARMORY



CITY OF ALBUQUERQUE  
UNIVERSITY OF NEW MEXICO



MADISON SQUARE GARDEN

## HYDRAULIC BANKED TRACK

- Standard 200 meter 6 lane indoor track, or custom design
- 3 positions: flat, intermediate and fully raised
- Goes from flat to fully banked in only 3 minutes
- When flat, the full area of the sport floor can be used for other sports or activities
- Steel frame and beams
- Double acting hydraulic cylinders fitted to each beam for super quiet automatic banking
- Portable or permanent field event areas and equipment



PENN STATE UNIVERSITY

# LONGEVITY

BEST RETURN ON INVESTMENT

## UNIVERSITÉ DE SHERBROOKE: since 1977

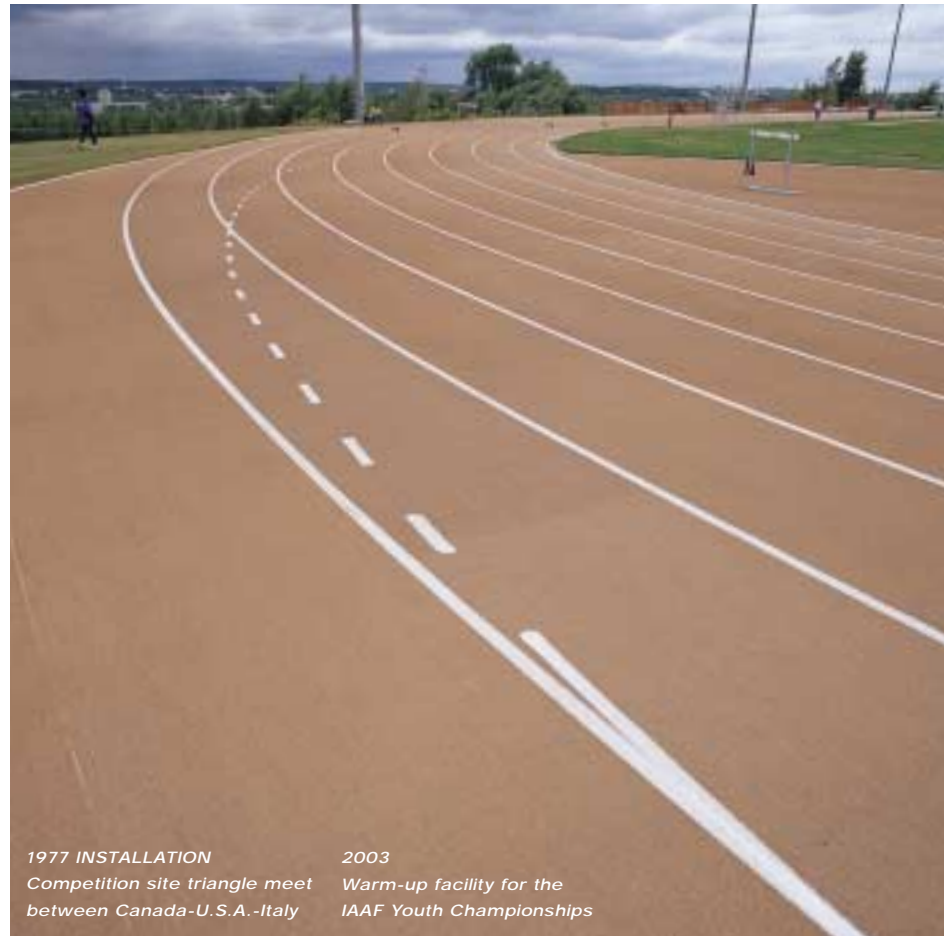
"For many years, our track has been heavily used. Sherbrooke is in Canada so its track surface is exposed to extremely cold conditions, -31°F with high winds. Despite these conditions, the track has never been seriously damaged. Athletes continue to train on it and it is still recognized for its speed. Due to extraordinary incidents, however, there have been small areas that ultimately had to be replaced. In each case, Mondo staff responded quickly and a piece of new material was cut and fixed without disrupting our schedule. Not even this altered the efficiency of the track."

*Jean-Guy Ouellette*

*Athletic Director, Université de Sherbrooke*



"It was such an excellent investment that we acquired a second one."



1977 INSTALLATION  
Competition site triangle meet  
between Canada-U.S.A.-Italy

2003  
Warm-up facility for the  
IAAF Youth Championships



## NEW YORK ARMORY

"We needed a surface that would be bullet proof. Last year, we hosted 90 meets and over 350,000 athletes running over 2 million laps. Additionally, broad access has been given to both community groups and educational institutions. We are more than just the fastest track on earth, we may be the most used."

*Ken Dwyer*

*Building Manager, New York Armory*



## IUPUI

"We are excited about the performances and high-caliber meets we have hosted over the years. After 10 years, with the exception of restriping, little money has been spent to maintain the surface."

**The Mondo surface is extremely durable. To my knowledge, no other 10-year-old track would have enabled us to host such high levels of competition, without the cost of resurfacing."**

*Julie McKenney*

*Director, Indiana University Natatorium*

**IU Michael A. Carroll Track & Soccer**

**Stadium hosted:**

- 1982 USA vs. Russia Dual Meet
- 1983 USATF Outdoor Championships
- 1985-1986 NCAA Division I Championships
- 1987 Pan American Games
- 1988 U.S. Olympic Track & Field Trials
- 1997 USATF Outdoor Championships
- 2001 USATF National Club T & F Championships
- 2005 USATF National Junior Olympic Track & Field Championships
- 2006 & 2007 USATF Outdoor Championship

## MARIST HIGH SCHOOL

"We needed a multipurpose surface that could withstand the daily activities that take place on our high school campus. Besides the heavy use the track gets from our student body during track season, there is daily traffic from off-season workouts, golf carts, mowers, utility vehicles and football cleats. The Mondo surface withstands everything very well. The performance of athletes on the surface during the track season has been so good that we are now the host of the regional track meet. Everybody wants to run on the Mondo track so they can run their best times and qualify for the state meet. We had to replace a small piece of the track around the curve, which was done quickly without disrupting practice later the same day. We are very pleased with the product."

*Tommy Marshall*

*Athletic Director, Marist High School*



**UNIVERSITY OF ARKANSAS, LITTLE ROCK**

“The track has just been super! It looks great, is easy to maintain, and our students love it. I cannot tell you how many times I have heard users talking about how great the floors look. After a year of use, we are still extremely pleased and proud of our decision to give our students the best running/walking surface on the market.”

*Logan Champton  
University of Arkansas at Little Rock*



BRIGHAM YOUNG UNIVERSITY

UNIVERSITY OF ARKANSAS, LITTLE ROCK



**UNIVERSITY OF NORTH TEXAS**

“The track is really the centerpiece of the whole facility. It’s quite attractive, weaving in and throughout the whole building, allowing users a great view. We receive a lot of comments from students, faculty and staff that it’s durable, yet comfortable and that it’s a very forgiving surface on the knees and legs. It really adds to the building.”

*Sue Delmark  
Assistant Dean and Director of Recreational Sports*



TULSA COMMUNITY COLLEGE



BOSTON UNIVERSITY



WIKES UNIVERSITY



CENTER FOR THE INTREPID



NATIONAL INSTITUTE FOR FITNESS AND SPORT

### SPEED DYNAMICS AND VELOCITY SPORTS PERFORMANCE

"Mondo has always been the state-of-the-art surface for high performance sports. I selected Mondo for our sports performance training centers because Mondo has consistently demonstrated its commitment to the highest quality and uniformity in their products. Our centers require a surface that can be easily installed and maintained. Mondo has set the standard in these areas. With the volume of athletes we have through our centers, we need a product that has great durability and does not breakdown over time. We need a surface that can be used not just for straight-ahead training, but that can serve under all conditions. I am more than happy with the results we get from our Mondo tracks. You will be too."

Loren Seagrave, Founder



BODY ZONE



EAST LAKE YMCA



CEDAR HILL RECREATION CENTER



SPEED DYNAMICS AND VELOCITY SPORTS PERFORMANCE



UTAH OLYMPIC OVAL



ICAHN STADIUM • IAAF CLASS I TRACK

**SAN JOSÉ CITY COLLEGE**

"Prior to determining what brand of synthetic track we were going to install at San José City College, I visited numerous facilities across the United States to gather information that would help us to make this decision. Again and again I heard nothing but glowing comments from the track coaches who had been using Mondo's product with their track and field athletes for varying lengths of time. **Without exception I heard nothing but wonderful comments about performance and reduced injuries.**

My athletes have been on Mondo's surface here at San José City College for three years, and I would add my voice to those facilities that have become positive spokespeople for this product. There has been no reduction in the quality of marks that have attained on our facility as related to the surface. **And we have had a reduction of the number of athletes complaining about shin splints.** In addition to these items, the wear factor has been great. There has only been minor wear at the start areas of the sprint with no visible deterioration anywhere else on the track.

I have been unquestionably satisfied with how this product has performed for the three years my athletes have been on it."

*Steve Haas, Track Coach  
San José City College*



JUNIPER VALLEY PARK  
COLLEGE SAN MATEO

**JUNIPER VALLEY PARK**

"We are responsible for over 200 tracks so we need a surface that is extremely low maintenance. **For us, resurfacing tracks, every 5 to 7 years is a logistical nightmare.** The Mondo surface's longevity and durability allows us to provide the citizens not only a better track, but better services, as well. **As a result of the Mondo track, our maintenance people are more efficient and our maintenance budgets more cost effective."**

*Jerry Schwartz, Project Manager  
New York City Parks and Recreation*



EAST LOS ANGELES COLLEGE



MERRITT COLLEGE



LANEY COLLEGE



COLLEGE SAN MATEO



LOS ANGELES VALLEY COLLEGE

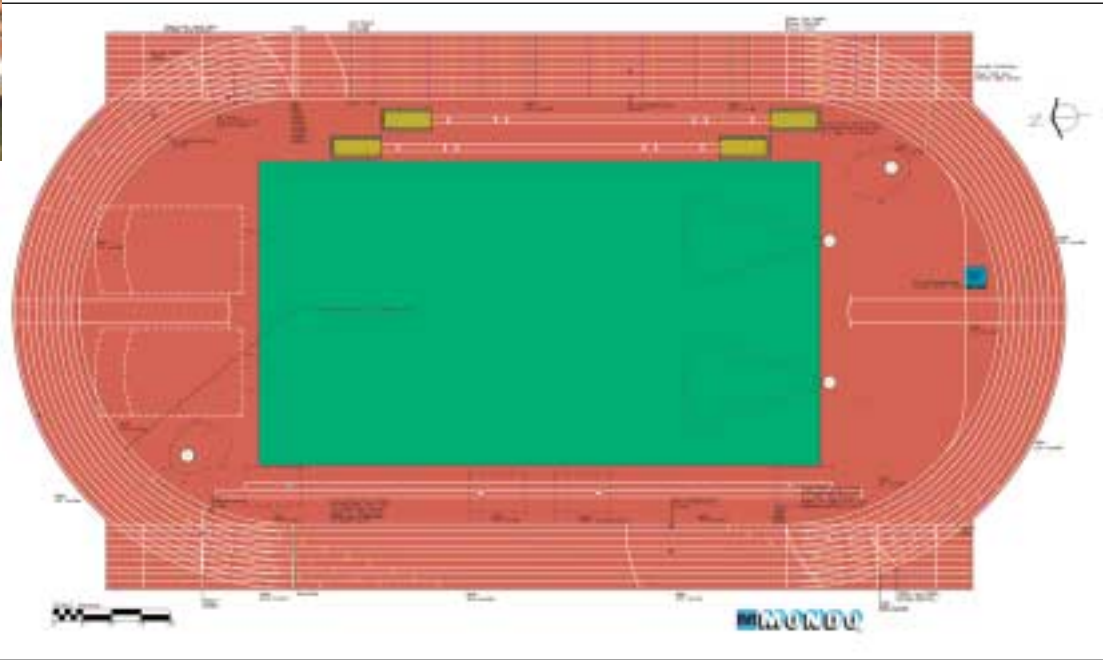


CERRITOS COLLEGE

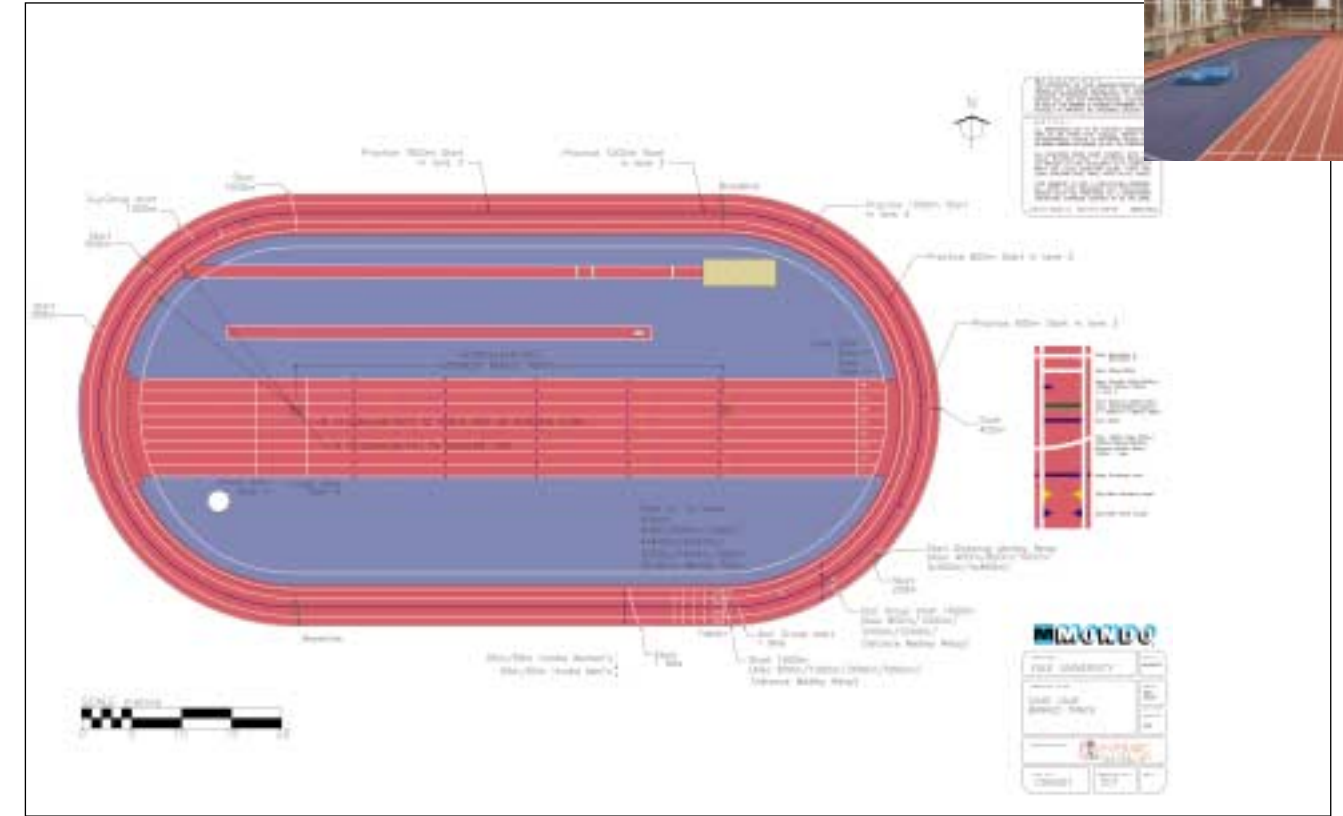
# DESIGN & ENGINEERING

Our customers enjoy full service, end-to-end support for the design, engineering, project management and installation of Mondo track.  
Our solutions are tailored to the unique needs of each facility.

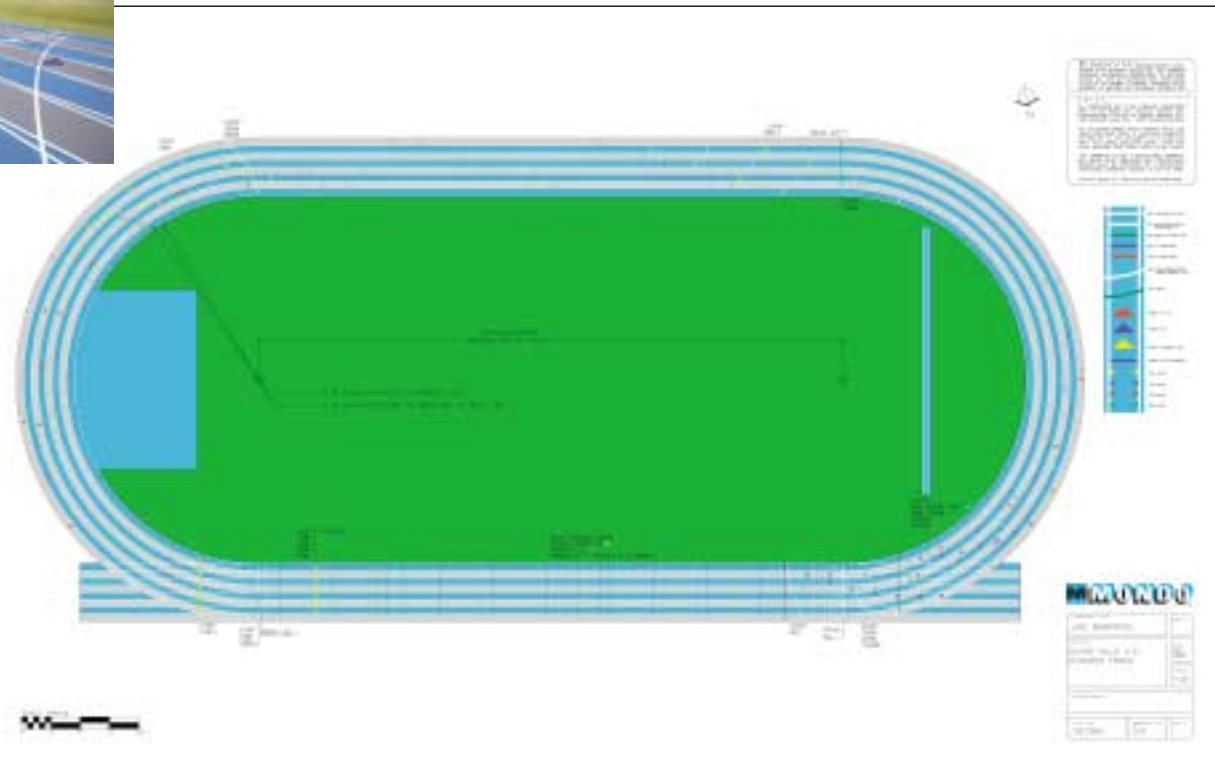
**UNIVERSITY OF ARKANSAS**  
Outdoor track • 8 Lanes



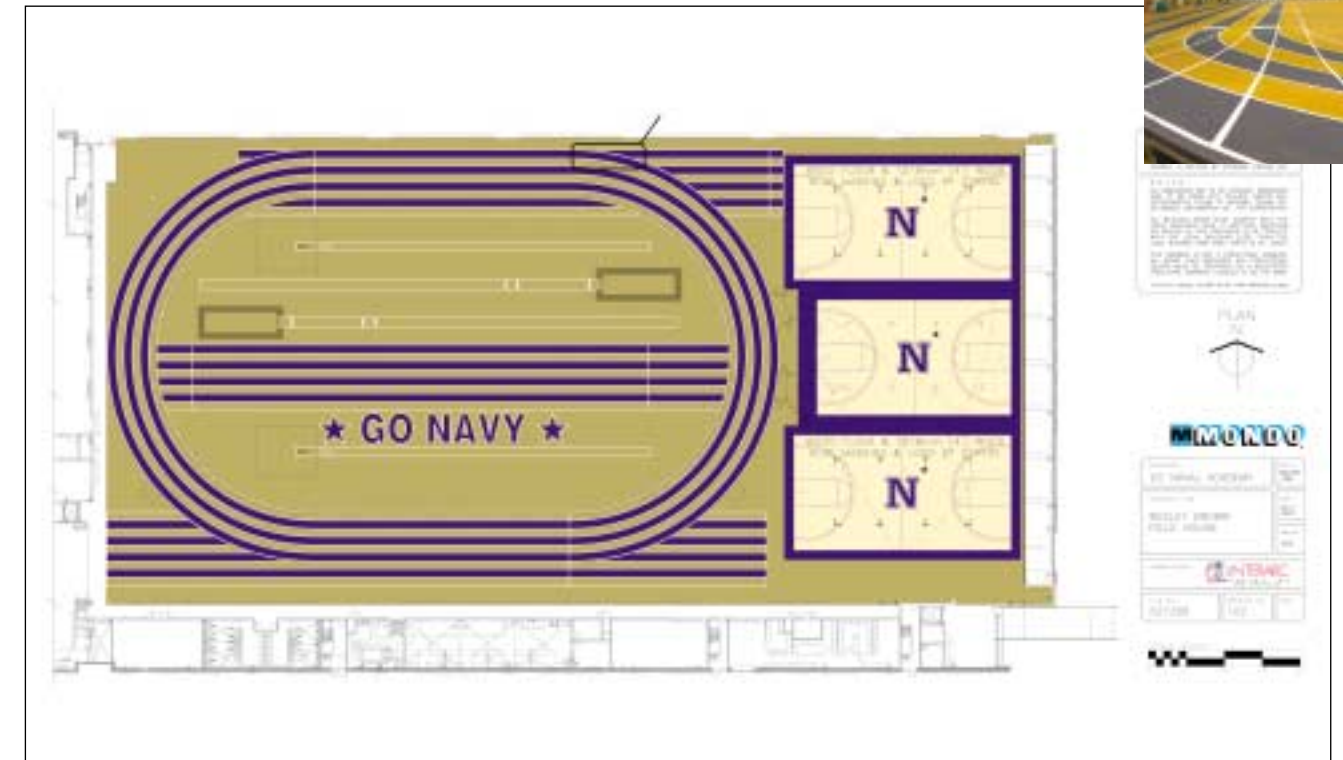
**YALE UNIVERSITY**  
Indoor portable track • 4 Lanes



**GLENN HILLS HIGH SCHOOL**  
Outdoor track • 8 Lanes



**U.S. NAVAL ACADEMY**  
Indoor HYDRAULIC track • 6 Lanes





### MEMORIAL STADIUM

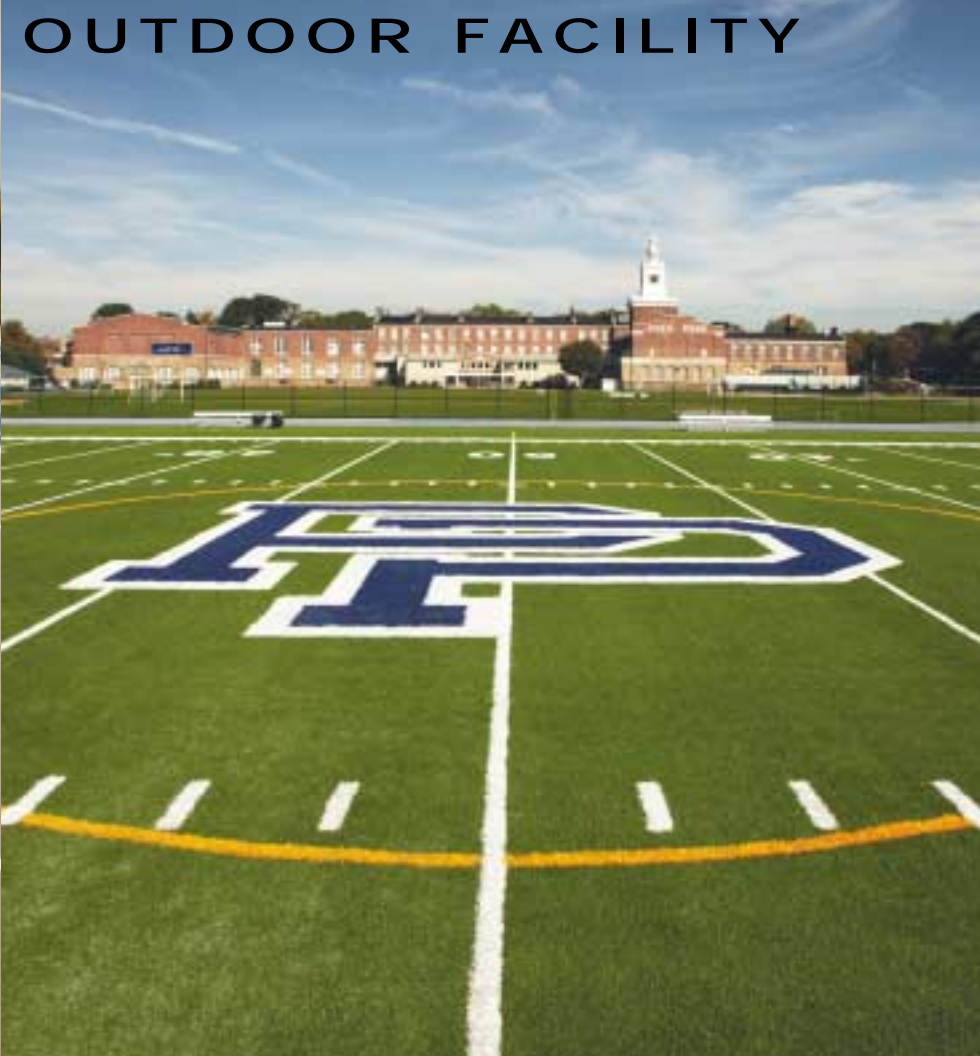
Mondo track is renowned for being able to return a substantial amount of energy back to the runner, enabling athletes to achieve their best times with fewer injuries. Midland wanted similar quality for its field and was impressed by the engineering of Mondo Ecofill®.

“Our old field would not hold up to the daily practices and games, so we were unable to use it as much as we would have liked. Now we’ll be able to have as many as 6 football games a week on the new field as well as soccer practices and games. The benefits of the turf are numerous. The playing surface is consistent and easy to maintain. Because of the consistency, we hope to reduce athletic injuries that occur on a field that is rough, hard and uneven. Temperatures go up to 105 degrees here. We expect Ecofill® to absorb a lot of the heat and be a cooler surface. The field also looks more natural because of the green granule”.

*James Rigger Architect, Director of Plant Services  
Midland Independent School District*



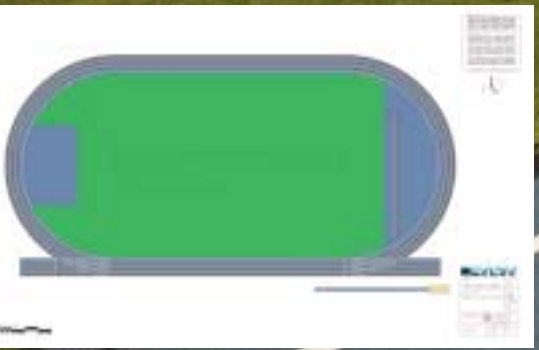
# MONDOTURF AND MONDOTRACK: THE ULTIMATE OUTDOOR FACILITY



### POLY PREP COUNTRY DAY SCHOOL

“With the amount of use our fields receive, and with the hot summer temperatures in New York City, we wanted a synthetic field that wouldn’t get hot like reground-tire fields and that acted like natural grass. MondoTurf Ecofill® meets both of those requirements. It doesn’t absorb heat like other infill systems, and like a natural field, it allows players to pivot and slide and reduces the risk of injuries associated with falls. We are absolutely thrilled with the field and extremely pleased with our decision to go with Mondo.”

*Steve Andersen, associate head of school,  
Poly Prep Country Day School*



*For more information, please consult our  
Mondoturf brochure or go to [www.mondousa.com](http://www.mondousa.com)*

# OTHER FEATURES & BENEFITS



Mondo rubber surfaces have minimal harmful effects on the environment at every stage—production, storage, installation and disposal. They also are recyclable.



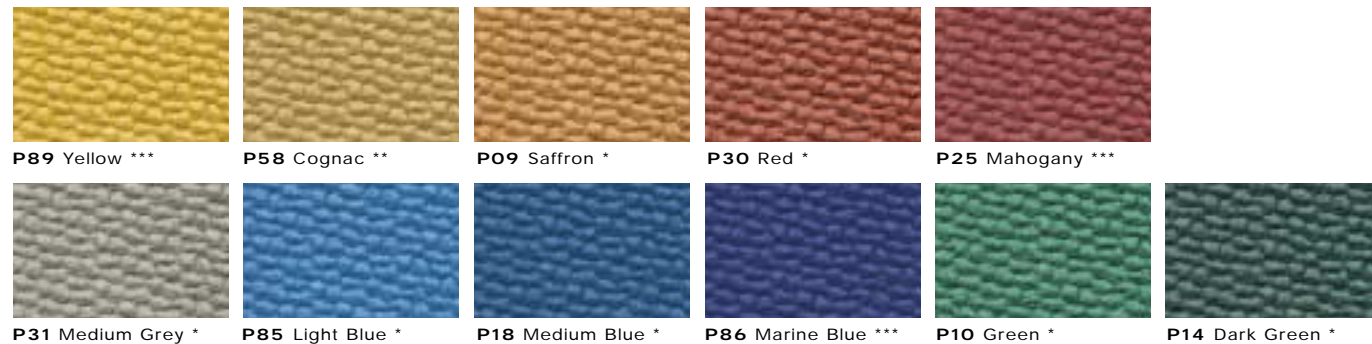
## 100% ENVIRONMENTALLY FRIENDLY

The rubber is harvested according to sustainable developmental principles. The Hevea tree is not harmed and continues to grow and reproduce making it a sustainable and rapidly renewable material. **There is a world of difference between natural rubber, polyurethane and latex. Of the three, only natural rubber is safe for the environment** because it is the only one without hazardous materials, heavy metals or toxic emissions of any kind.

## CHARACTERISTICS

- **Easy to Repair**—unlike a poured surface
- **Stain Resistant**—easy to clean
- **Unrivalled Point Load Recovery**—bleachers, benches, vans and equipment areas
- **Superior Biomechanical Design**—greater comfort and safety
- **Climate Neutral**—installed everywhere in the world, consistent performance in warm and cold climates
- **Superior Foot Traction**
- **Unparalleled Consistent Response**
- **Exact Material Thickness**—controlled during manufacturing
- **Embossed Surface Texture**—granule-free, never cracks or shrinks
- **Low Maintenance**—no need for protective coatings or refinishing
- **Product Quality**—manufactured to strict Quality Assurance guidelines.
- **Superior Technology**—rugged, durable track composed of 2 layers of rubber molded and vulcanized together using high heat and pressure
- **Multipurpose**—Indoor or Outdoor: lacrosse, football, basketball, baseball & other recreational activities

## COLOR RANGE • MONDOTRACK • SUPER X PERFORMANCE



\* Indoor and outdoor colors    \*\* Outdoor color only    \*\*\* Indoor color only    Custom colors available on order. Minimum quantity required.

ROLL LENGTHS:  
 MONDOTRACK 10' to 52' (3 m to 16 m)  
 SUPER X PERFORMANCE 10' to 92' (3 m to 28 m)  
 Length of rolls vary depending on width and thickness

ROLL WIDTHS: 3' to 6' (.92 m to 1.83 m)  
 THICKNESSES :  
 MONDOTRACK 13 mm (33/64")  
 SUPER X PERFORMANCE 6 mm (1/4"), 8 mm (5/16"), 10 mm (3/8"), 12 mm (1/2"), 14 mm (9/16")

## MONDO SPORT AND CONTRACT SURFACES



- |                                                                                                                          |                                                                                            |                                                                             |                                                                                                             |                                             |
|--------------------------------------------------------------------------------------------------------------------------|--------------------------------------------------------------------------------------------|-----------------------------------------------------------------------------|-------------------------------------------------------------------------------------------------------------|---------------------------------------------|
| <b>CONTRACT</b><br>For our full line of contract surfaces, visit: <a href="http://www.mondousa.com">www.mondousa.com</a> | <b>TURF</b><br>Mondoturf FTS 3<br>Mondoturf Ecofill® Star MF<br>Mondoturf Ecofill® Star TB | <b>GYMNASIUM &amp; MULTIPURPOSE</b><br>Advance<br>Mondoflex II<br>Sportflex | <b>WEIGHT ROOM CARDIO AREA</b><br>Sport Impact<br>Ramflex<br>Highjolt (Cardio only)<br>Ramflex interlocking | <b>ICE ARENA</b><br>Sport Impact<br>Ramflex |
|--------------------------------------------------------------------------------------------------------------------------|--------------------------------------------------------------------------------------------|-----------------------------------------------------------------------------|-------------------------------------------------------------------------------------------------------------|---------------------------------------------|



# EVERY ATHLETE DESERVES A CHANCE TO PLAY

## SUPER X-THE ORIGINAL SURFACE FOR MIRACLE LEAGUES AND ADAPTIVE USE FACILITIES

- Low heat transmission
- Natural antimicrobial, no bacteria growth
- Non-porous for easy cleaning
- Meets ADA requirements wet or dry
- Most stable and consistent surface for wheel chairs and walkers
- Supplier of track surfacing for the last 8 Para-Olympic games
- Most extensive warranty