



G2007/W



G2007/S



G2007/F



NOVANTA/35

MOULDING TECHNOLOGY WITH ASSISTED GAS INJECTION

For the production of its seats (both monobloc and folding), Venelli has adopted an innovative process that allows the elimination of the metal frame traditionally used around the edge of the seat.

With the assisted gas injection process, it is possible to create a hollow tubular channel inside the structure; which acts as an "armour", which offers extreme resistance to knocks and breakage.

After injecting the thermoplastic material into the mould, high pressure nitrogen is inserted and a part of the material (still in its semi-liquid phase) is eliminated, thereby creating a hollow around the edge of the seat.

The elimination of the metal structure reduces the cost of the seats, and also limits the maintenance and replacement costs.

Mondo S.p.A.
Tel +39 0173 23 21 11
Fax +39 0173 23 24 00
info@mondospa.com

La Metaltecnica Venelli Srl
Tel +39 031 50 52 12
Fax +39 031 50 53 82

Mondo Ibérica S.A.
Tel +34 976 57 43 03
Fax +34 976 57 43 71
market@mondoiberica.es

Mondo Luxembourg S.A.
Tel +352 557078-1
Fax +352 557693
mondo@mondo.lu

Mondo America Inc.
Tel +1 450 967 5800
Fax +1 450 663 7927
US 1-800-361-3747
Canada 1-800-663-813
mondo@mondousa.com

Mondo U.S.A. Inc.
Tel +1 610 834 3835
Fax +1 610 834 3837
mondo@mondousa.com

Mondo France S.A.
Tel +33 1 48264370
Fax +33 1 48265673
info@mondo.fr

Mondo GmbH
Tel +49 0651 97902-0
Fax +49 0651 97902-10
info@mondo.de

Mondo Portugal
Tel +351 21 234 87 00
Fax +351 21 234 87 09
mondoportugal@mondo.pt

Mondo Nordic AB
Tel +46 835 7272
Fax +46 825 9092
info@mondonordic.se

Mondo UK Ltd.
Tel +44 178 855 5012
Fax +44 845 362 8322
cjack@mondosport.co.uk

Mondo Sport LLC
Tel +7 495 662 1902
Fax +7 495 363 1339
info@mondoworldwide.ru

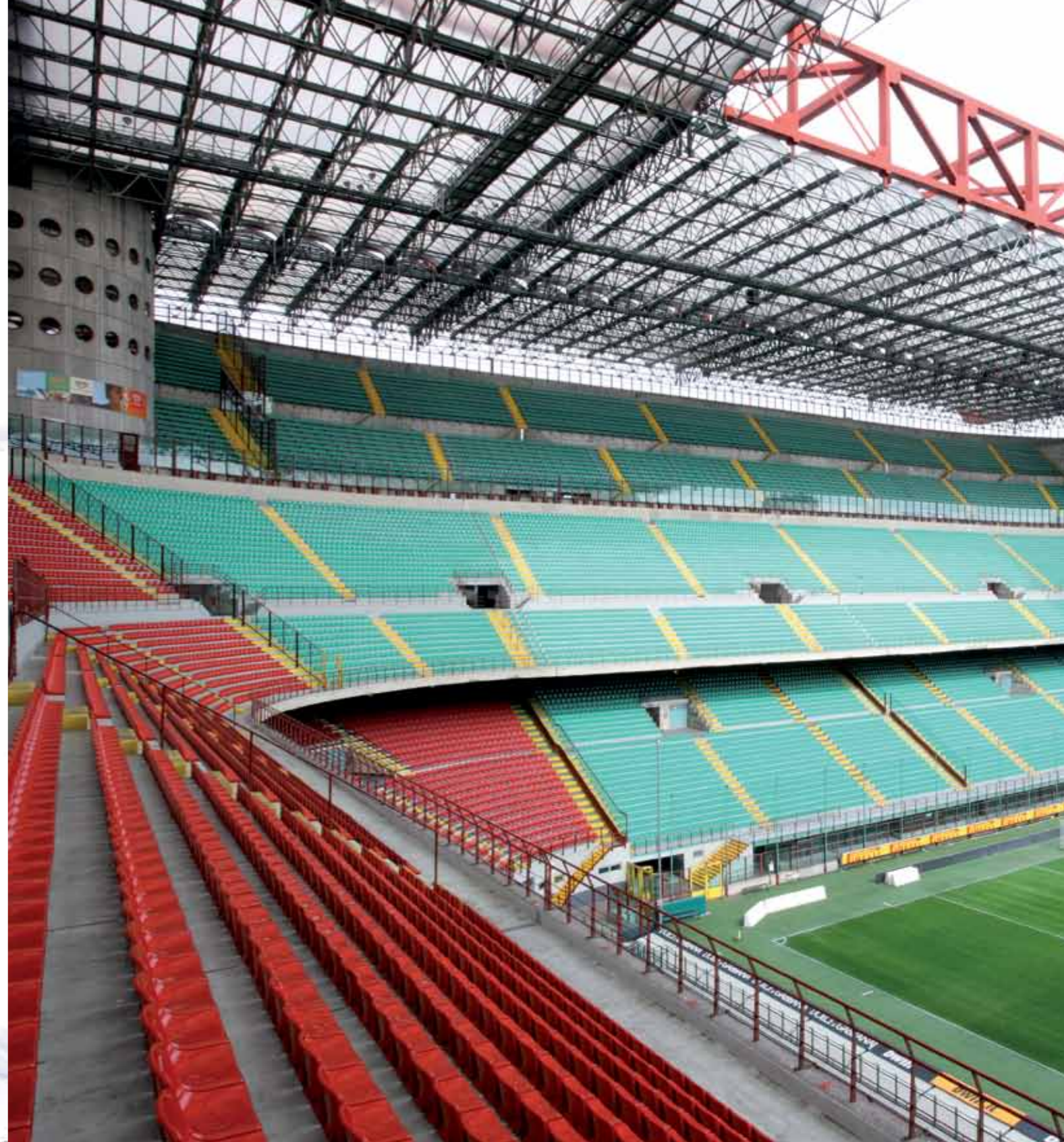
Mondo Floorings China Ltd
Tel +86 10 6159 8914
Fax +86 10 6159 5854
info@mondochina.com.cn

MONDO www.mondoworldwide.com

G2007-NOVANTA/35-VENELLI SEATING INNOVATIVE TECHNOLOGY FOR SEATING SYSTEM MOULDING

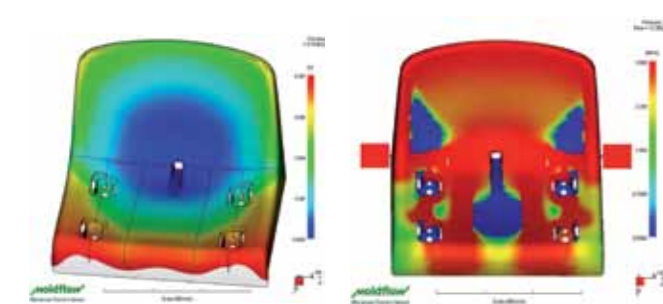
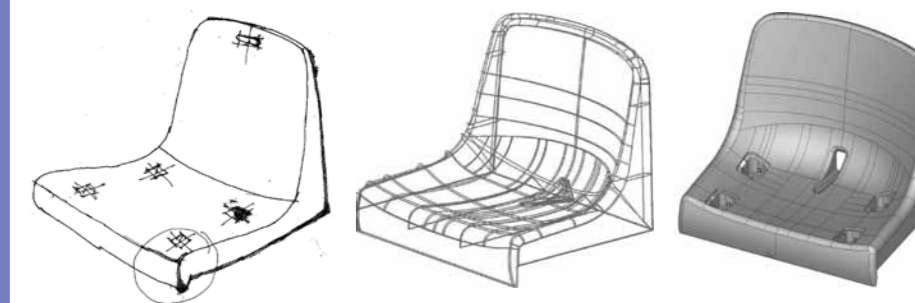


MONDO VENELLI SEATING.



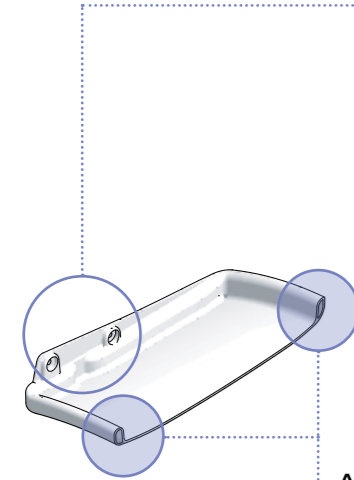
EVERY YEAR WE INVEST
6% OF OUR PROFITS
IN R&D

Our aim is to develop products that guarantee endurance, practicality, ergonomics, and reduced maintenance costs.



G2007

BACKREST



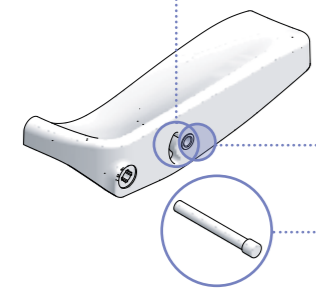
Two fixing points located on the outer side, anchor the backrest to the lateral metal structures using anti backout screws

It is not necessary to drill the plastic part of the backrest in order to fix it to the supporting structure



A hollow structural tubular around the entire edge of the backrest guarantees greater resistance to knocks and breakage

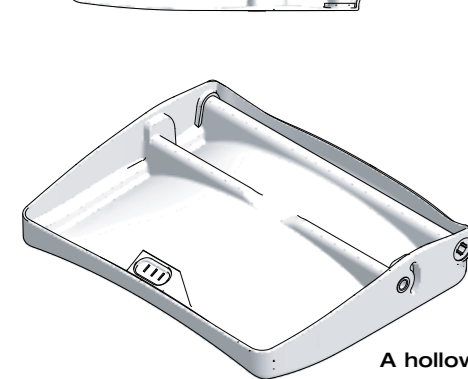
SEAT



Additional safety locking system

Retractable rotation pivot, and second pivot for seat safety and balancing

No visible metal parts



Counterweight inserted in the seat itself

The outer parts act as a stop against the metal structures

A hollow structural tubular around the entire edge of the seat guarantees greater resistance to knocks and breakage

G2007 RANGE

- Seats that fold down with gravity, and complete with an end stop
- Free-standing seat and backrest in thermoplastic material, with a hollow structural tubular along both edges
- Structure free of metal inserts or corners
- Non-removable number plate inserted in a special holder
- The seat can be fitted with armrests, a glass-holder armrest, or padded panels (for both the seat and the backrest)

G2007/W



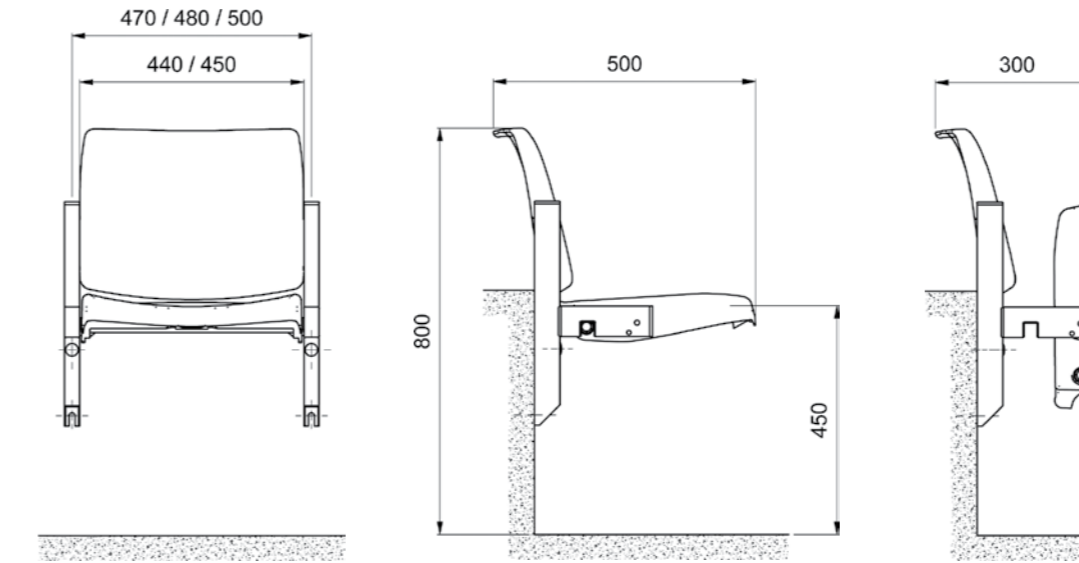
G2007/S



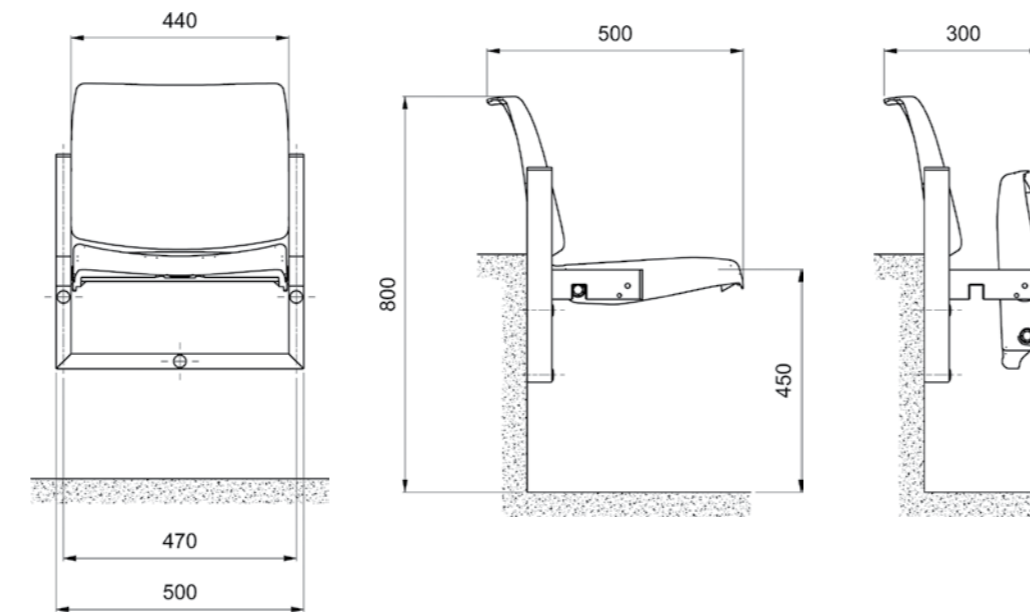
G2007/F



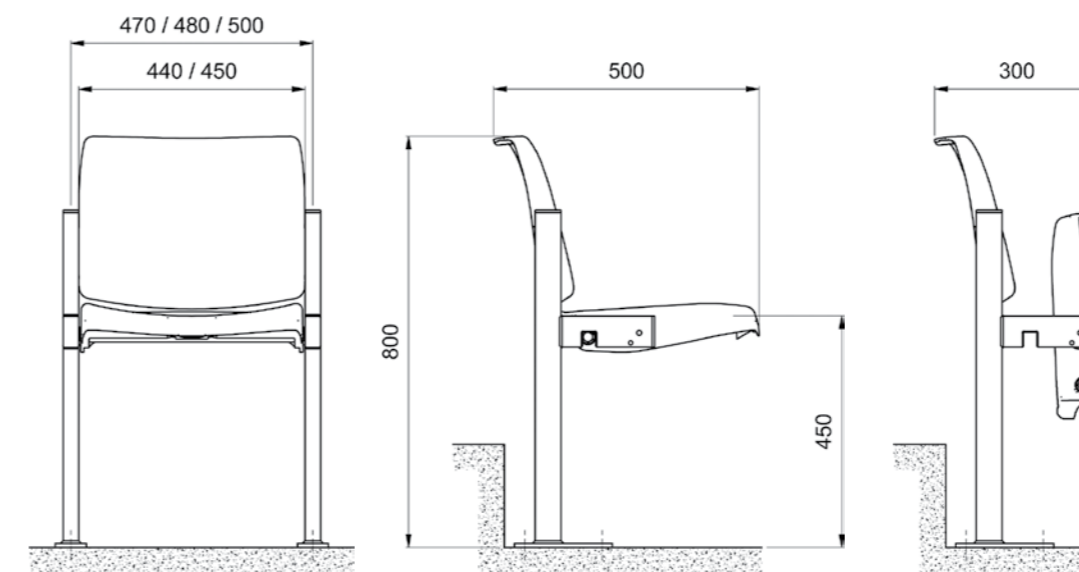
TECHNICAL DATA G2007/W



TECHNICAL DATA G2007/S



TECHNICAL DATA G2007/F

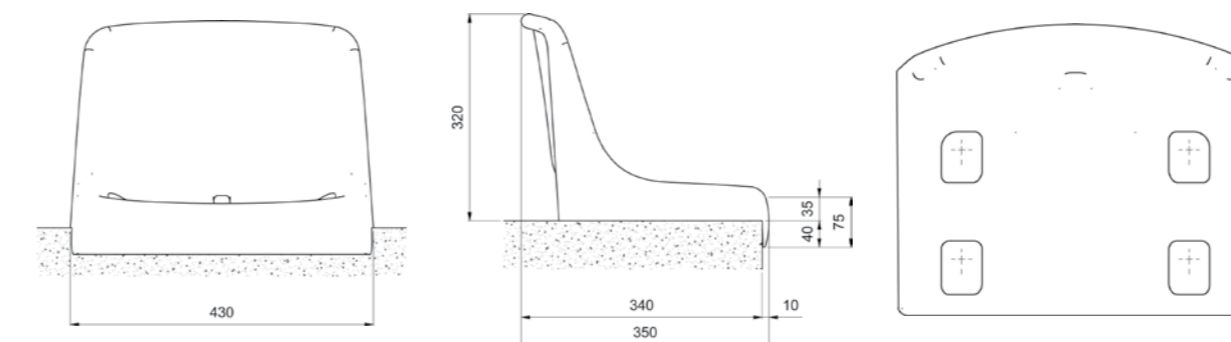


NOVANTA / 35 RANGE

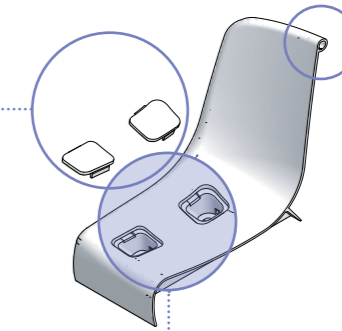
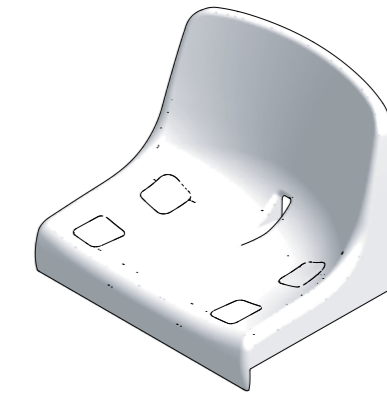
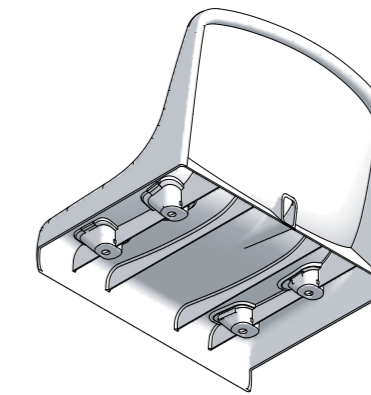
- High backrest, in line with FIFA and UEFA recommendations
- Hollow structural tubular around the edge of the backrest
- Structure in thermoplastic material
- Non-removable number plate inserted in a special holder
- Water drainage hole
- Can be installed using metal load-bearing supports in places with no steps, or on non-standard steps



TECHNICAL DATA NOVANTA/35



NOVANTA/35



A hollow structural tubular around the entire edge of the backrest guarantees greater resistance to knocks and breakage

4 fixing points with non-removable hole-cover plugs for installation on both concrete steps and other types of surface

The front is flat, and lies completely flush with the edge of the step this means the seat cannot be pulled up as an act of vandalism