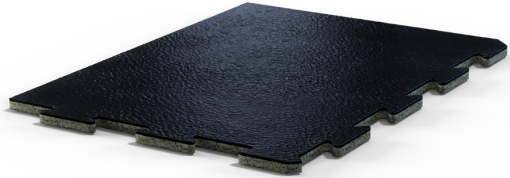


RAMFLEX INTERLOCK 8 MM



Prefabricated indoor sport flooring in rolls in a constant 8 mm thickness, consisting of natural and synthetic calendered and vulcanized rubber. Surface is hammered, opaque, non slip, anti-bacterial, marble-effect with uniform composition in 2 mm. This wear layer is vulcanized onto a load bearing, low hardness, low density, and flexible subfloor with a high content of recycled post-consumer material.

The product is Phthalate-free, bisphenol-A free, isocyanate-free and has less than 5% plasticizers.

Non porous rubber surface provides ease of maintenance and antibacterial protection against MRSA and odors.

The use of rubber brings specific advantages in front of other materials, like no need of weld rods for installation and a superior protection against intensive use.

The interlocking tiles allow easy and fast procedures of application and removal that represent an ideal solution for renovations, high moisture conditions and temporary applications.

Due to its excellent resistance to cutting or ripping, this product is ideal for gymnasiums and fitness centers, particularly for those areas where the flooring must withstand heavy weights of sport equipment. It is also suitable for ice skating rings, as it resists particularly well to wear abrasion from ice skating blades.

NORMATIVE

This product has been certified to be in compliance with European Standards EN14041 including Declaration Of Performance (DoP, CE marking) and it is rated Euroclass Cfl-S1 in accordance with EN13501.

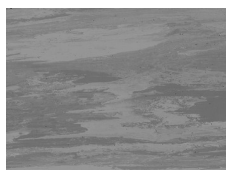
This product has been certified in compliance with the following schemes and standards for Indoor Air Quality programs (Volatile Organic Compounds emissions):

- Greenguard and Greenguard Gold (UL Certification Program).
- French scope (2011-321): Class A+.

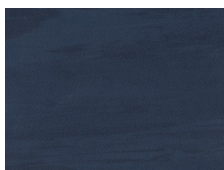
This article is produced in compliance with the European Regulation REACH (Registration, Evaluation, Authorization and Restriction of Chemicals).

This product is designed and manufactured according to UNI EN ISO 9001 certification.

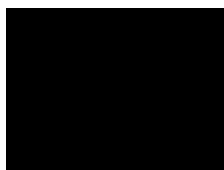
COLOR RANGE



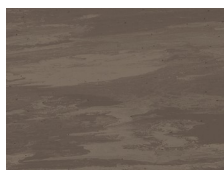
707



986



790



715



920

This color range is to be used as a guideline only.

27/02/2020

Mondo keeps the right to modify the characteristics of the products in any moment



INSTALLAZIONE E MANUTENZIONE

The product must be stored and installed in appropriate conditions, including suitable protected premises at guaranteed minimum and maximum temperatures and humidity, as fully described in MONDO's *Storage and Installation Instructions*. The product must be used and maintained following the premises described in MONDO's *Use and Maintenance Instructions*.

DIMENSIONS

Thickness	Weight	Tile Size
8 mm	10,8 kg/m ²	90x90 cm

For additional product information, please refer to the Technical Data Sheet.

SUITABLE FOR

Indoor Sport Facilities

- Fitness - Strength Cardio
- Fitness - Mobility / Stability
- Fitness - Fitness Classes