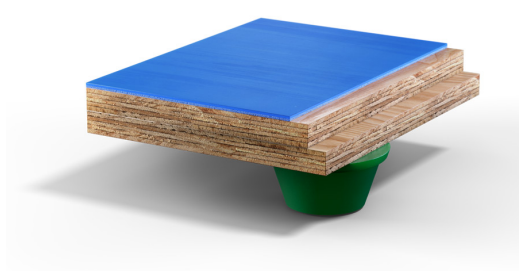


ELASTIFLEX



Areaelastic indoor flooring system, with a Mondoflex finish on top, built on site with several different layers in a total thickness of 56,5 mm:

- A 500 gauge polyethylene sheet previously fitted on the floor, which prevents from high humidity rate coming from the subfloor by mean of creating a barrier of vapour.
- Elastic rubber supports: The structure is fitted with truncated cone-shaped elastic supports in its lower part, measuring 30 mm in height and with an upper diameter of 65 mm and lower diameter of 40 mm, manufactured using a rotacional modelling system process. These pads will be always equidistant from each other. The supports have been specifically designed for different sports, can absorb impact and revert to their original position thanks to the inner air chamber. Its

watertight hollow structure enables the air to act as a damper and maintains the properties and values of damping and deformation following a totally uniform curve.

- Two layers of 12mm phenolic plywood, interlinked at 70°, glued and screwed to each other, so to guarantee the best system uniformity.
- Prefabricated indoor sport surface in rolls consisting of natural and synthetic calendered and vulcanized rubber. Smooth, non-porous, non-slip and antibacterial surface in a total constant 2,5 mm thickness. The product has been certified in compliance with International schemes and standards for Indoor Air Quality programs (VOC, Volatile Organic Compounds emissions) like Greenguard, Greenguard Gold (UL Certification Program) and Environmental Product Declaration (EPD).

Non porous rubber surface provides ease of maintenance and antibacterial protection against MRSA and odors. The use of rubber brings specific advantages in front of other materials, like no need of weld rods for installation and a superior protection against intensive use.

This product is ideal for a multisport indoor hall where different indoor sport competitions are held, such of basketball, handball, volleyball, badminton or futsal.

STANDARDS COMPLIANCE

This product has been certified to be in compliance with with European Standard EN 14904 ("Surfaces for sports areas - Multi-sports floor systems for indoor use") including Declaration Of Performance (DoP, CE marking) and it is rated Euroclass Cfl-S1 in accordance with EN 13501.

This product has been rated "Non Hazardous" by external laboratory in accordance with the European Waste Catalogue. This means that it does not present a subrisk to public health or cause adverse effects on the environment.

This article is produced in compliance with the European Regulation REACH (Registration, Evaluation, Authorization and Restriction of Chemicals).

This product is designed and manufactured according to UNI EN ISO 9001 certification.

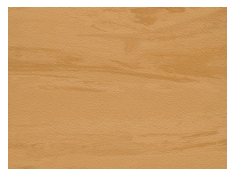
CERTIFICATIONS

Available International Sport Federation certificates for this product:

FIBA Certificate of Approval for Synthetic Flooring Category, Competition Level 2

IHF Certificate of Approval for Synthetic Floorings

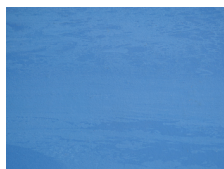
COLOR RANGE



MF61 MAPLE



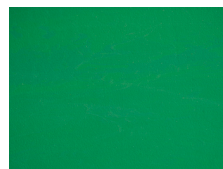
MF21



MF25



MF40



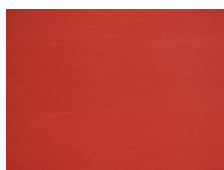
MF10



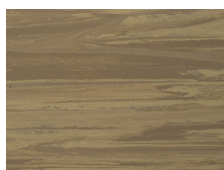
MF18



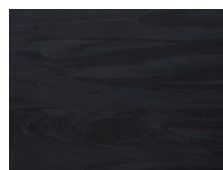
MF33



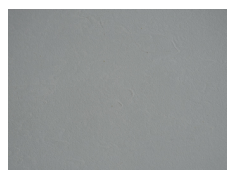
MF30



MF62



MF90



MF70

This color range is to be used as a guideline only.

INSTALLATION AND MAINTENANCE

The product must be stored and installed in appropriate conditions, including suitable protected premises at guaranteed minimum and maximum temperatures and humidity, as fully described in MONDO's *Storage and Installation Instructions*. The product must be used and maintained following the premises described in MONDO's *Use and Maintenance Instructions*.

DIMENSIONS

Thickness

56,5 mm

Weight

15,75 kg/m²