

## VINYLSPORT M 6,2 MM

---



PVC sports flooring for indoor use, supplied in rolls with a constant total thickness of 6,2 mm.

The flooring is consisting of an embossed wear layer with protective treatment provided with solid color or wood effect, a high density fiberglass-reinforced layer and an expanded dual-density vinyl foam backing.

This product is ideal for a multisport indoor hall where different indoor sport competitions are held, such of basketball, handball, volleyball, badminton or futsal.

### STANDARDS COMPLIANCE

This product has been certified to be in compliance with European Standards EN14904 (KA $\geq$  25%) including Declaration Of Performance (DoP, CE marking) and it is rated Euroclass Cfl-S1 in accordance with EN13501.

This product has been rated Non Hazardous by external laboratory in accordance with the European Waste Catalogue. This means that it does not present a subrisk to public health or cause adverse effects on the environment.

This product has been certified in compliance with the following schemes and standards for Indoor Air Quality programs (Volatile Organic Compounds emissions):

- French scope (2011-321): Class A+.
- Italian regulation CAM (Minimum Environmental Criteria) following D.M. 11/01/2017.

This article is produced in compliance with the European Regulation REACH (Registration, Evaluation, Authorization and Restriction of Chemicals).

This product is designed and manufactured according to UNI EN ISO 9001 certification.

### CERTIFICATIONS

Available International Sport Federation certificates for this product:

**BWF Synthetic Flooring Certificate**

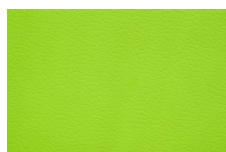
**IHF Certificate of Approval for Synthetic Floorings**

---

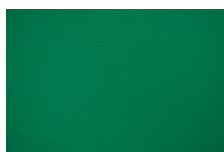
## COLOR RANGE



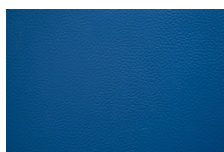
VM82



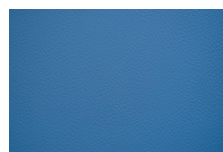
VM11



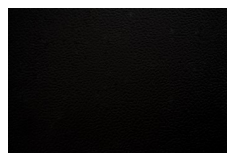
VM10



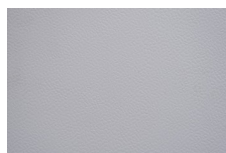
VM18



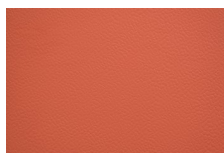
VM21



VM90



VM70



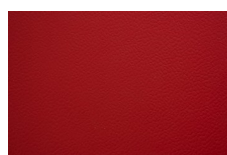
VM41



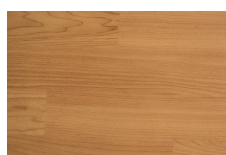
VM23



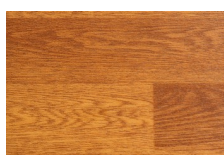
VM81



VM30



VM66



VM67

This color range is to be used as a guideline only.

## MAINTENANCE AND INSTALLATION

This product can be installed loose-laid without adhesive onto the concrete subfloor or simply with the use of adhesive tapes for temporary events, thanks to the excellent dimensional stability.

The product must be stored and installed in appropriate conditions, including suitable protected premises at guaranteed minimum and maximum temperatures and humidity, as fully described in MONDO's *Storage and Installation Instructions*. The product must be used and maintained following the premises described in MONDO's *Use and Maintenance Instructions*.

## DIMENSIONS

Thickness	Length	Width	Weight
6,2 mm	20 m	180 cm	4,15 kg/m <sup>2</sup>

For additional product information, please refer to the Technical Data Sheet.