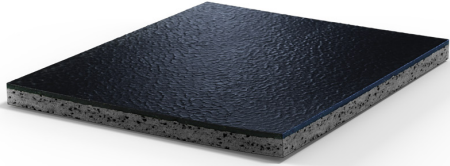


RAMFLEX 10 MM



Prefabricated indoor sport flooring in rolls in a constant 10 mm thickness, consisting of natural and synthetic calendered and vulcanized rubber. Surface is hammered, opaque, non slip, anti-bacterial, marble-effect with uniform composition in 2 mm. This wear layer is vulcanized onto a load bearing, low hardness, low density, and flexible subfloor with a high content of recycled post-consumer material.

The product is Phthalate-free, bisphenol-A free, isocyanate-free and has less than 5% plasticizers.

Non porous rubber surface provides ease of maintenance and antibacterial protection against MRSA and odors.

The use of rubber brings specific advantages in front of other materials, like no need of weld rods for installation and a superior protection against intensive use.

Due to its excellent resistance to cutting or ripping, this product is ideal for gymnasiums and fitness centers, particularly for those areas where the flooring must withstand heavy weights of sport equipment. It is also suitable for ice skating rings, as it resists particularly well to wear abrasion from ice skating blades.

STANDARDS

This product has been certified to be in compliance with European Standards EN14041 including Declaration Of Performance (DoP, CE marking) and it is rated Euroclass Cfl-S1 in accordance with EN13501.

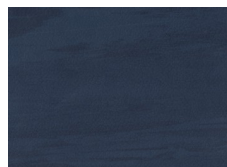
This product has been certified in compliance with the following schemes and standards for Indoor Air Quality programs (Volatile Organic Compounds emissions):

- Greenguard and Greenguard Gold (UL Certification Program).
- French scope (2011-321): Class A+.
- Environmental Product Declaration (EPD).

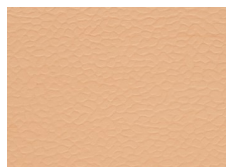
This article is produced in compliance with the European Regulation REACH (Registration, Evaluation, Authorization and Restriction of Chemicals).

This product is designed and manufactured according to UNI EN ISO 9001 certification.

COLOR RANGE



986



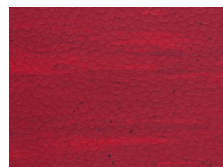
920



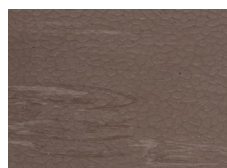
712



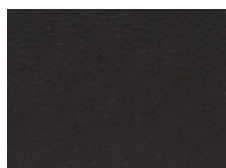
710



741



715



790



707

This color range is to be used as a guideline only.

INSTALLATION AND MAINTENANCE

The product must be stored and installed in appropriate conditions, including suitable protected premises at guaranteed minimum and maximum temperatures and humidity, as fully described in MONDO's *Storage and Installation Instructions*. The product must be used and maintained following the premises described in MONDO's *Use and Maintenance Instructions*.

DIMENSIONS

Thickness	Length	Width	Weight	Tile Size
10 mm	9 m	186 cm	13,5 kg/m ²	91,35 x 91,35 cm

For additional product information, please refer to the Technical Data Sheet.



SUITABLE FOR

Indoor Sport Facilities

- Ice Hockey - Ice Arena
- Strength & Conditioning
- Fitness - Strength Cardio
- Fitness - Mobility / Stability
- Fitness - Heavy Duty Strength
- Fitness - Fitness Classes