

MONDOARMOR 6 MM



Prefabricated indoor sport flooring in a constant 6 mm. thickness, consisting of natural and synthetic calendered and vulcanized rubber. Surface is embossed, monochrome base containing granules of identical composition, non slip, anti-bacterial, with uniform composition in 2 mm thickness. This wear layer is vulcanized onto a load bearing, low hardness, low density, and flexible subfloor of 4 mm. thickness with a high content of recycled post-consumer material. The product is Phthalate-free, bisphenol-A free and isocyanate-free.

The product has been certified in compliance with International schemes and standards for Indoor Air Quality programs (VOC, Volatile Organic Compounds emissions) like Greenguard, Greenguard Gold (UL Certification Program) and Environmental Product Declaration (EPD).

Non porous rubber surface provides ease of maintenance and antibacterial protection against MRSA and odors. The use of rubber brings specific advantages in front of other materials, like no need of weld rods for installation and a superior protection against intensive use.

Due to its excellent resistance to cutting or ripping, this product is ideal for gymnasiums and fitness centers, particularly for those areas where the flooring must withstand heavy weights of sport equipment.

STANDARDS

This product has been certified to be in compliance with European Standards EN 14041 including Declaration Of Performance (DoP, CE marking) and it is rated Euroclass Cfl-s1 in accordance with EN 13501.

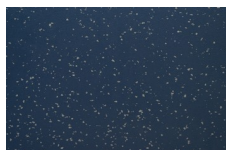
This product has been certified in compliance with the following schemes and standards for Indoor Air Quality programs (VOC, Volatile Organic Compounds emissions):

- Greenguard and Greenguard Gold (UL Certification Program).
- French scope (2011-321): Class A+.
- Environmental Product Declaration (EPD).

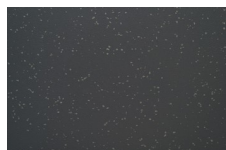
This article is produced in compliance with the European Regulation REACH (Registration, Evaluation, Authorization and Restriction of Chemicals).

This product is designed and manufactured according to UNI EN ISO 9001 certification.

COLOR RANGE



ME10



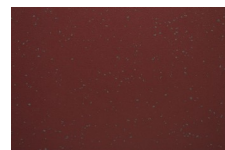
ME04



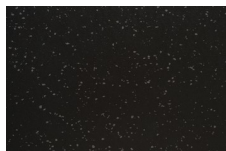
ME07



ME21



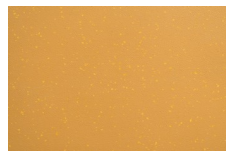
ME17



ME16



ME12



ME14

This color range is to be used as a guideline only.

INSTALLATION AND MAINTENANCE

The product must be stored and installed in appropriate conditions, including suitable protected premises at guaranteed minimum and maximum temperatures and humidity, as fully described in MONDO's *Storage and Installation Instructions*. The product must be used and maintained following the premises described in MONDO's *Use and Maintenance Instructions*.

DIMENSIONS

Thickness	Length	Width	Weight	Tile Size
6 mm	12 m	186 cm	8,3 kg/m ²	91,4 x 91,4 cm

For additional product information, please refer to the Technical Data Sheet.