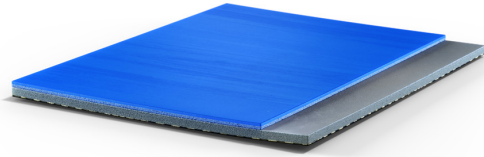


MONDOFLEX 2,5 MM + EVERLAY PROTECTION 4,7 MM



Prefabricated indoor sport flooring in rolls consisting of natural and synthetic calendered and vulcanized rubber. Smooth, non-slip surface with tone on tone marbled effect, vulcanized onto a load-bearing subfloor in similar color in a total constant 2,5 mm thickness.

The prefabricated Mondoflex layer is paired on-site with EVERLAY PROTECTION in 4,7 mm. EVERLAY is a dimensional stable and energy absorbing underlayment composed of reinforced fiberglass layer and expanded PVC foam. The two layers are coupled together, using an appropriate adhesive, to provide a loose laid system with a uniform thickness of 7,5 mm.

Non porous rubber surface provides ease of maintenance and antibacterial protection against MRSA and odors.

The use of rubber brings specific advantages in front of other materials, like no need of weld rods for installation and a superior protection against intensive use.

Due to the outstanding performance of the Everlay underlayment, the system has excellent shock absorption for sport use at the highest safety level. The use of the Everlay cushioned underlayment guarantees the athletic performance of the system while providing protection against moisture coming from subfloor. It is a loose laid system, which significantly extends the product life. The underside of the Everlay has a series of stems in expanded resins that improve the overall stability of the flooring system.

This product is ideal for a multisport indoor hall where different indoor sport competitions are held, such of basketball, handball, volleyball, badminton or futsal.

STANDARDS

This product has been certified to be in compliance with European Standards EN14904 (KA \geq 25%) including Declaration Of Performance (DoP, CE marking) and it is rated Euroclass Cfl-S1 in accordance with EN13501.

This product has been certified in compliance with the following schemes and standards for Indoor Air Quality programs (Volatile Organic Compounds emissions):

- Greenguard and Greenguard Gold (UL Certification Program).
- French scope (2011-321): Class A+.

This product has been evaluated through LCA analysis in compliance with EN15804 standard by issuing of the Environmental Product Declaration (EPD).

This article is produced in compliance with the European Regulation REACH (Registration, Evaluation, Authorization and Restriction of Chemicals).

This product has been rated Non Hazardous by external laboratory in accordance with the European Waste Catalogue. This means that it does not present a subrisk to public health or cause adverse effects on the environment.

This product is designed and manufactured according to UNI EN ISO 9001 certification.

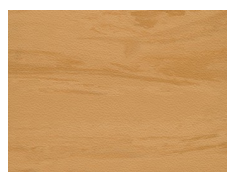
CERTIFICATIONS

Available International Sport Federation certificates for this product:

FIBA Certificate of Approval 2017-2018 for Synthetic Flooring Category, Level 2 and 3

IHF 2018 Certificate of Approval for Synthetic Floorings

COLOR RANGE



MF61 MAPLE



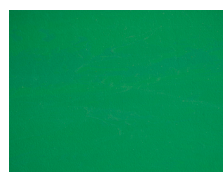
MF21



MF25



MF40



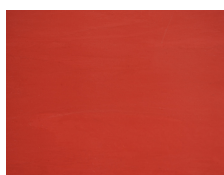
MF10



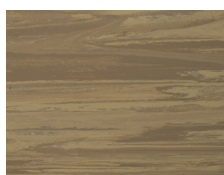
MF18



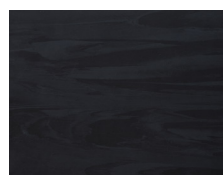
MF33



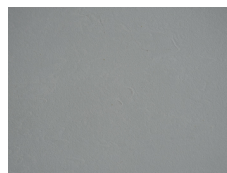
MF30



MF62



MF90



MF70

This color range is to be used as a guideline only.

MAINTENANCE AND INSTALLATION

The product must be stored and installed in appropriate conditions, including suitable protected premises at guaranteed minimum and maximum temperatures and humidity, as fully described in MONDO's *Storage and Installation Instructions*. The product must be used and maintained following the premises described in MONDO's *Use and Maintenance Instructions*.

DIMENSIONS

For additional product information, please refer to the Technical Data Sheet.