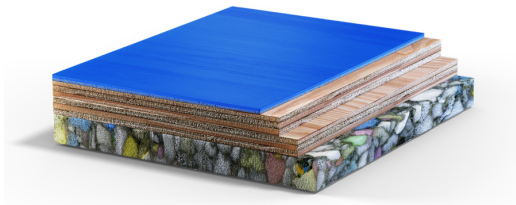


## PREMIER PLUS MONDOFLEX



Areaelastic indoor flooring system, with a MONDOFLEX finish on top, built on site with several different layers in a total thickness of 36,5 mm:

- A 500 gauge polyethylene sheet previously fitted on the floor, which prevents from high humidity rate coming from the subfloor by mean of creating a barrier of vapour.
- Expanded flexible polyurethane foam in sheets of 10 mm. thickness, providing excellent shock absorption. This underlayment provides excellent comfort and uniform shock absorption.
- Two layers of 12mm phenolic plywood, interlinked at 70°, glued and screwed to each other, so to guarantee the best system uniformity.
- Prefabricated indoor sport surface in rolls consisting of natural and synthetic calendered and vulcanized rubber. Smooth, non-porous, non-slip and antibacterial surface in a total constant 2,5 mm thickness.

The top layer of the system is MONDOFLEX, a non porous rubber surface which provides ease of maintenance and antibacterial protection against MRSA and odors.

MONDOFLEX rubber surface has been engineered for an intensive use and weld rods are not needed for its installation.

This product is ideal for a multisport indoor hall where different indoor sport competitions are held, such of basketball, handball, volleyball, badminton or futsal.

### STANDARDS

This product has been certified to be in compliance with with European Standard EN14904 including Declaration Of Performance (DoP, CE marking) and it is rated Euroclass Cfl-S1 in accordance with EN13501.

This article is produced in compliance with the European Regulation REACH (Registration, Evaluation, Authorization and Restriction of Chemicals).

This product has been rated Non Hazardous by external laboratory in accordance with the European Waste Catalogue. This means that it does not present a subrisk to public health or cause adverse effects on the environment.

This product is designed and manufactured according to UNI EN ISO 9001 certification.

### CERTIFICATIONS

Available International Sport Federation certificates for this product:

**FIBA Certificate of Approval 2017-2018 for Synthetic Flooring Category, Level 2 and 3**

**IHF 2018 Certificate of Approval for Synthetic Floorings**

## COLOR RANGE



**MF61 MAPLE**



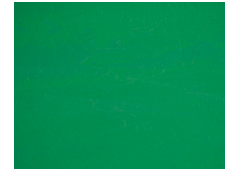
**MF21**



**MF25**



**MF40**



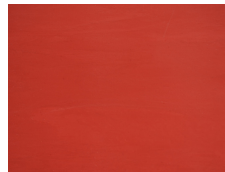
**MF10**



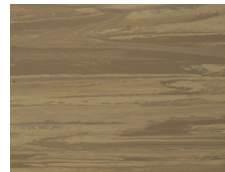
**MF18**



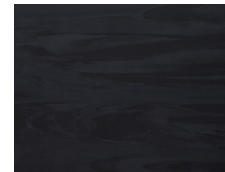
**MF33**



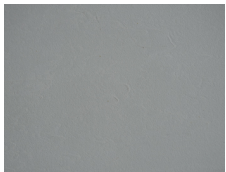
**MF30**



**MF62**



**MF90**



**MF70**

## INSTALLATION AND MAINTENANCE

The product must be stored and installed in appropriate conditions, including suitable protected premises at guaranteed minimum and maximum temperatures and humidity, as fully described in MONDO's *Storage and Installation Instructions*. The product must be used and maintained following the premises described in MONDO's *Use and Maintenance Instructions*.

## DIMENSIONS

**Thickness**

**36,5 mm**

**Weight**

**kg/m<sup>2</sup>**