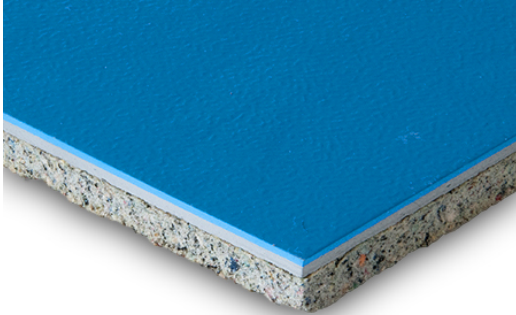


MONDOFLEX II + EVERLAY 1,2 MM



Prefabricated indoor sport flooring in rolls consisting of three layers joint together in a constant thickness of 7,5 mm. The two upper layers (2,5mm) are made of embossed and vulcanized rubber with mineral charges, stabilizers and color pigments. The 1st layer (1mm) gives the surface properties, and is smooth, anti-slippery, antireflective and marmorized. It is vulcanized onto the 2nd rubber layer (1,5mm), used to give the right stiffness and the distribution of loads. The lower layer (5mm) is made of expanded polyurethane foam, modulated to ensure technical requirements such as resistance to impact, energy absorption, elasticity, slip resistance and acoustic absorption.

The prefabricated Mondoflex II layer is paired on-site with EVERLAY A 1,2mm. The fibre glass underlayment, treated on both sides with synthetic elastomeric resins, is dimensional stable, moisture resistant and provides insulating properties. The two materials are coupled together, using an appropriate adhesive, to provide a loose laid system with a uniform thickness of 8,7 mm.

Non porous rubber surface provides ease of maintenance and antibacterial protection against MRSA and odors.

The use of rubber brings specific advantages in front of other materials:

- Weld rods are not needed for installation.
- Superior protection against intensive use.

The combination of the Everlay underlayment not only guarantees the stability of the system while providing complete protection against high humidity rates coming from subfloor, which significantly extends the product life. The underside of the Everlay has a series of stems in expanded resin that improve the overall stability of the flooring system.

This product is ideal for a multisport indoor hall where different indoor sport competitions are held, such of basketball, handball, volleyball, badminton or futsal.

STANDARDS

This product has been certified to be in compliance with European Standards EN14904 ($KA \geq 25$) including Declaration Of Performance (DoP, CE marking) and it is rated Euroclass Cfl-S1 in accordance with EN13501.

This product has been certified in compliance with the following schemes and standards for Indoor Air Quality programs (Volatile Organic Compounds emissions):

- Greenguard and Greenguard Gold (UL Certification Program).
- French scope (2011-321): Class A+.

This product has been evaluated through LCA analysis in compliance with EN15804 standard by issuing of the Environmental Product Declaration (EPD).

15/05/2018

Mondo keeps the right to modify the characteristics of the products in any moment

This product has been rated Non Hazardous by external laboratory in accordance with the European Waste Catalogue. This means that it does not present a subrisk to public health or cause adverse effects on the environment.

This article is produced in compliance with the European Regulation REACH (Registration, Evaluation, Authorization and Restriction of Chemicals).

This product is designed and manufactured according to UNI EN ISO 9001 certification.

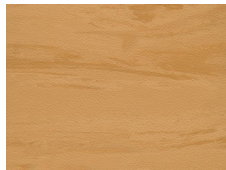
CERTIFICATIONS

Available International Sport Federation certificates for this product:

FIBA Certificate of Approval 2017-2018 for Synthetic Flooring Category, Level 2 and 3

IHF 2018 Certificate of Approval for Synthetic Floorings

COLOR RANGE



MF61 MAPLE



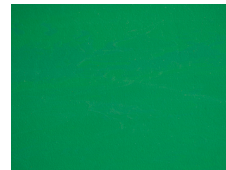
MF21



MF25



MF40



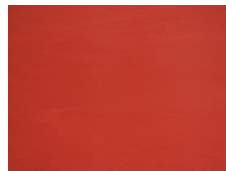
MF10



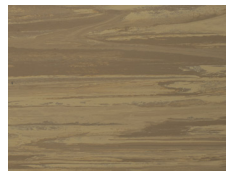
MF18



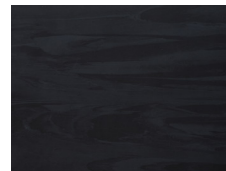
MF33



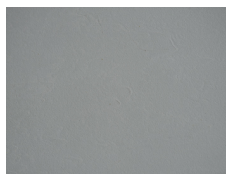
MF30



MF62



MF90



MF70

INSTALLATION AND MAINTENANCE

The product must be stored and installed in appropriate conditions, including suitable protected premises at guaranteed minimum and maximum temperatures and humidity, as fully described in MONDO's *Storage and Installation Instructions*. The product must be used and maintained following the premises described in MONDO's *Use and Maintenance Instructions*.

For additional product information, please refer to the Technical Data Sheet.