

MONDOFLEX 2,5 MM



Prefabricated indoor sport flooring in rolls consisting of natural and synthetic calendered and vulcanized rubber. Smooth, non-slip surface with tone on tone marbled effect, vulcanized onto a load-bearing subfloor in similar color in a total constant 2,5 mm thickness.

Non porous rubber surface provides ease of maintenance and antibacterial protection against MRSA and odors.

The use of rubber brings specific advantages in front of other materials:

- Weld rods are not needed for installation.
- Superior protection against intensive use.

This product is ideal for a multipurpose indoor hall where amatorial indoor sport activities are held, such of basketball, handball, volleyball, badminton or futsal.

STANDARDS COMPLIANCE

This product has been certified to be in compliance with European Standards EN14041 including Declaration Of Performance (DoP, CE marking) and it is rated Euroclass Bfl-S1 in accordance with EN13501.

This product has been certified in compliance with the following schemes and standards for Indoor Air Quality programs (Volatile Organic Compounds emissions):

- Greenguard and Greenguard Gold (UL Certification Program).
- French scope (2011-321): Class A+.
- Italian regulation CAM (Minimum Environmental Criteria) following D.M. 11/01/2017.

This product has been evaluated through LCA analysis in compliance with EN15804 standard by issuing of the Environmental Product Declaration (EPD).

This article is produced in compliance with the European Regulation REACH (Registration, Evaluation, Authorization and Restriction of Chemicals).

This product has been rated Non Hazardous by external laboratory in accordance with the European Waste Catalogue. This means that it does not present a subrisk to public health or cause adverse effects on the environment.

This product is designed and manufactured according to UNI EN ISO 9001 certification.

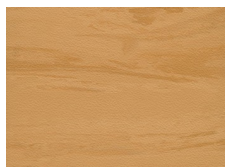
CERTIFICATIONS

Available International Sport Federation certificates for this product:

FIBA Certificate of Approval 2017-2018 for Synthetic Flooring Category, Level 2 and 3

IHF 2018 Certificate of Approval for Synthetic Floorings

COLOR RANGE



MF61 MAPLE



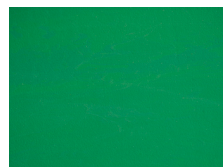
MF21



MF25



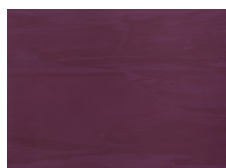
MF40



MF10



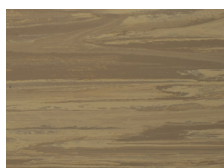
MF18



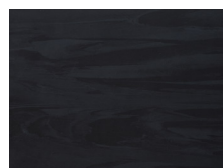
MF33



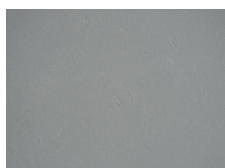
MF30



MF62



MF90



MF70

This color range is to be used as a guideline only.

INSTALLATION AND MAINTENANCE

The product must be stored and installed in appropriate conditions, including suitable protected premises at guaranteed minimum and maximum temperatures and humidity, as fully described in MONDO's *Storage and Installation Instructions*. The product must be used and maintained following the premises described in MONDO's *Use and Maintenance Instructions*.

DIMENSIONS

Thickness	Length	Height	Weight
2,5 mm	18 m	190 cm	3,75 kg/m ²

For additional product information, please refer to the Technical Data Sheet.



SUITABLE FOR

Indoor Sport Facilities

- Indoor Multisport
- Gymnasium