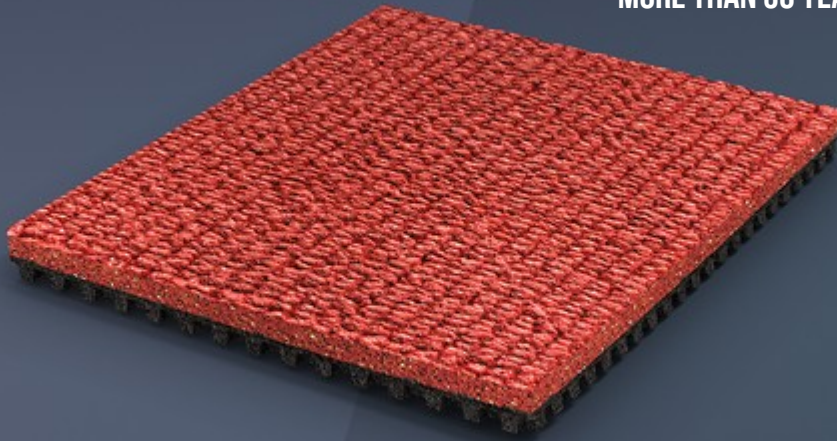


## SUPER X PERFORMANCE™

MORE THAN 30 YEARS ON TOP THE WINNER'S PODIUM.



### WHEN IT COMES TO PREFABRICATED RUBBER TRACKS, SUPER X PERFORMANCE™ HAS A LONG LIST OF WINS.

#### MICROPLASTIC FREE

The surface is free of coatings and partially embedded microplastic granules.



#### CO-VULCANIZED MULTI-LAYER DUAL DUROMETER

Our sport surfaces are made from two layers of solid rubber vulcanized together to form a continuous, seamless surface.



#### AIR-CELL TECHNOLOGY

Air-filled chambers on the bottom layer compress, then expand, acting like bowstrings and projecting athletes up and forward.



## **SUPER X PERFORMANCE™**

As the world's first prefabricated vulcanized rubber track, it is unrivaled.

The result of over 30 years of experience, the surface guarantees optimal athletic performance, combining comfort, safety and durability, for both school and recreational use.

## **TWO LAYERS COMBINE FOR ONE-OF-A-KIND PERFORMANCE**

During a controlled production process, Sportflex Super X™'s two layers are vulcanized together to create a uniform, continuous, joint-free product with truly unique characteristics. Unlike other systems produced, this process creates a molecular bond that prevents the layers separating.

## **PERFORMANCE, COMFORT AND SAFETY: A WINNING COMBINATION.**

The top rubber layer guarantees elasticity and resistance to spikes, while its anti-reflective embossing provides grip, traction and good drainage. The bottom layer has a geometric structure of four-sided air cells that are deformable in two dimensions to provide shock absorption and energy return. This special structure is laid out in the running direction to provide a differentiated biomechanical response according to the pressure produced by the athlete.

## **RESPECT THE ENVIRONMENT**

Per MONDO's quest for environmental sustainability, Sportflex Super X™ is made using up to 37% of recycled post-consumer and post-industrial materials and up to 6% rapidly renewable materials. In its indoor version, Sportflex Super X™ is certified GREENGUARD and GREENGUARD Gold, due to low emissions of VOCs (volatile organic compounds).

## 6 MM

### THICKNESS

6 mm

### WEIGHT

11.0 kg/m<sup>2</sup>

### LENGTH

24m (Min. 6m, Max. 28 m) m

### WIDTH

0.92 - 1.83 cm

## COLOR RANGE



P10 (GR.3)



P14 (GR.3)



P85 (GR.2)



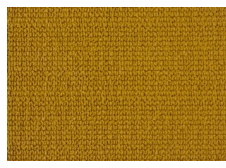
P18 (GR.2)



P31 (GR.2)



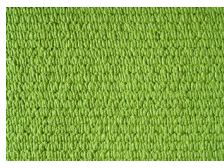
P06 (GR.2)



P58 (GR.1)



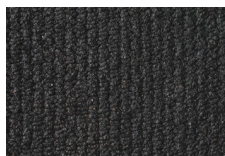
P30 (GR.1)



P123 (GR.4)



P124 (GR.4)



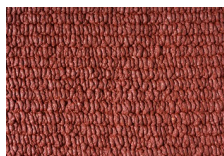
P105 (GR.1)



P125 (GR.4)



P122 (GR.1)



P121 (GR.4)



P115 (GR.3)

**8 MM**

**THICKNESS**

8 mm

**WEIGHT**

7.0 kg/m<sup>2</sup>

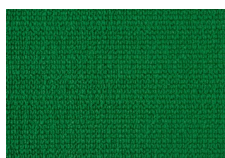
**LENGTH**

15m (Min. 6m, Max. 18 m) m

**WIDTH**

0.92-1.83 m cm

**COLOR RANGE**



P10 (GR.3)



P14 (GR.3)



P85 (GR.2)



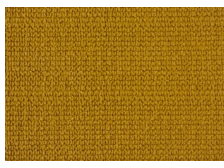
P18 (GR.2)



P31 (GR.2)



P06 (GR.2)



P58 (GR.1)



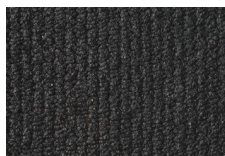
P30 (GR.1)



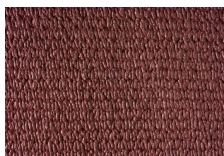
P123 (GR.4)



P124 (GR.4)



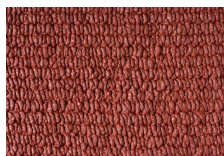
P105 (GR.1)



P125 (GR.4)



P122 (GR.1)



P121 (GR.4)



P115 (GR.3)



## 10 MM

### THICKNESS

10 mm

### WEIGHT

8.5 kg/m<sup>2</sup>

### LENGTH

15m (Min. 6m, Max. 17 m) m

### WIDTH

0.92-1.70 cm

## COLOR RANGE



P10 (GR.3)



P14 (GR.3)



P85 (GR.2)



P18 (GR.2)



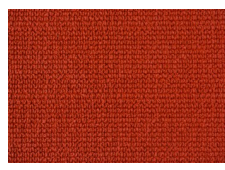
P31 (GR.2)



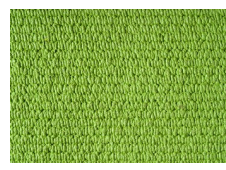
P06 (GR.2)



P58 (GR.1)



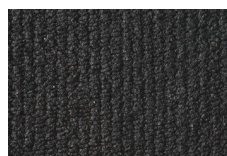
P30 (GR.1)



P123 (GR.4)



P124 (GR.4)



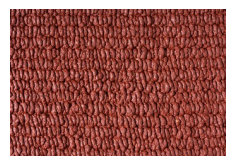
P105 (GR.1)



P125 (GR.4)



P122 (GR.1)



P121 (GR.4)



P115 (GR.3)

**12 MM**

**THICKNESS**

12 mm

**WEIGHT**

9.5 kg/m<sup>2</sup>

**LENGTH**

15m (Min. 6m, Max. 16 m) m

**WIDTH**

0.92-1.70 cm

**COLOR RANGE**



P10 (GR.3)



P14 (GR.3)



P85 (GR.2)



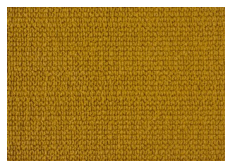
P18 (GR.2)



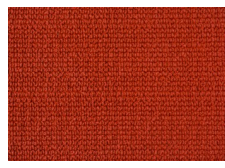
P31 (GR.2)



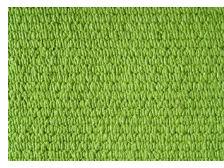
P06 (GR.2)



P58 (GR.1)



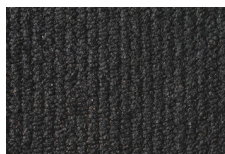
P30 (GR.1)



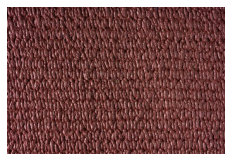
P123 (GR.4)



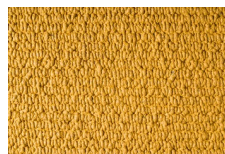
P124 (GR.4)



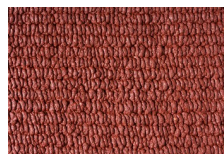
P105 (GR.1)



P125 (GR.4)



P122 (GR.1)



P121 (GR.4)



P115 (GR.3)

## 13.5 MM

### THICKNESS

13,5 mm

### WEIGHT

11.0 kg/m<sup>2</sup>

### LENGTH

15m (Min. 6m, Max. 16 m) m

### WIDTH

0.92-1.70 cm

## COLOR RANGE



P10 (GR.3)



P14 (GR.3)



P85 (GR.2)



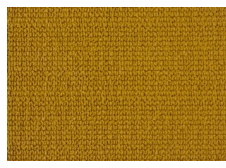
P18 (GR.2)



P31 (GR.2)



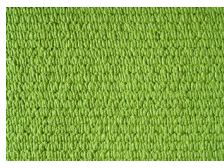
P06 (GR.2)



P58 (GR.1)



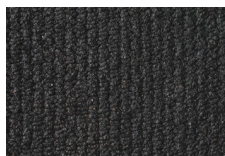
P30 (GR.1)



P123 (GR.4)



P124 (GR.4)



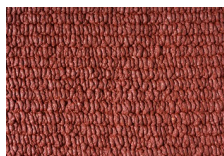
P105 (GR.1)



P125 (GR.4)



P122 (GR.1)



P121 (GR.4)



P115 (GR.3)

## CERTIFICATIONS

Sportflex Super X 13.5mm IAAF Product Certificate