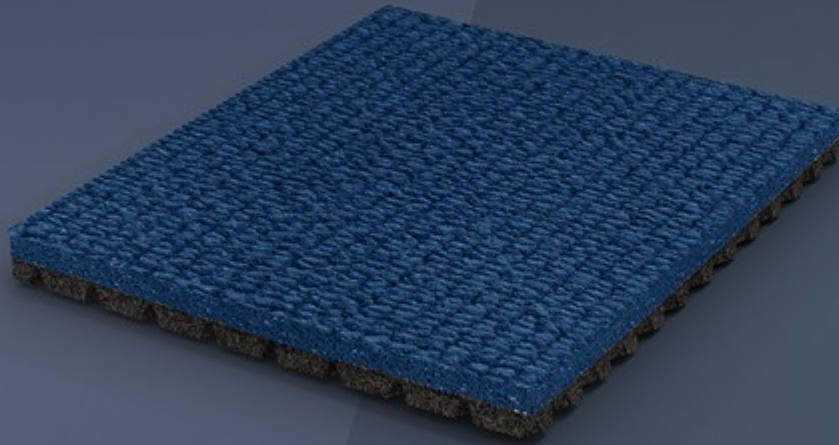


SPORTFLEX SUPER X 720 K37

ATHLETICS ON THE STARTING BLOCKS.



SPORTFLEX SUPER X 720 K37 IS THE IDEAL SURFACE FOR JUNIOR, NON-PROFESSIONAL AND AMATEUR TRACK & FIELD.

MICROPLASTIC FREE

The surface is free of coatings and partially embedded microplastic granules.



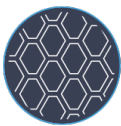
CO-VULCANIZED MULTI-LAYER DUAL DUROMETER

Our sport surfaces are made from two layers of solid rubber vulcanized together to form a continuous, seamless surface.



AIR-CELL TECHNOLOGY

Air-filled chambers on the bottom layer compress, then expand, acting like bowstrings and projecting athletes up and forward.



ELONGATED HONEYCOMB BACKING

Hexagonal air-filled chambers surrounded by ribs that deform in three dimensions on the track underlayment minimize the time the athlete is in contact with the flooring, maximize energy return, and optimize the floor's reaction time.



SPORTFLEX SUPER X 720 K37

University sports centers need comfortable and safe surfaces, suitable for all non-professional athletes and amateurs.

That's why MONDO designed Sportflex Super X 720 K37. It guarantees 37% shock absorption, which is 10% more than the Sportflex Super X (same thickness variant).

Sportflex Super X 720 K37's uniform 12 mm thickness permits the use of spikes up to 9 mm (6 mm compression spikes are recommended).

A WINNING TRADITION.

Pairing Mondotrack's bottom layer and the traditional Sportflex Super X top layer, Sportflex Super X 720 is the perfect combination of comfort and performance.

The rubber-based top layer is characterized by the traditional Sportflex Super X pattern, guaranteeing unrivaled elasticity and great spike resistance. This texture, which has been imitated but never duplicated, ensures excellent grip and traction, and efficient water runoff in the rain.

A TOP-NOTCH LOWER LAYER.

The Super X 720's backing features the same geometrical elongated honeycomb construction as Mondotrack WS.

The hexagonal air cells deform in three dimensions and guarantee the ideal combination of shock absorption and energy storage and return, enhancing the surface's reaction times and reducing athletes' fatigue and risk injury.

RESPECT FOR PERFORMANCE AND THE ENVIRONMENT

Sportflex Super X 720 is one example of MONDO's commitment to environmental sustainability: Made in MONDO's Gallo d'Alba factory, which is powered by a photovoltaic system, it includes up to 38% contaminant-free, recycled post-consumer and post-industrial material, and 10% rapidly renewable materials. Sportflex Super X 720 has GREENGUARD and GREENGUARD Gold certification, due to its minimal volatile organic compound (VOC) emissions and the absence of amines and isocyanates.

SPORTFLEX SUPER X 720 K37 12 MM

THICKNESS

12 mm

WEIGHT

10,5 kg/m²

LENGTH

6÷16 m

WIDTH

122÷160 cm

COLOR RANGE



P10 (GR.3)



P14 (GR.3)



P85 (GR.2)



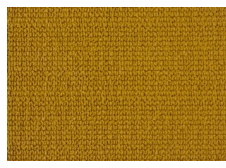
P18 (GR.2)



P31 (GR.2)



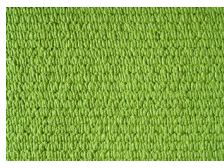
P06 (GR.2)



P58 (GR.1)



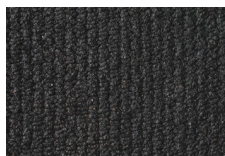
P30 (GR.1)



P123 (GR.4)



P124 (GR.4)



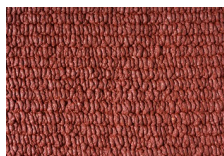
P105 (GR.1)



P125 (GR.4)



P122 (GR.1)



P121 (GR.4)



P115 (GR.3)

CERTIFICATIONS

Super X 720 Greenguard Certification

Super X 720 Greenguard Gold Certification

Super X 720 I Greenguard Certification

Super X 720 I Greenguard Gold Certification