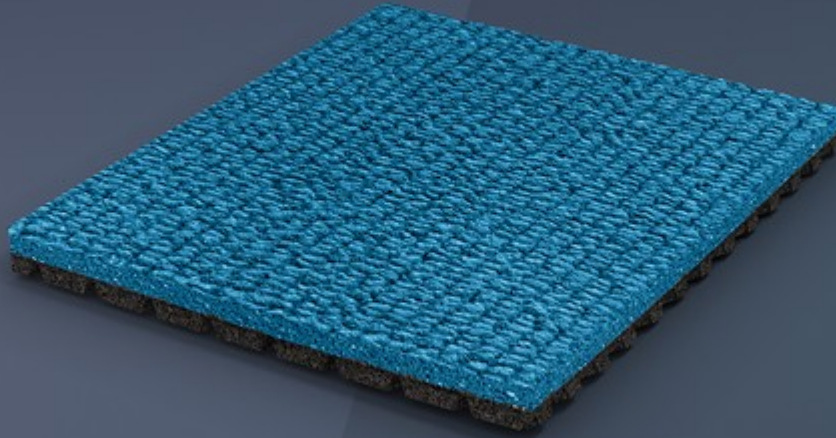


SPORTFLEX SUPER X 720 K37

ATHLETICS ON THE STARTING BLOCKS.



SPORTFLEX SUPER X 720 K37 IS THE IDEAL SURFACE FOR TRACK AND FIELD BEGINNERS BECAUSE IT GUARANTEES MAXIMUM SAFETY AND BALANCED COMFORT LEVELS.



EMBOSSED SOLID-RUBBER TOP LAYER

Vulcanized rubber surface layer with raised embossing for optimal elasticity and grip, and efficient drainage.



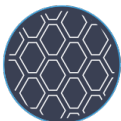
CO-VULCANIZED MULTI-LAYER DUAL DUROMETER

Two different layers of solid rubber with their own formulations, vulcanized together to form a continuous, seamless piece of material.



AIR-CELL TECHNOLOGY

Air-filled chambers on the bottom layer compress, then expand, acting like bowstrings and projecting athletes up and forward.



ELONGATED HONEYCOMB BACKING

Hexagonal air-filled chambers surrounded by ribs that deform in three dimensions on the track underlayment minimize the time the athlete is in contact with the flooring, maximize energy return, and optimize the floor's reaction time.

SPORTFLEX SUPER X 720 K37

Schools and other facilities for amateur athletes need comfortable, safe surfaces that are suited to track and field novices and for those practicing or training at school or for pleasure.

That's why MONDO designed Sportflex Super X 720 K37. It guarantees 37% shock absorption, which is 10% more than the Sportflex Super X (same thickness variant).

Sportflex Super X 720 K37's uniform 12.5 mm thickness permits the use of spikes up to 9 mm (6 mm compression spikes are recommended), and it can be installed in the central part of facilities for multisport surfaces and team competitions.

Sportflex Super X 720 K37 is also suitable, as an alternative to Sportflex Super X 720 K39, for those portions of indoor athletic facilities that are over a permanent, portable or removable steel/plywood structure, as those areas benefit from the sprung effect supplied by the structure underneath.

A WINNING TRADITION.

Pairing Mondotrack's bottom layer and the traditional Sportflex Super X top layer, Sportflex Super X 720 is the perfect combination of comfort and performance.

The rubber-based top layer is characterized by the traditional Sportflex Super X pattern, guaranteeing unrivaled elasticity and great spike resistance. This texture, which has been imitated but never duplicated, ensures excellent grip and traction, and efficient water runoff in the rain.

A TOP-NOTCH LOWER LAYER.

The Super X 720's backing features the same geometrical elongated honeycomb construction as Mondotrack WS.

The hexagonal air cells deform in three dimensions and guarantee the ideal combination of shock absorption and energy storage and return, enhancing the surface's reaction times and reducing athletes' fatigue and risk injury.

RESPECT FOR PERFORMANCE AND THE ENVIRONMENT

Sportflex Super X 720 is one example of MONDO's commitment to environmental sustainability: Made in MONDO's Gallo d'Alba factory, which is powered by a photovoltaic system, it includes up to 38% contaminant-free, recycled post-consumer and post-industrial material, and 10% rapidly renewable materials. Sportflex Super X 720 has GREENGUARD and GREENGUARD Gold certification, due to its minimal volatile organic compound (VOC) emissions and the absence of amines and isocyanates.

DIMENSIONS

THICKNESS WEIGHT ROLL LENGTH

12 mm 10,5 kg/m² 49'2" [min. 19'8"; max. 52'5"] (15 m [min. 6 m; max. 16 m])

ROLL WIDTH

4' to 5'3" (1.22 m to 1.60 m)

I / VERSION

THICKNESS WEIGHT ROLL LENGTH

12 mm 10,5 kg/m² 49'2" [min. 19'8"; max. 52'5"] (15 m [min. 6 m; max. 16 m])

ROLL WIDTH

4' to 5'3" (1.22 m to 1.60 m)

COLOR RANGE

INDOOR&OUTDOOR



P30



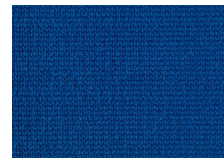
P58



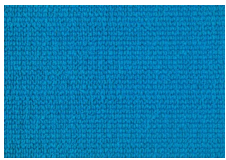
P10



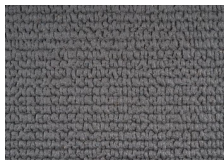
P14



P18



P85



P06



P31

CERTIFICATIONS

Super X 720 Greenguard Certification

Super X 720 I Greenguard Certification

Super X 720 I Greenguard Gold Certification
