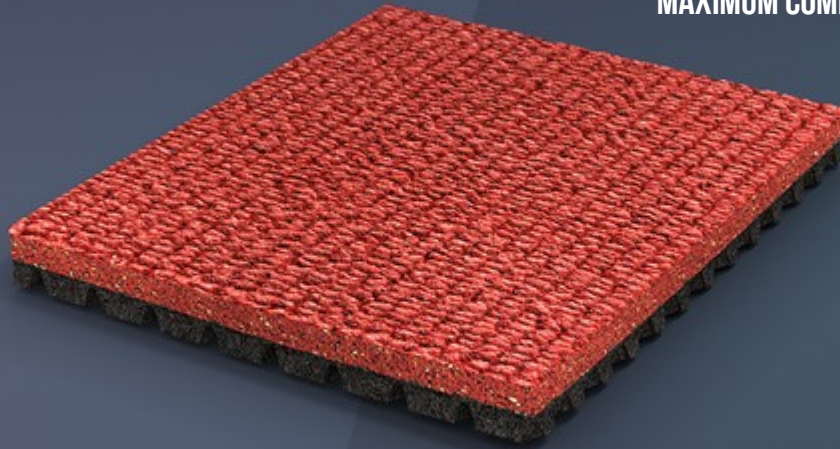


# SPORTFLEX SUPER X 720 K39

MAXIMUM COMFORT AND OPTIMAL PERFORMANCE.



**SPORTFLEX SUPER X 720 K39 IS THE IDEAL SURFACE FOR FACILITIES DEDICATED TO BOTH COMPETITION AND TRAINING BECAUSE IT GUARANTEES ATHLETES THE PERFECT COMBINATION OF SHOCK ABSORPTION, VERTICAL DEFORMATION AND ENERGY RETURN.**



#### **EMBOSSSED SOLID-RUBBER TOP LAYER**

Vulcanized rubber surface layer with raised embossing for optimal elasticity and grip, and efficient drainage.



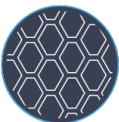
#### **CO-VULCANIZED MULTI-LAYER DUAL DUROMETER**

Two different layers of solid rubber with their own formulations, vulcanized together to form a continuous, seamless piece of material.



#### **AIR-CELL TECHNOLOGY**

Air-filled chambers on the bottom layer compress, then expand, acting like bowstrings and projecting athletes up and forward.



#### **ELONGATED HONEYCOMB BACKING**

Hexagonal air-filled chambers surrounded by ribs that deform in three dimensions on the track underlayment minimize the time the athlete is in contact with the flooring, maximize energy return, and optimize the floor's reaction time.

## SPORTFLEX SUPER X 720 K39

The vulcanized, prefabricated structure of Sportflex Super X 720 K39 ensures uniform dynamic response across the entire track, providing optimal control over stride length. It's the perfect solution for areas of facilities dedicated to conventional training and competition because it guarantees a shock absorption coefficient of 39% and meets IAAF performance criteria.

Sportflex Super X 720 K39 has a uniform thickness of 13.5 mm and is compatible with shoes with spikes up to 12 mm (6 mm and 9 mm compression spikes recommended).

### A WINNING TRADITION.

Pairing Mondotrack's bottom layer and the traditional Sportflex Super X top layer, Sportflex Super X 720 is the perfect combination of comfort and performance.

The rubber-based top layer is characterized by the traditional Sportflex Super X pattern, guaranteeing unrivaled elasticity and great spike resistance. This texture, which has been imitated but never duplicated, ensures excellent grip and traction, and efficient water runoff in the rain.

### A TOP-NOTCH LOWER LAYER.

The Super X 720's backing features the same geometrical elongated honeycomb construction as Mondotrack WS.

The hexagonal air cells deform in three dimensions and guarantee the ideal combination of shock absorption and energy storage and return, enhancing the surface's reaction times and reducing athletes' fatigue and risk injury.

## RESPECT FOR PERFORMANCE AND THE ENVIRONMENT

Sportflex Super X 720 is one example of MONDO's commitment to environmental sustainability: Made in MONDO's Gallo d'Alba factory, which is powered by a photovoltaic system, it includes up to 38% contaminant-free, recycled post-consumer and post-industrial material, and 10% rapidly renewable materials. Sportflex Super X 720 has GREENGUARD and GREENGUARD Gold certification, due to its minimal volatile organic compound (VOC) emissions and the absence of amines and isocyanates.

## DIMENSIONS

### THICKNESS

13,5 mm

### WEIGHT

12.0 kg/m<sup>2</sup>

### LENGTH

6÷15 m

### WIDTH

122÷160 cm

### I / VERSION

### THICKNESS

13,5 mm

### WEIGHT

12.0 kg/m<sup>2</sup>

### LENGTH

6÷15 m

### WIDTH

122÷160 cm

## COLOR RANGE

### INDOOR&OUTDOOR



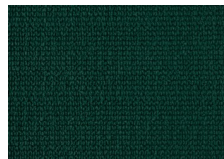
P30



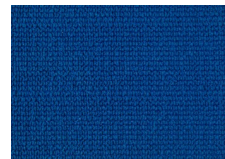
P58



P10



P14



P18



P85



P06



P31

## CERTIFICATIONS

**Sportflex Super X 720 13.5mm IAAF Product Certificate**

---

**Super X 720 Greenguard Certification**

---

**Super X 720 Greenguard Gold Certification**

---

**Super X 720 I Greenguard Certification**

---

**Super X 720 I Greenguard Gold Certification**

---