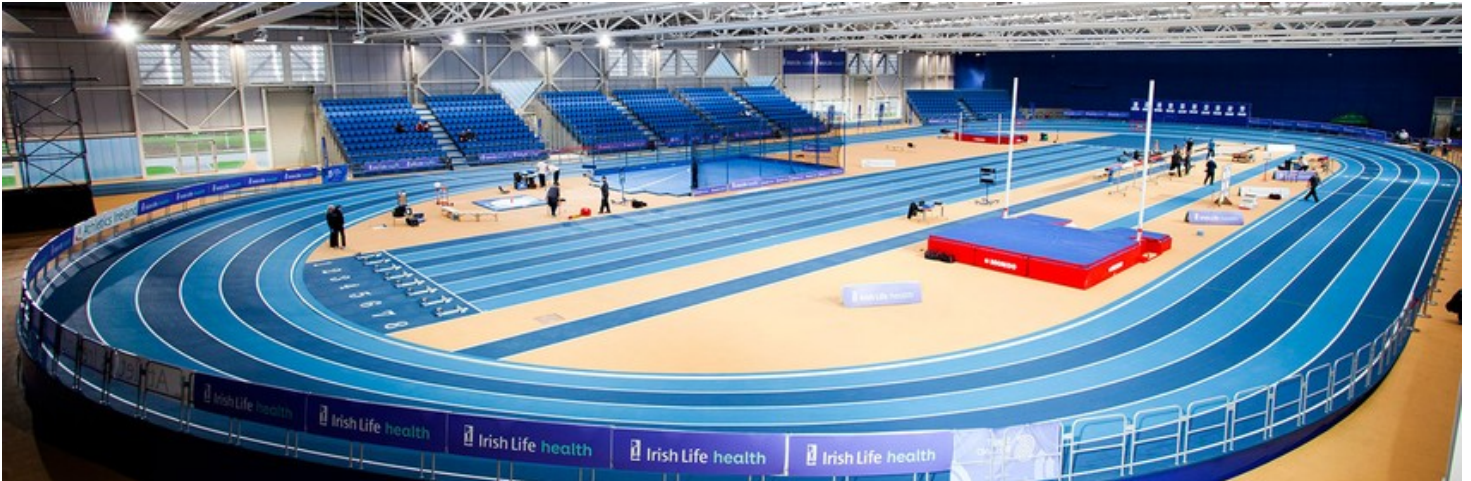


# VARIABLE HYDRAULIC BANKING TRACKS

INNOVATION AND PRESTIGE RUN TOGETHER



**MODULTRACK'S VARIABLE HYDRAULIC BANKING TRACKS ARE UNIQUE BECAUSE THEY ARE CONTROLLED USING AN INNOVATIVE PLC (PROGRAMMABLE LOGIC CONTROL) SYSTEM FOR EASE OF USE AND OPTIMAL CURVE PROGRESSION AT EVERY INCLINE.**

MONDO was the first to produce a variable hydraulic banking track. This unique system was installed for the first time in 1987 at the National Institute for Fitness and Sport in Indianapolis, Indiana, and is now used at fine training and high-level competition centers.

MONDO produces the only commercially available variable banking tracks with a hydraulic system. With the push of a button, the track's curves can be raised to the desired height in minutes for competitions or training sessions. Once lowered, the track is flush with the surrounding surface and the entire area can be used for other sports or activities. The ease of use in setting any desired incline makes the product extremely versatile. Every athlete, from beginners to world-class runners, can benefit from this track. [Watch how a variable banking track with an hydraulic system works in this video!](#)

## CURVES THAT MEET THE HIGHEST EXPECTATIONS

With the push of a button, the track's curves can be raised to the desired height in minutes for competitions or training sessions. The hydraulically controlled tracks can be set at any intermediate position, making them ideal for all kinds of training activities by athletes of any level. MONDO defines the curve radius, the lateral incline and the horizontal and vertical transitions between straightaways and curves based on the most advanced biomechanical research and on its unbeatable experience in high-level competitions. Once lowered, the track is flush with the surrounding surface and the entire area can be used for other sports or activities, gaining additional space with the removal (and storage on custom-made carts) of the modular railing around the external perimeter.

## MONDOTRACK WS 13.5 MM I / VERSION

### I / VERSION

#### THICKNESS

13,5 mm

#### WEIGHT

12,6 kg/m<sup>2</sup>

#### LENGTH

6÷15 m

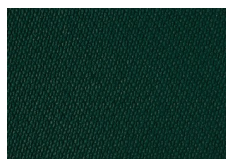
#### WIDTH

122÷160 cm

### COLOR RANGE



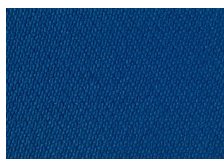
P10 (GR.3)



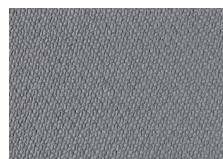
P14 (GR.3)



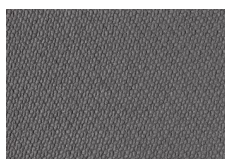
P85 (GR.2)



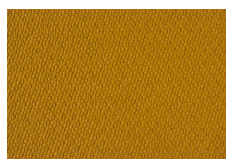
P18 (GR.2)



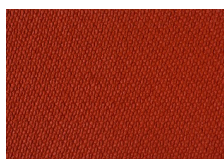
P31 (GR.2)



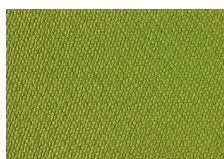
P06 (GR.2)



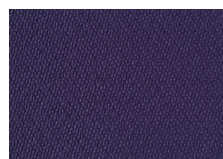
P58 (GR.1)



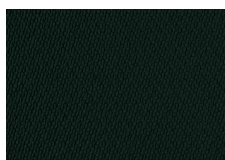
P30 (GR.1)



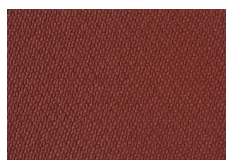
P123 (GR.3)



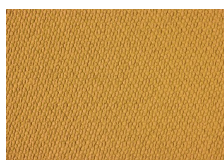
P124 (GR.3)



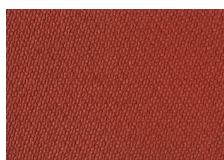
P105 (GR.1)



P125 (GR.3)



P122 (GR.1)



P121 (GR.3)



P115 (GR.3)

## SPORTFLEX SUPER X 720 K39 13.5 MM I / VERSION

### I / VERSION

#### THICKNESS

13,5 mm

#### WEIGHT

12.0 kg/m<sup>2</sup>

#### LENGTH

6÷15 m

#### WIDTH

122÷160 cm

### COLOR RANGE



P10 (GR.3)



P14 (GR.3)



P85 (GR.2)



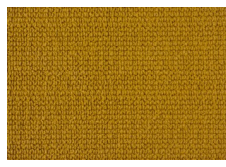
P18 (GR.2)



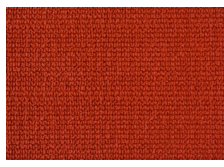
P31 (GR.2)



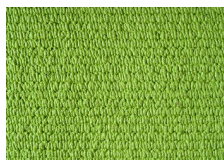
P06 (GR.2)



P58 (GR.1)



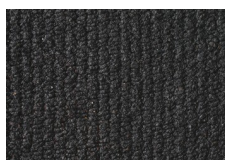
P30 (GR.1)



P123 (GR.4)



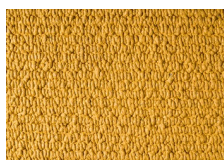
P124 (GR.4)



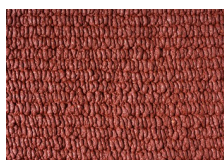
P105 (GR.1)



P125 (GR.4)



P122 (GR.1)



P121 (GR.4)



P115 (GR.3)