

# PORTABLE BANKED TRACKS

VERSATILITY AND PERFORMANCE



**ALL OF MONDO'S MODULTRACK SOLUTIONS ARE DESIGNED WITH FULLY ADJUSTABLE STRUCTURES TO GUARANTEE QUICK ASSEMBLY AND COMPLIANCE WITH INTERNATIONAL REGULATIONS, EVEN WHEN THE SUPPORTING SURFACE IS NOT STATE-OF-THE-ART.**

The world's first portable banked Modultrack was installed in 1984 at the World Memorial Hall in Kobe, Japan.

## EASY INSTALLATION FOR MAXIMAL PERFORMANCE

With its claw-locking mechanism, the structure's frame can be assembled and disassembled quickly and easily with no screws or bolts, guaranteeing consistent tightness and perfect dimensional accuracy, installation after installation. The process can be completed in a few short days. Once disassembled, the track is easily stored in a warehouse and the entire area can be used for other purposes.

## MONDOTRACK WS 13.5 MM I / VERSION

### I / VERSION

#### THICKNESS

13,5 mm

#### WEIGHT

12,6 kg/m<sup>2</sup>

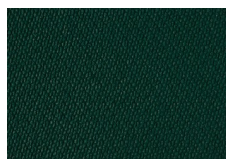
#### ROLL LENGTH

#### ROLL WIDTH

### COLOR RANGE



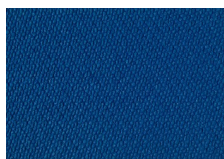
P10 (GR.3)



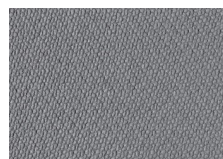
P14 (GR.3)



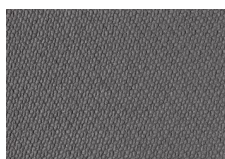
P85 (GR.2)



P18 (GR.2)



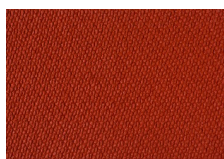
P31 (GR.2)



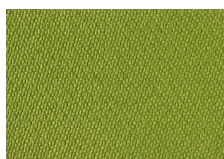
P06 (GR.2)



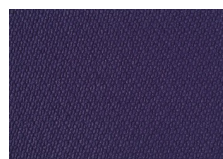
P58 (GR.1)



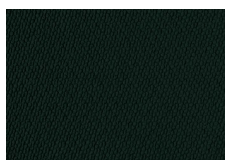
P30 (GR.1)



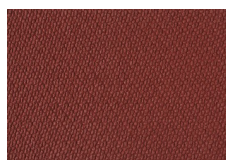
P123 (GR.3)



P124 (GR.3)



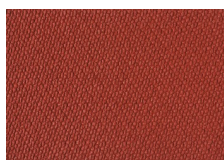
P105 (GR.1)



P125 (GR.3)



P122 (GR.1)



P121 (GR.3)



P115 (GR.3)

## SUPER X 720 K39 13.5 MM I / VERSION

### I / VERSION

#### THICKNESS

13,5 mm

#### WEIGHT

12.0 kg/m<sup>2</sup>

#### ROLL LENGTH

min 10 m / max 15

#### ROLL WIDTH

122-160

### COLOR RANGE



P10 (GR.3)



P14 (GR.3)



P85 (GR.2)



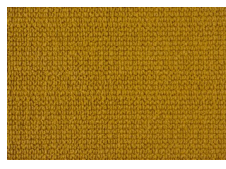
P18 (GR.2)



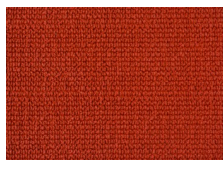
P31 (GR.2)



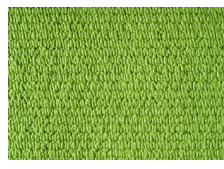
P06 (GR.2)



P58 (GR.1)



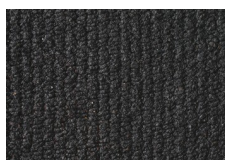
P30 (GR.1)



P123 (GR.4)



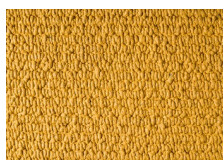
P124 (GR.4)



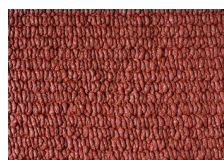
P105 (GR.1)



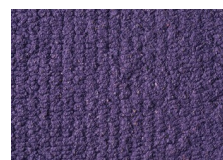
P125 (GR.4)



P122 (GR.1)



P121 (GR.4)



P115 (GR.3)