

PERMANENT BANKED TRACKS

TRACK AND FIELD REACHES NEW HEIGHTS



MODULTRACK PERMANENT TRACKS ARE FULLY COUPLED FOR EASE OF ASSEMBLY, TRANSPORTATION AND DIMENSIONAL ACCURACY OVER TIME. UNLIKE CONCRETE PERMANENT SOLUTIONS, THESE TRACKS CAN BE ASSEMBLED IN JUST A FEW DAYS, WITH NO NEED TO WAIT FOR THE FLOOR SCREED TO DRY.

In 1980, MONDO installed the first permanent Modultrack banked track at the Palazzo a Vela in Turin.

Compared with traditional concrete structures, these tracks offer fast assembly and dimensional accuracy over time. They can be assembled in a few short days, and can be quickly disassembled and recycled as well.

MONDOTRACK WS 13.5 MM I / VERSION

I / VERSION

THICKNESS

13,5 mm

WEIGHT

12,6 kg/m²

LENGTH

6÷15 m

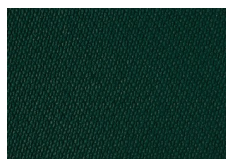
WIDTH

122÷160 cm

COLOR RANGE



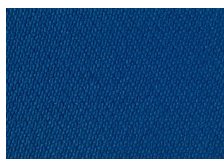
P10 (GR.3)



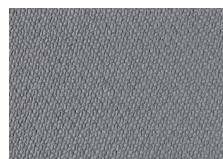
P14 (GR.3)



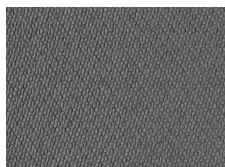
P85 (GR.2)



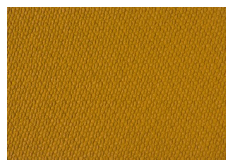
P18 (GR.2)



P31 (GR.2)



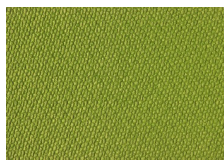
P06 (GR.2)



P58 (GR.1)



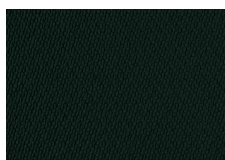
P30 (GR.1)



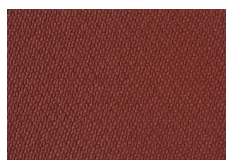
P123 (GR.3)



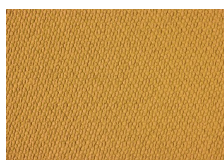
P124 (GR.3)



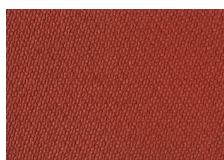
P105 (GR.1)



P125 (GR.3)



P122 (GR.1)



P121 (GR.3)



P115 (GR.3)

SPORTFLEX SUPER X 720 K39 13.5 MM I / VERSION

I / VERSION

THICKNESS

13,5 mm

WEIGHT

12.0 kg/m²

LENGTH

6÷15 m

WIDTH

122÷160 cm

COLOR RANGE



P10 (GR.3)



P14 (GR.3)



P85 (GR.2)



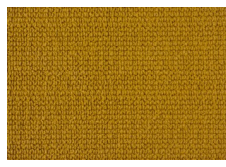
P18 (GR.2)



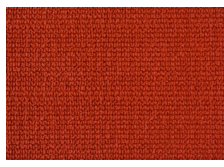
P31 (GR.2)



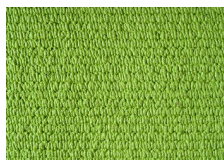
P06 (GR.2)



P58 (GR.1)



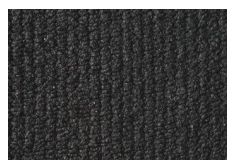
P30 (GR.1)



P123 (GR.4)



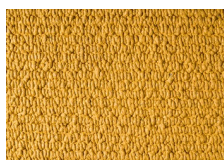
P124 (GR.4)



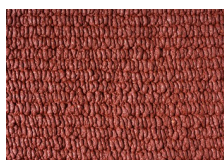
P105 (GR.1)



P125 (GR.4)



P122 (GR.1)



P121 (GR.4)



P115 (GR.3)