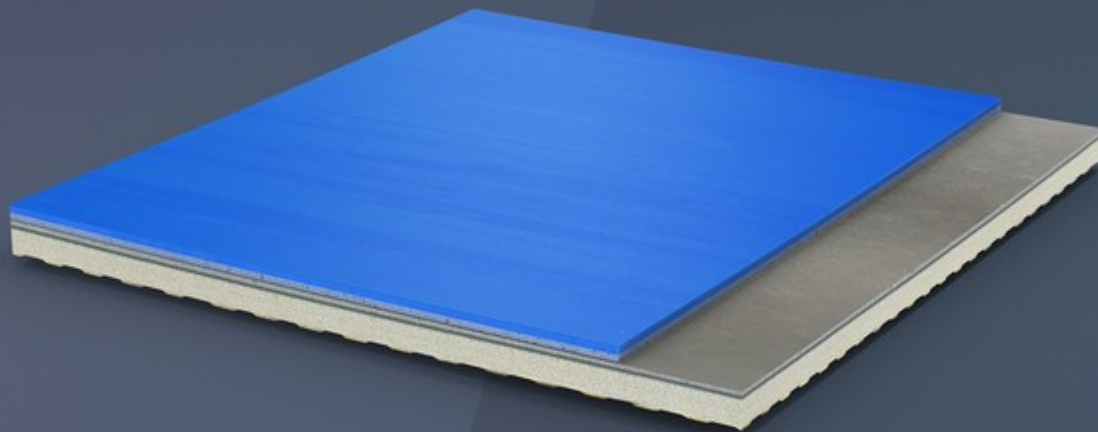


# POWERPLAY COMBINED WITH EVERLAY® UNDERLAYMENTS

EXTRA LONG-LASTING AND MULTI-SPORTS



**POWERPLAY™ IS A VULCANISED RUBBER SPORTS FLOORING, IDEAL FOR MULTI-SPORT GYMS.**

THE POWERPLAY™ RUBBER FLOORING IS LAID TOGETHER WITH WATERPROOFING AND CUSHIONING UNDERLAYMENTS FROM THE EVERLAY® RANGE. THIS PROVIDES COMPLETE INSULATION FROM RISING DAMP AND THE FLOORING SYSTEM CAN BE LAID WITHOUT HAVING TO BE BONDED TO THE BASE LAYER.



## SMOOTH SOLID RUBBER TOP LAYER

The vulcanized rubber top layer has a smooth finish and optimal grip with no need for additional finishes or surface coatings. The surface is durable and highly resistant to wear and tear. Our rubber top layer is available in many different colors, including colors that mimic the look of real hardwood.



## MULTILAYER CONCEPT

The system is assembled by arranging layers of varying composition and elasticity on-site. Thanks to the combination of elastic under layer and surface finish, the system is able to respond specifically to the requirements of each sport, even in the event of intensive use and in multipurpose facilities.

## POWERPLAY COMBINED WITH EVERLAY® UNDERLAYMENTS

The balls bounce evenly over the entire playing surface thanks to the lack of connecting parts or seams between the rubber rolls that make up the surface layer and to the even elastic response that is ensured by the combination with the Everlay® underlayments.

Different Everlay® underlayment thicknesses are available; this provides a range of solutions for EN14904 standard categories P1 and P2 for flooring systems with differentiated impact absorption values.

### POWERPLAY P1, KA 25%

Powerplay™ P1 is a flooring system that consists in combining, during the installation phase, a Powerplay™ flooring with a stabilising and shock-absorbing Everlay® Protection sublayer.

This system can be loose-lay fitted and provides shock absorption values between 25% and 34% (Category P1 according to EN14904 standard). This ensures athlete comfort and safety. Powerplay™ P1 is certified in laboratory conditions according to the "FIFA QUALITY PROGRAMME FOR FUTSAL SURFACES - FIFA QUALITY" standards criteria.

Powerplay™ combined with Everlay® Protection ensures both a uniform impact absorption during the landing phase as well as an optimal grip during a pivot or a change of direction. This guarantees optimal safety conditions during play for all athletes including non-professionals and young sportsmen.

### POWERPLAY P2, KA 35%

Powerplay™ P2 is a flooring system that consists in combining, during the installation phase, a Powerplay™ flooring with a stabilising and shock-absorbing Everlay® High Protection sublayer.

This system can be loose-lay fitted and provides shock absorption values between 35% and 45% (Category P2 according to EN14904 standard).

Powerplay™ combined with Everlay® High Protection ensures excellent impact absorption over the entire surface and during pivots or direction changes. This ensures the best safety and performance conditions during matches and training.

## POWERPLAY: GAME QUALITY THAT LASTS OVER TIME

The material's compactness and durability is given by the rubber vulcanisation process that slows down the hardening process that is typical of other synthetic materials.

Therefore, choosing Powerplay™ implies having a sports surface that will retain its biomechanical characteristics for much longer.

Fitting prefabricated vulcanised rubber flooring does not require using any thermal sealing: this eliminates all joints, which are the first parts to be damaged by wear.

Combining Powerplay™ with Everlay® underlayments also provides loose-laying that doesn't require any bonding to the base layer: the flooring ages more slowly because it is not constrained by chemical binders and is protected from rising damp problems.

Powerplay™ offers a wide range of colours that allow vivid and neutral tone combinations and match solid and marbled colours thus creating new aesthetic impact effects.

## RUBBER FLOORING: A VICTORY FOR THE ENVIRONMENT AND FOR THE ATHLETES' HEALTH

Powerplay™ is designed to be an environmentally responsible sports flooring.

25% of the organic polymers in its formulation come from bio-mass: natural rubber is in fact a product that is not derived from petroleum and has a less than 10 years collection cycle. This makes it a rapidly renewable material.

Powerplay™ contains more than 10% pre-consumer, contaminant-free, non-tire recovered raw materials and is produced in the Gallo d'Alba (Italy) plant that is powered by a photovoltaic system. In fact, none of the substances that are in the Powerplay™ formulation are included in the REACH list of substances of very high concern due to the hazard caused to humans and the environment.

MONDO has chosen to certify the sustainability of its Powerplay™ rubber flooring for indoor sports facilities with an [Environmental Product Declaration](#) (EPD) so that its environmental impact is effectively documented throughout its entire life cycle.

This document is based on a LCA (Life Cycle Assessment) study and has been drafted by external and independent technicians. It provides the consumption of resources (materials, water, energy) and the impact that the various phases of the product's life cycle have on the surrounding environment in a complete, accurate, verifiable and unambiguous manner.

Powerplay™ is not only environmentally responsible: it's a product that safeguards the health of the athletes and sport lovers who use it.

It has been awarded the Greenguard Gold certification because of its extremely low emissions of volatile organic compounds (VOCs), thus it reduces the amount of air pollutants and helps to [improve air quality in sports facilities](#).

Like all MONDO vulcanised rubber floorings, also Powerplay™ has a compact, waterproof and non-porous structure: it does not absorb liquids, perspiration and dirt. Therefore, no moisture remains on the surface and dirt is easily removed: indeed bacteria find their main nourishment in dirt and this hinders them from proliferating.

The surface layer is compact and made of vulcanised rubber (not made of compressed rubber crumb) and has itself excellent natural antibacterial characteristics, without any need to add biocide ingredients to its formulation: tests carried out according to the ISO 22196 standard confirm that the reduction of inoculated bacteria on the Powerplay™ surface exceeds 99.999% within 24 hours (antimicrobial activity factor "R" greater than 5).

Therefore these features make routine Powerplay™ flooring cleaning and sanitising simple and effective, and keep the sports facility hygienically safe for its users.

## POWERPLAY 8 MM

### COLOR RANGE



AC61 MAPLE



AC62 OAK



AC25 ROYAL BLUE



AC28 BLUE GRAY



AC23 OCEAN BLUE



AC10 GRASS GREEN



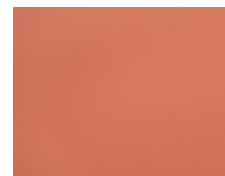
AC17 LIME



AC08 GOLD



AC40 ORANGE



AC41 PINK



AC30 RED



AC34 MAHOGANY



AC26 GREY



AC71 DARK



AC00 BLACK

## POWERPLAY 10.8 MM

### COLOR RANGE



AC61 MAPLE



AC62 OAK



AC25 ROYAL BLUE



AC28 BLUE GRAY



AC23 OCEAN BLUE



AC10 GRASS GREEN



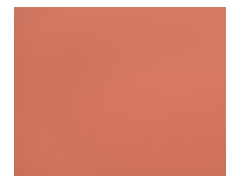
AC17 LIME



AC08 GOLD



AC40 ORANGE



AC41 PINK



AC30 RED



AC34 MAHOGANY



AC26 GREY



AC71 DARK



AC00 BLACK

### CERTIFICATIONS

FIBA Certificate of Approval for Synthetic Flooring Category, Competition Level 2

---

IHF Certificate of Approval for Synthetic Floorings

---

Powerplay Greenguard Certification

---

Powerplay Greenguard Gold Certification

---

Powerplay II Greenguard Certification

---

Powerplay II Greenguard Gold Certification

---