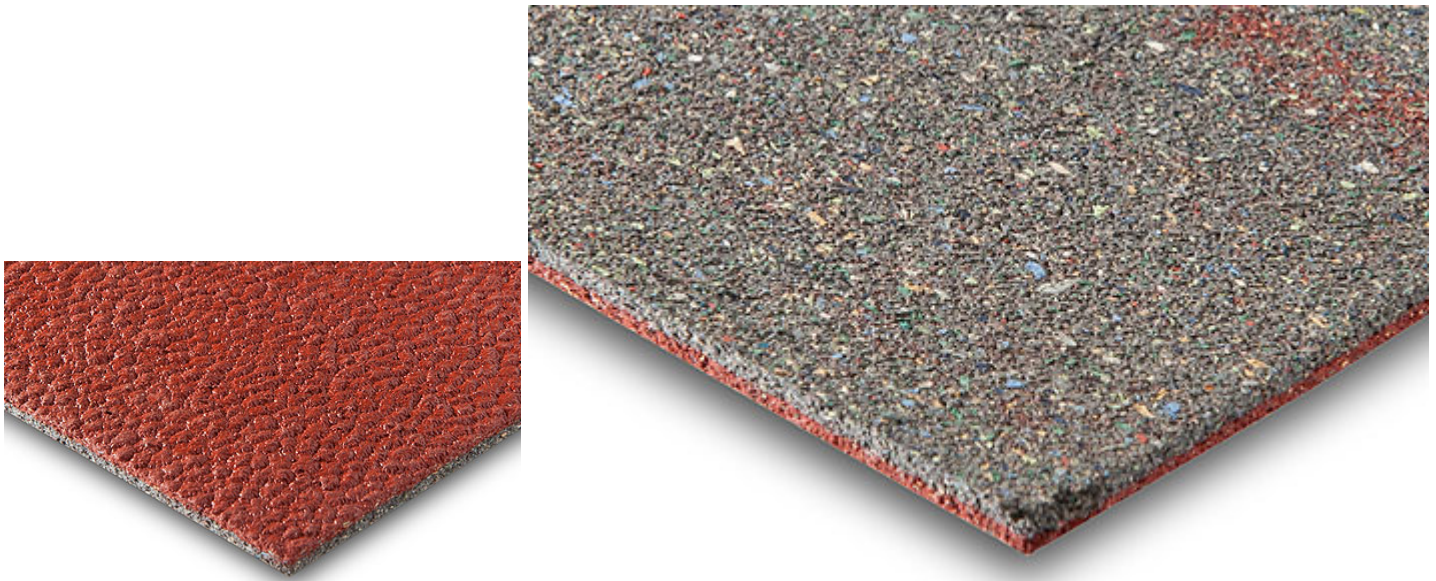


# SPORTFLEX SEALSKIN EMBOSSING

SPORTS FLOORING FOR MULTIPURPOSE OUTDOOR AREAS



Sportflex Sealskin Embossing is specifically designed to provide the **optimum blend of slip resistance, ball bounce, comfort and safety for all outdoor tennis and multipurpose applications.**

## SEAMLESS VULCANIZED CONSTRUCTION

**Sportflex Sealskin Embossing is a prefabricated synthetic rubber tennis and multisport surface, made up of two layers – each with its own specific characteristics – which are then vulcanized to produce a continuous and seamless product.**

In contrast to other systems that are poured in situ, this process creates a molecular bond that eliminates the risk of later separation or delamination of the layers.

## SLIDING AND PIVOT MOVEMENTS

**The rubber-based top layer is specifically engineered to accommodate sports requiring sliding and pivot movements.** The non-reflecting texture improves ball bounce for tennis applications.

**The bottom layer** consists of a waffle-shaped geometric construction, deformable in two dimensions, that **provides cushioning and energy return.**

## EASY TO CLEAN AND REPAIR

Sportflex Sealskin Embossing is free of surface coatings and loose granules that might compromise traction and make the material difficult to clean.

Sections of material can be easily replaced with identical material and a virtually invisible seam.

## IMPROVED RESISTANCE TO WEATHERING

Thanks to the innovative new formulation, the oxidation resistance (Oxidation Induction Time) of Sportflex Sealskin Embossing has increased by an average of 200%.

We believe that this will translate to a substantial improvement of the material's resistance to weathering, and will provide superior protection against unpredicted climate changes and the increased risk of extreme weather.

## FOCUS ON SUSTAINABILITY

As part of Mondo's commitment to sustainability, the product includes up to 43% of post-consumer and post-industrial recycled materials, and 6% of rapidly renewable materials.

## DIMENSIONS

### THICKNESS

4,5 mm

### WEIGHT

5,2 kg/m<sup>2</sup>

### LENGTH

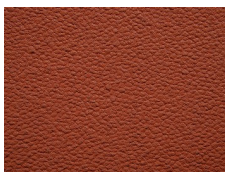
10 ÷ 25 m

### WIDTH

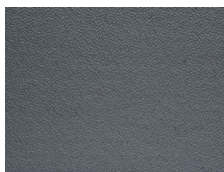
170 ÷ 183 cm

---

## COLOR RANGE



T30



T31



T70

## CERTIFICATIONS

Sportflex Greenguard Certification

---

Sportflex Greenguard Gold Certification

---