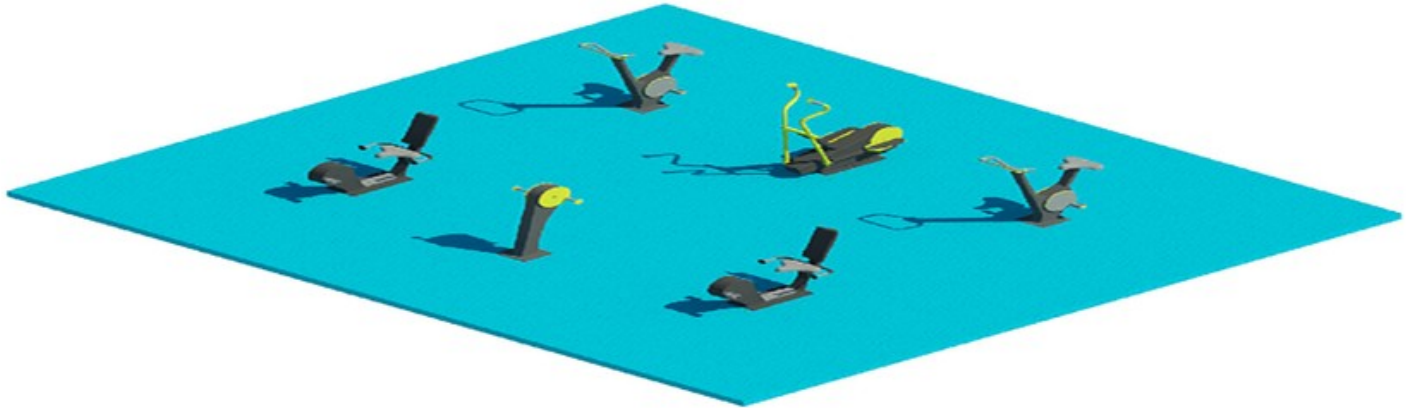


## MODULE CARDIO MIX 6 EQUIPMENT



This module has been designed for cardio-fitness and is aimed at those who want to improve their physical fitness through aerobic exercise. It's a perfect choice for all ages and abilities.

### CONTEXT

Sports equipment does not have to be moved to accommodate this configuration, so this module can be placed in supervised or unsupervised areas.

### DIMENSIONS

Minimum recommended dimensions of the module, including safety areas: 8.10 m x 7.30 m.