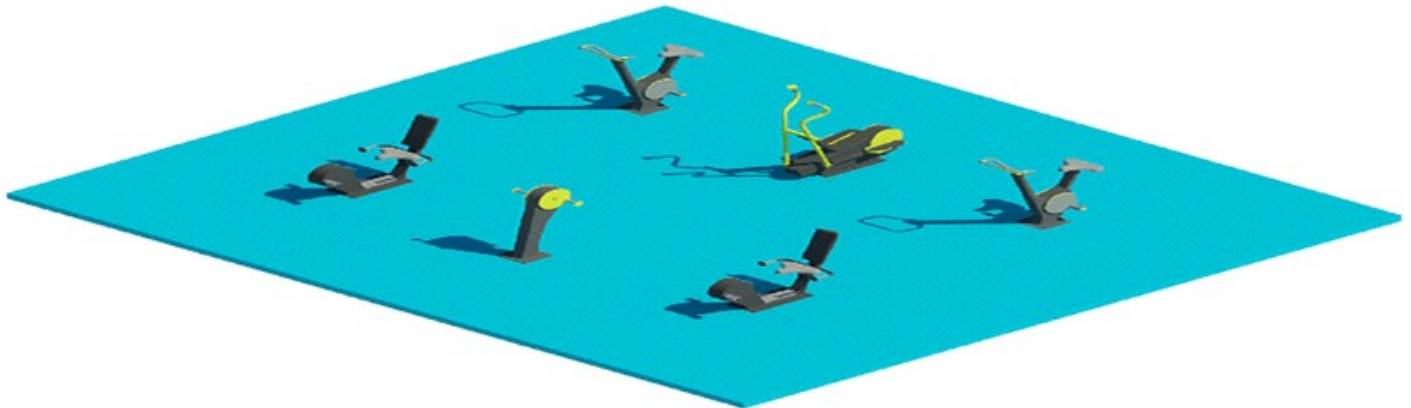


MODULE CARDIO MIX 6 EQUIPMENT



This module has been designed for cardio-fitness and is aimed at those who want to improve their physical fitness through aerobic exercise. It's a perfect choice for all ages and abilities.

CONTEXT

Sports equipment does not have to be moved to accommodate this configuration, so this module can be placed in supervised or unsupervised areas.

DIMENSIONS

Minimum recommended dimensions of the module, including safety areas: 8.10 m x 7.30 m.