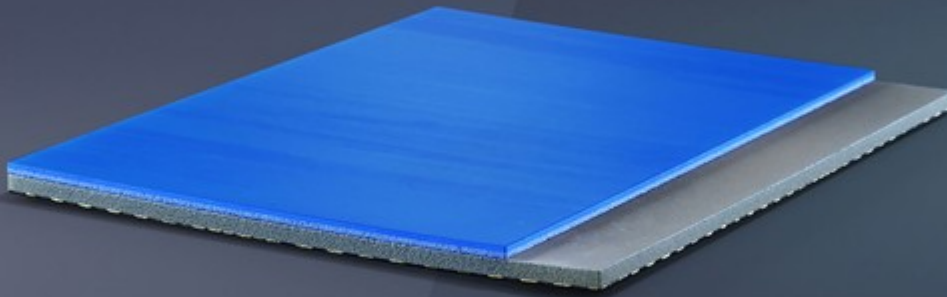


# MONDOFLEX ± EVERLAY® PROTECTION

A SYNTHETIC SURFACE FOR NATURAL PLAY



**THIS SYSTEM PAIRS MONDOFLEX RUBBER FLOORING WITH EVERLAY PROTECTION, AN UNDERLAYMENT WITH SUPERIOR STABILIZATION AND SHOCK ABSORPTION. IT CAN BE LAID LOOSE AND GUARANTEES SHOCK ABSORPTION VALUES OF BETWEEN 25% AND 34% (CATEGORY P1 ACCORDING TO STANDARD EN14904) TO ENSURE ATHLETES' COMFORT AND SAFETY.**



## SMOOTH SOLID RUBBER TOP LAYER

The vulcanized rubber top layer has a smooth finish and optimal grip with no need for additional finishes or surface coatings. The surface is durable and highly resistant to wear and tear. Our rubber top layer is available in many different colors, including colors that mimic the look of real hardwood.



## MULTILAYER CONCEPT

The system is assembled by arranging layers of varying composition and elasticity on-site. Thanks to the combination of elastic under layer and surface finish, the system is able to respond specifically to the requirements of each sport, even in the event of intensive use and in multipurpose facilities.



## MONDOFLEX ± EVERLAY® PROTECTION

The combination of Mondoflex and Everlay Protection is the best synthetic flooring for training and competition for players of all levels. The system guarantees excellent impact absorption during landing and optimal grip for pivoting and making sudden changes in direction. Everlay laminate has no joints in the rubber surface layer and guarantees uniform elastic response, so that ball bounce is the same everywhere on the game surface.

With its ideal combination of surface grip and playing comfort, Mondoflex and Everlay Protection provide excellent ball control and reaction speed, which are essential in futsal. The smooth, slip-proof and anti-reflective finish guarantees perfect ball rolling while the shock absorbing underlayer ensures safety and uniform stability for foot rotations.

In volleyball, a spike or a block can mean the difference between victory and defeat. For this reason, playing on a surface that is able to absorb the energy from a jump and provide a high level of playing comfort throughout the entire match is essential. The combination of Mondoflex + Everlay Protection, recommended for installation on wood substrates, is the ideal base for years of adrenaline-filled competitions and challenges.

Handball has a storied history, but every match is an occasion to write a new page. Mondoflex + Everlay Protection lets athletes train, play and win on a surface that provides maximum comfort. The combination of Mondoflex and Everlay Protection provides optimal impact absorption and grip for pivoting and sudden changes of direction, making it the perfect solution for handball training and competition. The lack of joints between flooring rolls and the dimensional stability guaranteed by the Everlay sheet ensure uniform energy response. The Mondoflex rubber surface's smooth, non-slip, anti-reflective finish makes the flooring easy to maintain.

## MONDOFLEX: MADE FOR PLAY, MADE TO LAST

The vulcanization process makes the rubber hard and durable, so the flooring maintains its biomechanical properties for years. In addition, rubber surfaces do not require heat sealing during installation, eliminating the need for welding joints, which typically are the first part of a floor to be damaged by wear.

## RUBBER: THE ENVIRONMENT WINS

Mondoflex has passed UL Environmental testing for more than 10,000 volatile chemical agents, and has earned GREENGUARD and GREENGUARD Gold certification. Sports flooring that is certified for low VOC emissions actively contributes to better air quality inside sports facilities, and MONDO works hard to ensure that all of its products protect athletes' health and contribute to their performance during training and competition. Plus, tests conducted in 2013 for the Environmental Product Declaration (EPD) for LCA analysis showed that Mondoflex's environmental impact is 19% lower than PVC flooring products. Mondoflex complies with standards ISO 14040 and ISO 14044, and because it is considered solid urban waste, it can be disposed of in a normal landfill.

## MONDOFLEX 2.5 MM ± EVERLAY PROTECTION

### COLOR RANGE



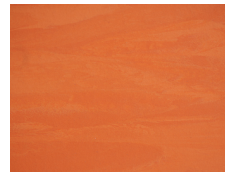
MF61 MAPLE



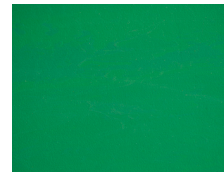
MF21



MF25



MF40



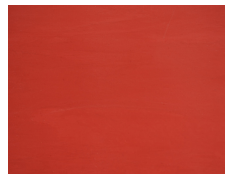
MF10



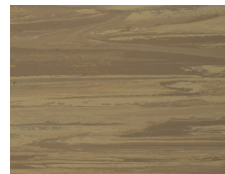
MF18



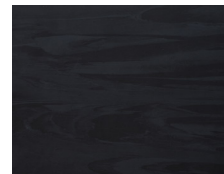
MF33



MF30



MF62



MF90



MF70

### CERTIFICATIONS

FIBA Certificate of Approval for Synthetic Flooring Category, Competition Level 2

---

IHF Certificate of Approval for Synthetic Floorings

---

Mondoflex Greenguard Certification

---

Mondoflex Greenguard Gold Certification

---