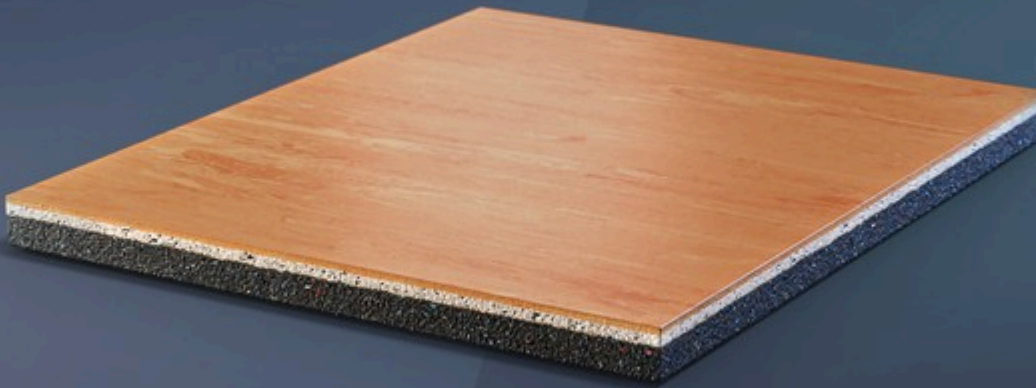


## ADVANCE PRO

TOUGH MEETS COMFORT



### CO-VULCANIZED MULTI-LAYER DUAL DUROMETER

Our sport surfaces are made from two layers of solid rubber vulcanized together to form a continuous, seamless surface.



### AIR-CELL TECHNOLOGY

Air-filled chambers on the bottom layer compress, then expand, acting like bowstrings and projecting athletes up and forward.



### SMOOTH SOLID RUBBER TOP LAYER

The vulcanized rubber top layer has a smooth finish and optimal grip with no need for additional finishes or surface coatings. The surface is durable and highly resistant to wear and tear. Our rubber top layer is available in many different colors, including colors that mimic the look of real hardwood.



## ADVANCE PRO

MONDO offers rubber basketball court flooring solutions that are multi-layered to provide uniform response and good shock absorption and energy return for a more comfortable playing experience. Each layer of our synthetic basketball court flooring is made from vulcanized rubber and has varying degrees of hardness that make it the most durable multipurpose sports flooring option available. The energy return, grip, and stability provided by these floors will allow athletes to perform at their best.

Advance Vulcanized is a multi-layered flooring made of vulcanized rubber. Its three layers have varying degrees of hardness, and the combination makes it hands down the most durable multipurpose flooring around.

Speed, agility and explosive leaping. Volleyball requires a high-end surface capable of supporting high-performance play. That's Advance Vulcanized.

## BETTER GRIP MEANS BETTER PERFORMANCE

The performance layer is made of solid rubber that requires no finishes or surface coatings. It is designed to exceed the toughest friction coefficient standards for high-level play and superior biomechanical performance.

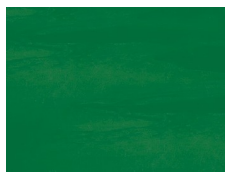
## LESS IMPACT, MORE COMFORT

The underlayer's deformable geometric structure increases the flooring elasticity. This results in optimized foot support, exceptional shock absorption and maximized energy return for superior comfort while playing.

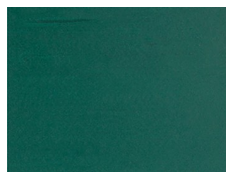
## MAXIMUM SUPPORT FOR HEAVY LOADS

The load disbursement layer enables Advance Vulcanized to withstand heavy loads, such as sports equipment, bleachers, benches and tables.

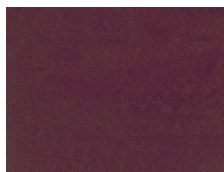
## COLOR RANGE



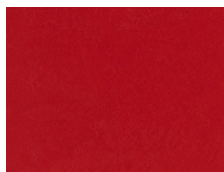
L35



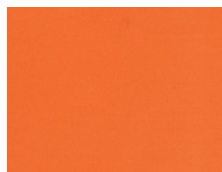
L14



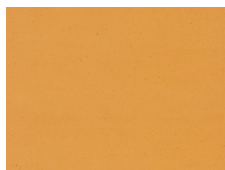
L25



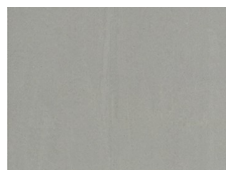
L41



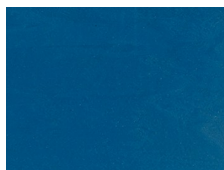
L40



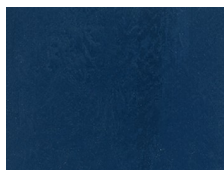
L54



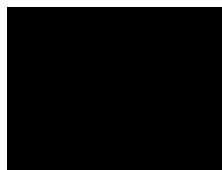
L70



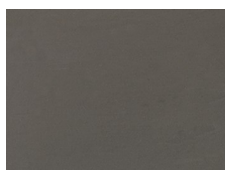
L73



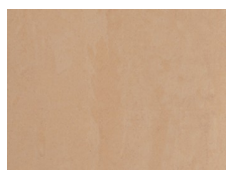
L86



L08



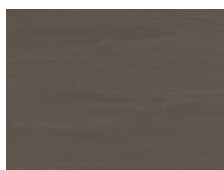
L06



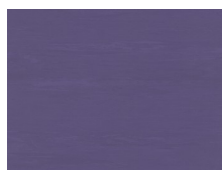
L62



L92



L136



L27