

# ADVANCE VULCANIZED

TOUGH MEETS COMFORT



## UNIÓN DE LAS CAPAS MEDIANTE VULCANIZACIÓN

El producto se compone de dos capas diferentes de caucho macizo unidas entre sí mediante un proceso de vulcanización. El resultado final es un material homogéneo y sin uniones.



## LA TECNOLOGÍA DE LAS CELDAS DE AIRE

Capa inferior diseñada geoméricamente con alveolos llenos de aire para garantizar la absorción de impactos, el almacenamiento de energía y una respuesta motriz inmediata.



## SUPERFICIE DE JUEGO EN CAUCHO LISO

Esta superficie de interior en caucho vulcanizado presenta un acabado liso. Gracias a sus propiedades, el caucho asegura naturalmente el óptimo agarre superficial en condiciones secas, y sin la necesidad de un gofrado.



## ADVANCE VULCANIZED

MONDO offers rubber basketball court flooring solutions that are multi-layered to provide uniform response and good shock absorption and energy return for a more comfortable playing experience. Each layer of our synthetic basketball court flooring is made from vulcanized rubber and has varying degrees of hardness that make it the most durable multipurpose sports flooring option available. The energy return, grip, and stability provided by these floors will allow athletes to perform at their best.

Advance Vulcanized is a multi-layered flooring made of vulcanized rubber. Its three layers have varying degrees of hardness, and the combination makes it hands down the most durable multipurpose flooring around.

Speed, agility and explosive leaping. Volleyball requires a high-end surface capable of supporting high-performance play. That's Advance Vulcanized.

## BETTER GRIP MEANS BETTER PERFORMANCE

The performance layer is made of solid rubber that requires no finishes or surface coatings. It is designed to exceed the toughest friction coefficient standards for high-level play and superior biomechanical performance.

## LESS IMPACT, MORE COMFORT

The underlayer's deformable geometric structure increases the flooring elasticity. This results in optimized foot support, exceptional shock absorption and maximized energy return for superior comfort while playing.

## MAXIMUM SUPPORT FOR HEAVY LOADS

The load disbursement layer enables Advance Vulcanized to withstand heavy loads, such as sports equipment, bleachers, benches and tables.

## INFORMACIONES DE DIMENSIONES

ESPESOR	LONGITUD DEL ROLLO	ANCHO DEL ROLLO
8 mm	42'7" (13 m (Min. 6m, Max. 15 m) )	6'1" (1.86 )
10 mm	42'7" (13 m (Min. 6m, Max. 15 m) )	6'1" (1.86 )

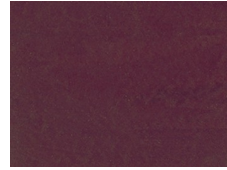
## GAMA DE COLORES



L35



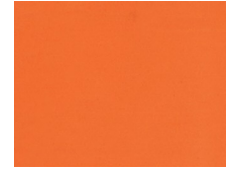
L14



L25



L41



L40



L54



L70



L73



L86



L08



L06



L62



L92