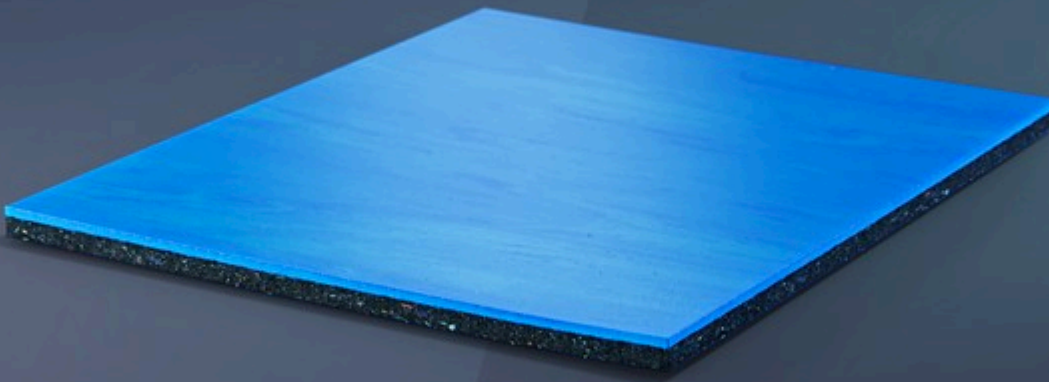


## ADVANCE

THE PERFECT COMBINATION OF VERSATILITY AND PERFORMANCE.



**ADVANCE IS A VERSATILE RUBBER SURFACE DESIGNED FOR MULTIPURPOSE USE. ITS MULTI-LAYERED STRUCTURE MAKES IT IDEAL FOR A VARIETY OF AREAS IN SCHOOLS AND RECREATION CENTERS.**



### CO-VULCANIZED MULTI-LAYER DUAL DUROMETER

Our sport surfaces are made from two layers of solid rubber vulcanized together to form a continuous, seamless surface.



### SMOOTH SOLID RUBBER TOP LAYER

The vulcanized rubber top layer has a smooth finish and optimal grip with no need for additional finishes or surface coatings. The surface is durable and highly resistant to wear and tear. Our rubber top layer is available in many different colors, including colors that mimic the look of real hardwood.

## ADVANCE

Advance guarantees perfect support by uniformly absorbing impacts and optimizing energy return. The features of this surface offer 360 degrees of comfort.

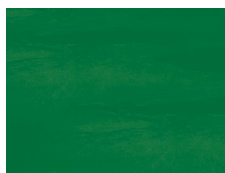
## COMFORTABLE PLUS SOUND ABSORPTION

With the perfect support, optimal energy return and right amount of energy absorption, Advance delivers superior comfort, and its multi-layered construction provides excellent acoustic properties.

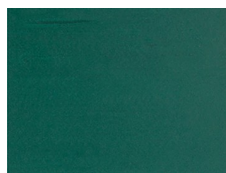
## MAXIMUM SUPPORT FOR HEAVY LOADS

The load disbursement layer enables Advance to withstand heavy loads, such as sports equipment, bleachers, benches and tables.

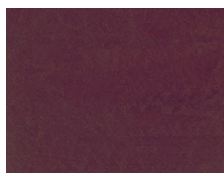
## COLOR RANGE



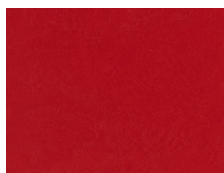
L35



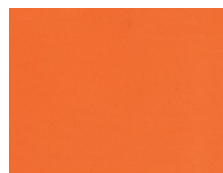
L14



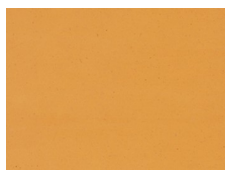
L25



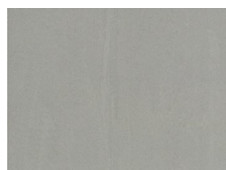
L41



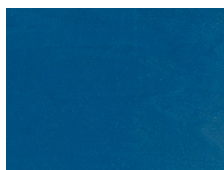
L40



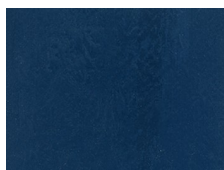
L54



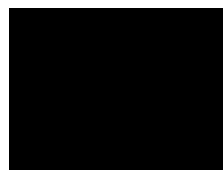
L70



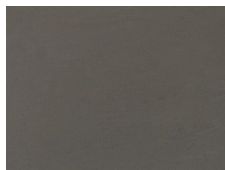
L73



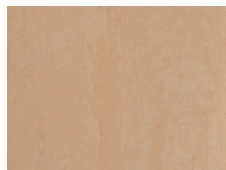
L86



L08



L06



L62



L92



L136



L27