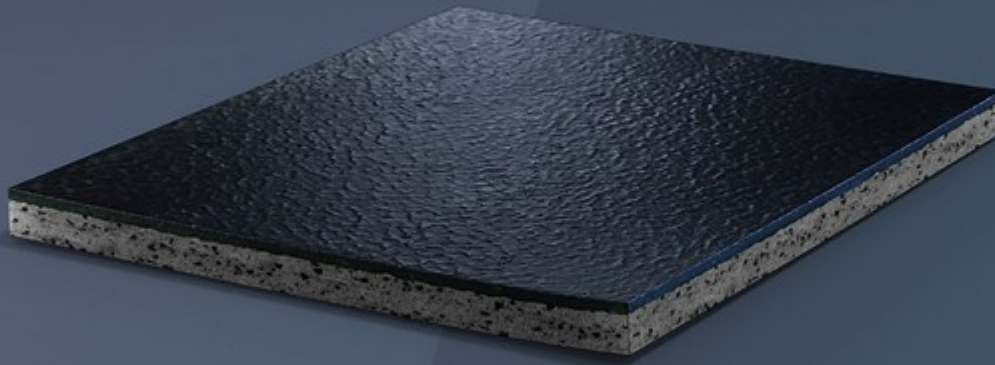


# RAMFLEX

THE BASE FOR GROWING A PASSION.



**RAMFLEX IS A DOUBLE-LAYERED VULCANIZED RUBBER FLOORING WITH A HAMMERED SURFACE FINISH. THE COMBINATION OF TWO LAYERS WITH DIFFERENT DENSITIES ENABLES RAMFLEX TO RESISTS THE WEAR AND THE WEIGHT OF SPORTS EQUIPMENT WHILE PROVIDING OPTIMAL SHOCK ABSORPTION AND ENERGY RETURN.**



#### **CO-VULCANIZED MULTI-LAYER DUAL DUROMETER**

Two different layers of solid rubber with their own formulations, vulcanized together to form a continuous, seamless piece of material.

## RAMFLEX

Hundreds of different exercises are available to those looking to train their bodies. Ramflex is the ideal solution for every type of workout, from freestyle to training with machines.

A hockey arena is more than just ice. The areas around the rink and locker rooms must withstand intense traffic and the constant stress of skate blades. That's why hockey venues need flooring that is solid but still able to absorb loads and impact—like Ramflex.

Ideal for strength and conditioning areas, Ramflex offers enhanced resiliency from dropped weights, heavy machinery, abusive strength and conditioning activities, scratches, scuffs and even sweat.

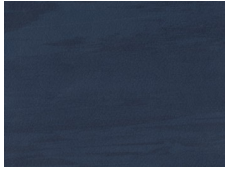
## VERSATILE AND WEAR-RESISTANT

With its double-layered construction, Ramflex flooring offers an optimal combination of resistance and shock absorption. The 2 millimeter-thick rubber surface layer can withstand wear from weights and light abrasions. Its non-porous surface allows for easy maintenance, and because it's anti-slip, it provides the perfect grip for every workout, even when users wear minimal or no footwear. The combination of the surface layer and shock-absorbing underlayer ensures perfect dimensional stability and makes Ramflex perfect for a wide range of uses.

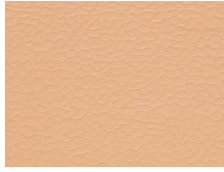
## DIMENSIONS

THICKNESSLENGTH		WIDTH	WEIGHT	TILE SIZE
6 mm	42'7" (Min. 19'8", Max. 55'9") (13 m)	6' (186 cm)	1.89 lbs/sq.ft. (8.00 kg/m <sup>2</sup> )	36" x 36" (91.35 x 91.35 cm)
10 mm	29'6" (Min. 19'8", Max. 36'1") (9 m)	6' (186 cm)	3.2 lbs/sq.ft. (13,5 kg/m <sup>2</sup> )	36" x 36" (91,35 x 91,35 cm)
12 mm	22'11" [min. 19'8"; max. 36'1"] (7 m min. 6 m; max. 11 m)	6'1" (1.86 cm)	2.66 lb lbs/sq.ft. (13.0 kg kg/m <sup>2</sup> )	36" x 36" (91.35 cm x 91.35 cm)
18 mm	m	cm	kg/m <sup>2</sup>	cm

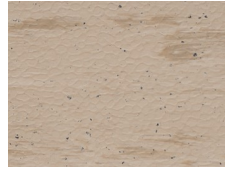
## COLOR RANGE



986



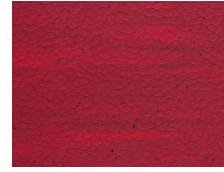
920



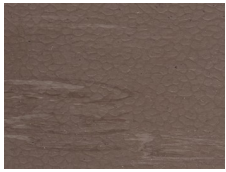
712



710



741



715



790



707

## CERTIFICATIONS

Ramflex Greenguard Certification

---

Ramflex Greenguard Gold Certification

---