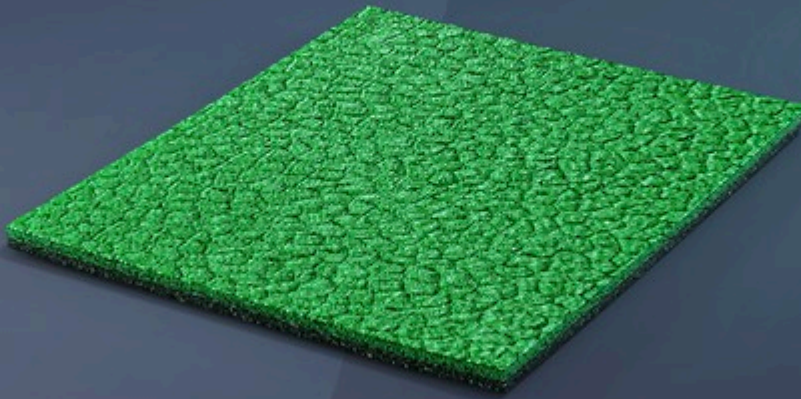


## SPORTFLEX M

NO MATTER THE GOAL, IT CAN EASILY BE REACHED.



**SPORTFLEX M IS A VULCANIZED RUBBER SPORTS FLOORING WHICH IS IDEAL FOR MULTIPURPOSE INSTALLATIONS, BOTH INDOORS AND OUTDOORS. IT IS COMPOSED OF TWO DIFFERENT LAYERS THAT ARE VULCANIZED TOGETHER IN ORDER TO FORM A SINGLE PRODUCT, WITH BIOMECHANICAL AND PHYSICAL CHARACTERISTICS THAT REMAIN CONSTANT ACROSS THE ENTIRE SURFACE.**

**CONTAINS AT LEAST 20% RECYCLED RUBBER AND MORE THAN 6% MATERIALS FROM RAPIDLY RENEWABLE SOURCES.**



### **EMBOSSED SOLID-RUBBER TOP LAYER**

Vulcanized rubber surface layer with raised embossing for optimal elasticity and grip, and efficient drainage.



### **CO-VULCANIZED MULTI-LAYER DUAL DUROMETER**

Our sport surfaces are made from two layers of solid rubber vulcanized together to form a continuous, seamless surface.



### **2-PHASE VULCANIZATION**

The vulcanized top layer integrates a three-dimensional network of pre-vulcanized rubber granules to optimize the surface's performance.



## SPORTFLEX M

For freestyle training, athletes need a surface that ensures uniform energy return and correctly supports the ligaments during continuous rotating movements. Due to its two vulcanized layers, Sportflex M guarantees the perfect mix of shock absorption and friction coefficient. In addition, its unique texture ensures efficient rainwater drainage, making the surface ideal for outdoor applications.

Whether athletes run for fun or for training, they deserve a surface that provides ideal support so they can run faster, jump higher and score safely. That's why we developed the top layer of Sportflex M with a friction coefficient that minimizes the risk of ankle and knee injuries, and a bottom layer that maximizes shock resistance and energy return.

Tennis is all about quick reactions and continuous movement and because it can be played on such a wide variety of surfaces, players need to adapt not only to their opponents, but also to the court. Sportflex M addresses both these issues with uniform energy return and consistent ball bounce on the entire surface of play. Plus, it optimizes player comfort and safety with the ideal friction coefficient for all rotation movements-an advantage because sometimes a backhand is the difference in a match.

Whether for training or recreational purposes, basketball needs a safe surface that supports you when you rapidly change direction and speed and cushions impact when you jump. It needs a comfortable surface that gives you full control of the ball at all times.

That is why Sportflex M's surface layer has a friction coefficient designed to reduce the risk of injuring ankles and knees to a minimum and a bottom layer that provides uniform cushioning and responsiveness. An ideal solution for indoor and outdoor basketball courts.

## A MULTISPORTS SURFACE

The top layer of Sportflex M is designed to provide the best possible combination of slip resistance, rotational friction, comfort and safety, making it suitable for a wide range of different sports - basketball, handball, volleyball, five-a-side football and tennis.

The formulation of the top layer of Sportflex M integrates pre-vulcanized rubber granules of the same color as the surface, which ensure the uniformity of the dynamic response across the entire court and make it ideal for intensive use.

The surface texture ensures good ball bounce, and in outdoor applications, it also enables efficient rainwater drainage.

The lower layer of Sportflex M is characterized by a geometric construction, which ensures excellent absorption of shocks and vibrations and the return of energy during all phases of the game.

## NATURALLY ANTIBACTERIAL

The surface layer of Sportflex M has superb natural antibacterial properties, without the addition of biocides to the product: in the tests performed in accordance with ISO 22196, the kill-rate of inoculated bacteria exceeds 99.999% in 24 hours, with an antimicrobial activity factor, or "R", of more than 5.

## FAST, EVEN FOR CLEANING

Since Sportflex M doesn't have a loose granular surface, it is easy to clean without compromising traction. Its innovative formula enables Sportflex M to resist alterations caused by atmospheric agents and provides superior protection against climatic variations and extreme weather conditions. Sportflex M is a pre-manufactured product, which means that portions of the material can be replaced as needed with perfect results.

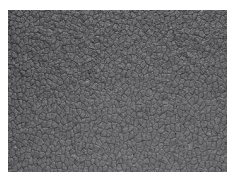
## DIMENSIONS

THICKNESS	WEIGHT	LENGTH	WIDTH
6 mm	6,4 kg/m <sup>2</sup>	6÷16 m	183 cm
8 mm	8,7 kg/m <sup>2</sup>	6÷16 m	183 cm
11 mm	10,5 kg/m <sup>2</sup>	6÷16 m	183 cm

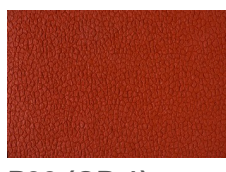
## I / VERSION

THICKNESS	WEIGHT	LENGTH	WIDTH
6 mm	6,4 kg/m <sup>2</sup>	6÷16 m	183 cm
8 mm	8,7 kg/m <sup>2</sup>	6÷16 m	183 cm
11 mm	10,5 kg/m <sup>2</sup>	6÷16 m	183 cm

## COLOR RANGE



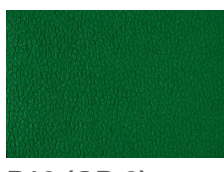
P06 (GR.2)



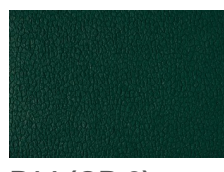
P30 (GR.1)



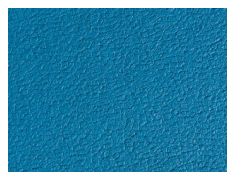
P58 (GR.2)



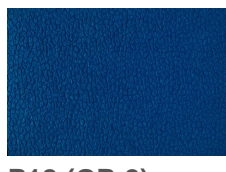
P10 (GR.2)



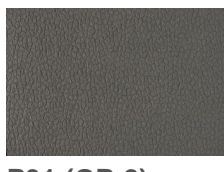
P14 (GR.2)



P85 (GR.2)



P18 (GR.2)



P31 (GR.2)



## CERTIFICATIONS

FIBA Certificate of Approval 3x3 Equipment for synthetic Flooring

---

ITF COURT PACE CLASSIFICATION CATEGORY 3 MEDIUM

---

Sportflex M Greenguard Gold Certification

---

Sportflex M I Greenguard Certification

---

Sportflex M I Greenguard Gold Certification

---

Sportflex M Greenguard Certification

---