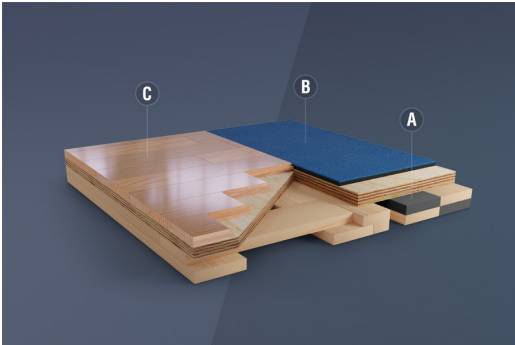


PLATAFORMAS DE LEVANTAMIENTO DE PESAS

Whether you want to do Deadlifting or Olympic lifting, our high-performance platforms will deliver the comfort and safety you expect from MONDO's product line.



- A. High Impact Foam
- B. 10 mm Sport Impact
- C. 15 mm Engineered Red Oak

CREATE THE BEST SPACE FOR YOUR STRENGTH & CONDITIONING AREA

This **completely customizable platform system** allows you to create the best strength and conditioning space to fit your team's needs. With the use of interlocking panel inserts that can be incorporated between lifting stations, you have the capability of adding panels in any direction. This allows you unlimited possibilities to create a unique weight lifting space. Whether you desire a single lifting platform, or a uniform multi-platform lifting surface on one level, you have the ability to create an area specifically designed for your sports teams and recreational athletes.

DESIGN AN ATTENTION-GETTING LOOK TO YOUR CUSTOMIZABLE DEADLIFT PLATFORM

In partnership with Praters, **our design capabilities are endless**. With the option of painting or applying high performance patented PlayOn decals, we can provide design options that will take your branding to the next level. Combining your school or facility logo with MONDO's array of drop zone colors will generate an unforgettable wow factor that will leave a lasting impression on your athletes and future recruits.



If you are ready to take your lifting experience to the next level, or are interested in how we can help transform your strength and conditioning room to meet and exceed the needs of your facility and athletes, [Contact MONDO](#) to learn more about the MondoLIFT PRO Platform System.

RAMFLEX

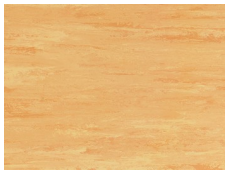
ESPESOR LONGITUD

ANCHURA PESO

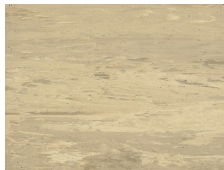
DIMENSIONES DE LAS LOSETAS

10 mm 29'6" (Min. 19'8", Max. 36'1") (9 m) 6' (186 cm) 3.2 lbs/sq.ft. (13.5 kg/m²) 36" x 36" (91.35 x 91.35 cm)

GAMA DE COLORES



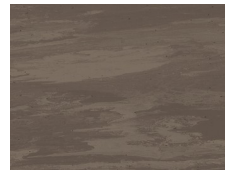
G920



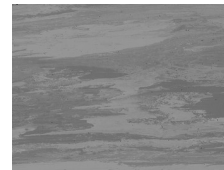
G712



G741



G715



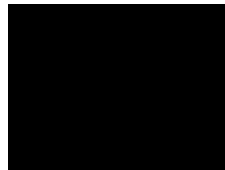
G707



G710



G986



G790

SPORT IMPACT

ESPESOR LONGITUD

ANCHURA PESO

DIMENSIONES DE LAS LOSETAS

10 mm 29'6" (Min. 19'8", Max. 36'1") (9 m) 6' (186 cm) 2.9 lbs/sq.ft. (14,2 kg/m²) 3' x 3' (91,35 x 91,35 cm)

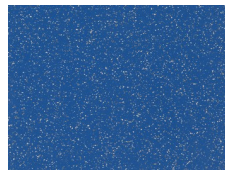
GAMA DE COLORES



S136



S154



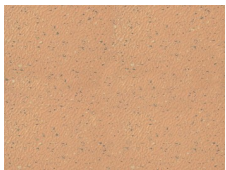
S110



S141



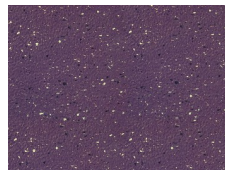
S114



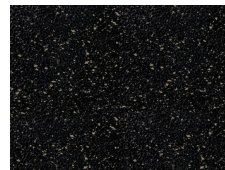
S062



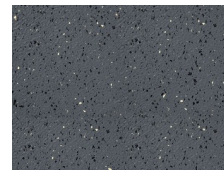
S055



S026



S008



S018



S011



S073

MONDOLIFT PRO

ESPESOR LONGITUD

PESO

ANCHURA

88 mm 6' (72") (1.8 m) 256# (116.12 kg) 7' 7 1/4" (91.25" includes drop zones) (2.3 m)