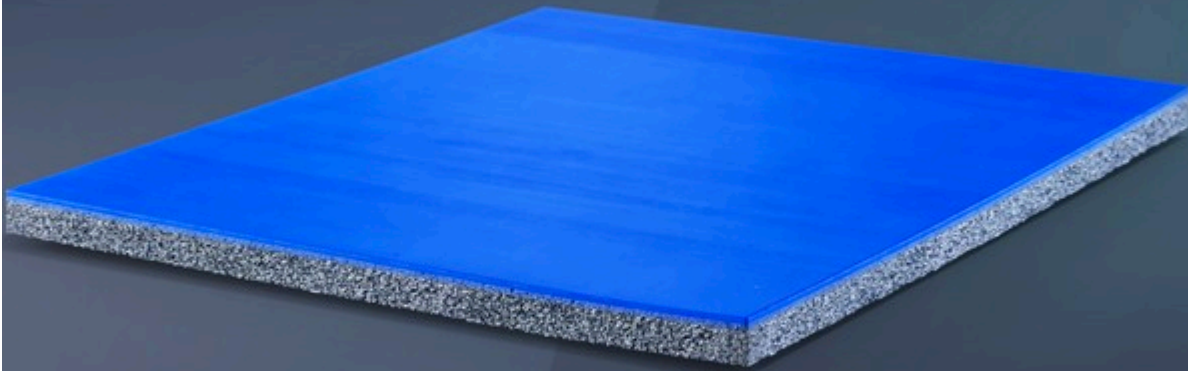


MONDOFLEX II

KEEPING A GRIP ON VICTORY.



MONDOFLEX II IS A POINT-ELASTIC SPORTS FLOORING WITH SHOCK ABSORPTION VALUES ABOVE 25% (CATEGORY P1 ACCORDING TO REGULATION EN 14904). THE FLOORING COMPRISES TWO LAYERS OF NATURAL AND SYNTHETIC RUBBER THAT ARE JOINED IN THE PRODUCTION PHASE TO A SUPPORTING UNDERLAYMENT OF ELASTIC FOAM. PRE-FABRICATION GUARANTEES THAT THE PRODUCT IS UNIFORM WHEN INSTALLED AND ENSURES A CONSTANT BIOMECHANICAL RESPONSE ACROSS THE ENTIRE SURFACE.



SMOOTH SOLID RUBBER TOP LAYER

The vulcanized rubber top layer has a smooth finish and optimal grip with no need for additional finishes or surface coatings. The surface is durable and highly resistant to wear and tear. Our rubber top layer is available in many different colors, including colors that mimic the look of real hardwood.



MULTILAYER CONCEPT

The system is assembled by arranging layers of varying composition and elasticity on-site. Thanks to the combination of elastic under layer and surface finish, the system is able to respond specifically to the requirements of each sport, even in the event of intensive use and in multipurpose facilities.



MONDOFLEX II

An optimal grip supports fast, dynamic movement. Uniform energy absorption helps athletes make powerful, explosive moves.

In amateur volleyball, teams train for hours to improve their play. This puts the flooring under continuous stress. Mondoflex II is the most suitable system for this type of intense use. Its smooth rubber surface is durable and helps athletes prepare for future competitions. Furthermore, its elastic substrate enables it to absorb impact, making it ideal for multi-sport facilities. Because good fun can't be stopped.

UNIFORM SHOCK ABSORPTION AND ENERGY RETURN

Correct load distribution, uniform energy return, and sport impact absorption: These are the fundamental characteristics of Mondoflex II, due to three layers of varying hardness and density that are joined during production to form one continuous, seamless piece of material. The Mondoflex surface layer, with its smooth, anti-slip, anti-reflective finish, guarantees a perfect grip for pivoting and rapid changes of direction. The supporting elastic foam underlayer makes Mondoflex II an ideal surface for multi-sport facilities because it ensures a uniform shock-absorption level of more than 25%.

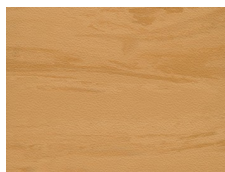
CONSISTENT BIOMECHANICS OVER TIME

The vulcanization process gives the flooring tensile strength, tear resistance, and durability, slowing the curing process that's typical of other synthetic materials. That's how the Mondoflex II rubber surface layer protects the supporting elastic foam underlayer, ensuring the product's biomechanical properties won't change over time. In addition, Mondoflex II can be installed without heat welding. This eliminates heat-welded joints, which are typically the first elements damaged by wear.

COMMITMENT TO THE ENVIRONMENT

Sports flooring with low VOC emissions actively contributes to the air quality of the facility it's in—and MONDO is committed to developing products that contribute to better air quality, protect athletes' health and safety, and improve athletic performance during both training and competition. Mondoflex II passed the UL Environment Tests for more than 10,000 volatile chemical agents, attaining GREENGUARD and GREENGUARD Gold certifications. In addition, tests conducted in 2013 for Environmental Product Declaration shows that Mondoflex II creates 19% less impact on the environment than PVC flooring. By conforming to regulations ISO 14040 and ISO 14044, Mondoflex II is considered solid urban waste, meaning it can be easily disposed in normal landfills.

COLOR RANGE



MF61 MAPLE



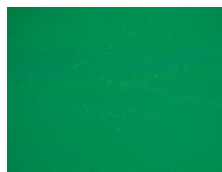
MF21



MF25



MF40



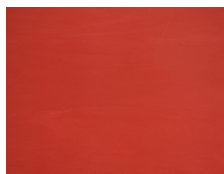
MF10



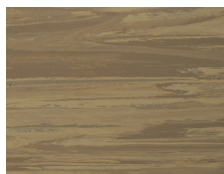
MF18



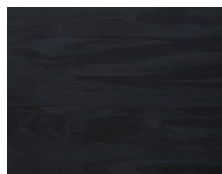
MF33



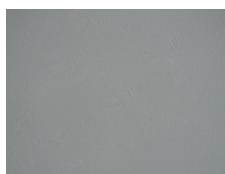
MF30



MF62



MF90



MF70

CERTIFICATIONS

Mondoflex II Greenguard Certification

Mondoflex II Greenguard Gold Certification