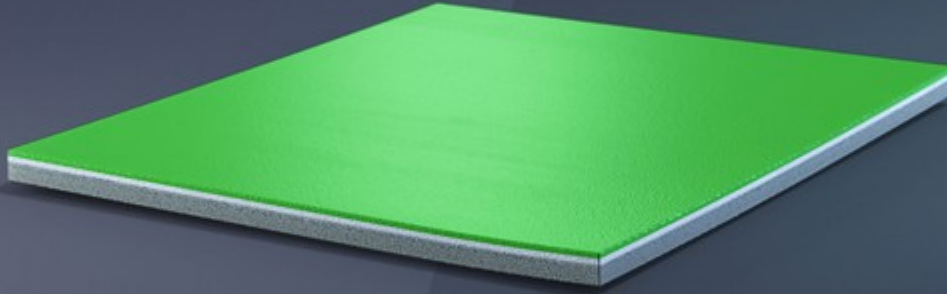


VINYLSPORT PERFORMANCE

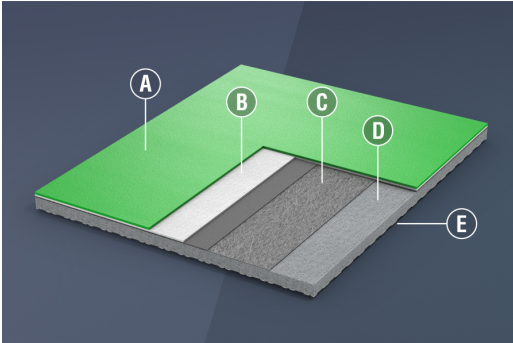
SUPPORTING EVERY SPIKE, BLOCK AND ATTACK.



VINYLSPORT PERFORMANCE IS A PRE-FABRICATED SPORTS FLOORING DELIVERED IN ROLLS. IT HAS SHOCK-ABSORPTION VALUES GREATER THAN 25% (CATEGORY P1 ACCORDING TO REGULATION EN14904) AND IS DESIGNED FOR EASY INSTALLATION.

With all of the leaping, lunging and diving in volleyball, competitors need a floor that provides superior shock absorption, enabling them to go all-out without fear of injury.

MULTILAYER STRUCTURE



- A. High density wear resistant vinyl layer
- B. High density compression resistant vinyl layer
- C. Glass Fiber mesh
- D. Medium density foam layer
- E. Anti-slip backing with peduncles

SECURITY UNDERFOOT

Due to a supporting underlayer made of polyurethane foam, Vinylsport Performance guarantees shock absorption greater than 25%, and it can be installed as a loose-laid solution with adhesive tape and weld rods. The embossed, opaque, non-slip finish makes this flooring ideal for all levels of volleyball play. And MONDO offers a wide range of flooring colors, including the FIVB's official colors.

THE ULTIMATE VOLLEYBALL SYSTEM

Designed for volleyball, Vinylsport Performance is a loose-laid flooring system with a PVC finish. The surface pattern ensures the ideal friction coefficient for players' every movement, as well as minimal abrasiveness for diving and spiking. Vinylsport Performance may be installed with adhesive tape and weld rods, so it doesn't need to be glued to the slab below, which maintains the court's dimensional stability.

DIMENSIONS

THICKNESS

7 mm

LENGTH

20 m

WIDTH

195 cm

WEIGHT

4,25 kg/m²

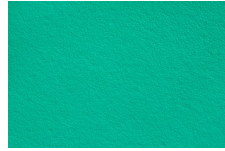
COLOR RANGE



S18



S14



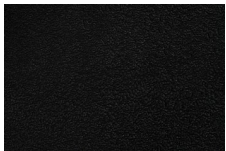
S23



S41



S70



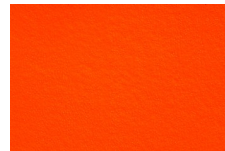
S90



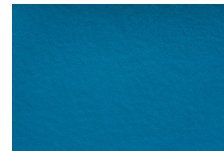
S32



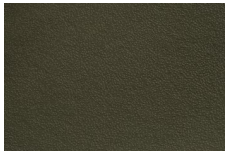
S81



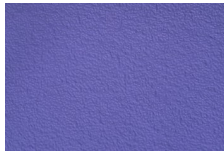
S42



S26



S71



S80

CERTIFICATIONS

FIBA Certificate of Approval for Synthetic Flooring Category, Level 2 and 3

BWF Synthetic Flooring Certificate

IHF 2019 Certificate of Approval for Synthetic Floorings
